

VERMONT

JUDICIARY



STATISTICAL SUMMARY

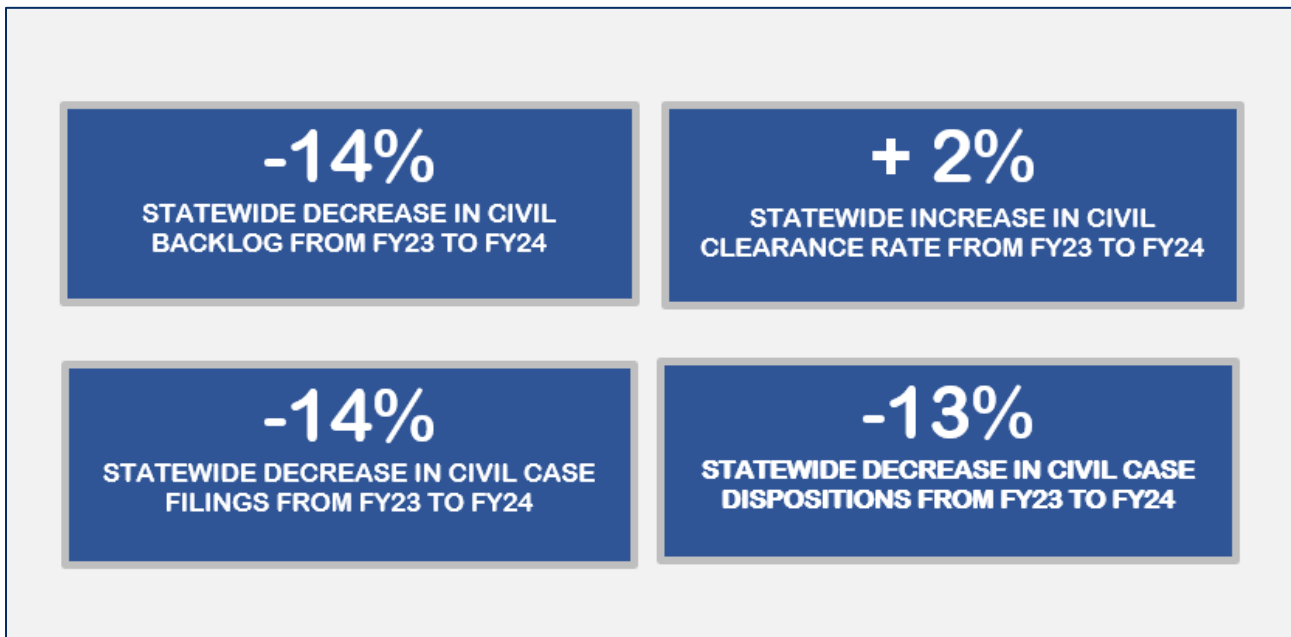
FY 2024

TABLE OF CONTENTS

FY24 SUMMARY OF CASELOAD BY DIVISION: STATEWIDE	
CIVIL	2
CRIMINAL	3
FAMILY	4
PROBATE	5
ENVIRONMENTAL	6
JUDUCIAL BUREAU	6
HIGHLIGHTS INCOMING CASES	7
FY24 INCOMING CASES: NEW FILINGS, REOPENED AND REACTIVATED	8
HIGHLIGHTS OUTGOING CASES	9
FY24 OUTGOING CASES: JUDGMENTS, REOPENED, AND INACTIVE DISPOSITIONS	10
FY24 OUTGOING CASES: METHOD OF DISPOSITION	11
FY24 OUTGOING CASES: TIME TO DISPOSITION	
CIVIL	12
CRIMINAL	13
FAMILY	14
PROBATE	15
ENVIRONMENTAL	16
JUDICIAL BUREAU	16
APPENDIX I: INCOMING CASES BY DIVISION	17
APPENDIX II: OUTGOING CASES BY DIVISION	22
APPENDIX III: FY24 SUMMARY OF CASELOAD BY UNIT	27
APPENDIX IV: CASE TYPES AND DISPOSITION GROUPS	83
APPENDIX V: DISPOSITIONAL GUIDELINES	88

FY24 SUMMARY OF CASELOAD BY DIVISION: STATEWIDE

Civil Division	Incoming	Outgoing	Pending End of Year Active	Clearance Rate
Appeal	182	165	97	91%
Claim Against Government	28	27	28	96%
Collection	1082	1095	437	101%
Contract	191	203	200	106%
Declaratory Relief	70	73	76	104%
Employment	19	18	35	95%
Foreclosure	495	494	486	100%
Landlord/Tenant	1870	1999	680	107%
Abandoned Property	23	19	8	83%
Eviction	1818	1950	650	107%
Other	29	30	20	103%
Miscellaneous Civil	228	320	131	140%
Prisoner	500	557	305	111%
Real Property	52	51	68	98%
Small Claims	2116	2407	986	114%
Stalking	1317	1313	103	100%
Sexual Assault	20	20	3	100%
Sexual Assault on behalf of Minor	10	9	3	90%
Stalking	1188	1181	94	99%
Stalking on behalf of Minor	99	103	3	104%
Tort	360	448	527	124%
Total	8510	9170	4157	108%



Criminal Division	Incoming	Outgoing	Pending End of Year Active	Clearance Rate
Civil Miscellaneous	406	389	326	96%
Civil Suspension	930	1136	518	122%
Felony	6188	6629	4290	107%
Domestic Violence	868	929	495	107%
Drugs	716	820	429	115%
Elder Abuse	0	0	1	
Motor Vehicle-DWI/DUI	331	382	210	115%
Motor Vehicle-Other	481	466	268	97%
Other	16	19	5	119%
Person	1379	1490	1324	108%
Property	1974	2040	1254	103%
Protection Order Violation	56	89	41	159%
Public Order	354	378	254	107%
Weapons	13	16	9	123%
Fish and Game	144	169	178	117%
Judicial Bureau Appeal	36	49	22	136%
Miscellaneous (Criminal)	1	1	460	100%
Misdemeanor	16720	18191	9591	109%
Domestic Violence	760	890	499	117%
Drugs	895	882	485	99%
Elder Abuse	0	2	0	
Motor Vehicle-DWI/DUI	2187	2546	1256	116%
Motor Vehicle-Other	3222	3553	1670	110%
Other	74	93	8	126%
Person	1361	1499	857	110%
Property	4478	4441	2331	99%
Protection Order Violation	393	468	275	119%
Public Order	3332	3788	2200	114%
Weapons	18	29	10	161%
Uniform Fire Prevention Ticket	0	0	0	
Total	24425	26564	15385	109%
Investigative Requests	3019	3140	111	104%

-12%

STATEWIDE DECREASE IN CRIMINAL BACKLOG FROM FY23 TO FY24

+ 3%

STATEWIDE INCREASE IN CRIMINAL CLEARANCE RATE FROM FY23 TO FY24

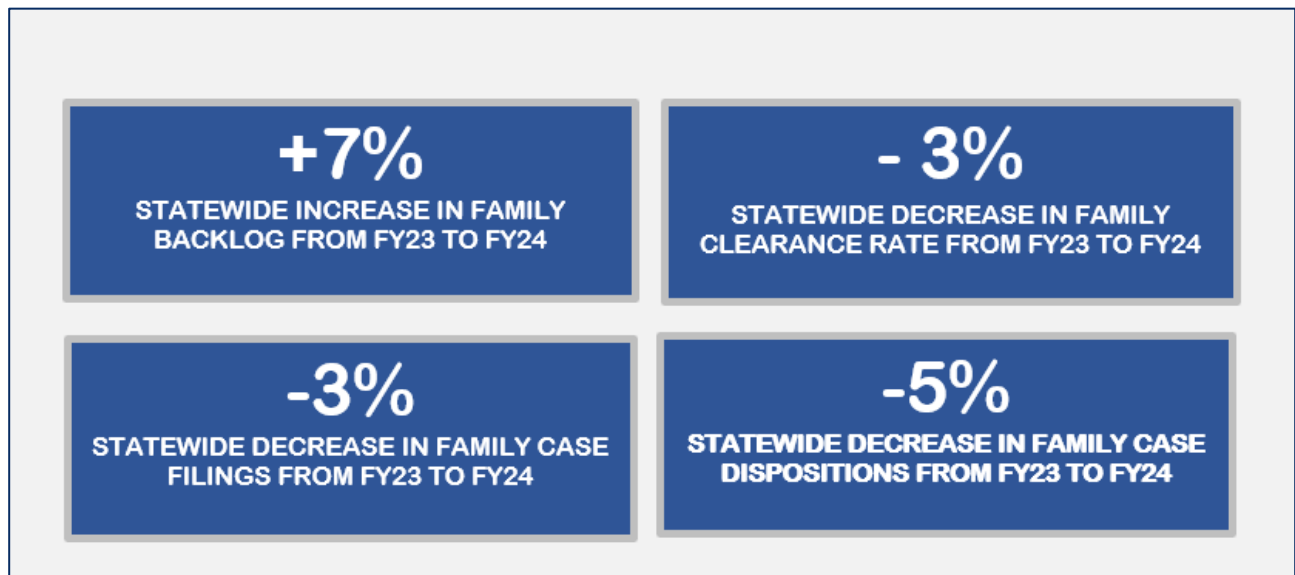
+8%

STATEWIDE INCREASE IN CRIMINAL CASE FILINGS FROM FY23 TO FY24

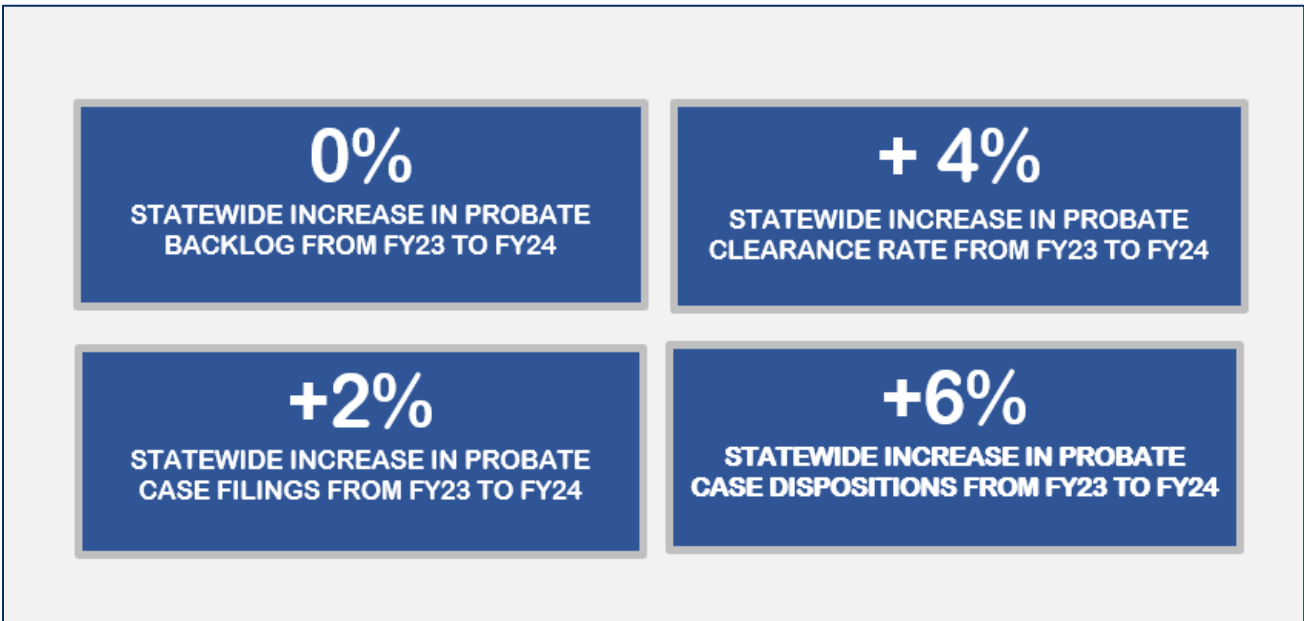
+5%

STATEWIDE INCREASE IN CRIMINAL CASE DISPOSITIONS FROM FY23 TO FY24

Family Division	Incoming	Outgoing	Pending End of Year Active	Clearance Rate
Annulment	0	1	0	
Desertion	0	0	0	
Dissolution with Children	865	751	874	87%
Dissolution without Children	1083	1077	547	99%
Juvenile	1622	1766	1158	109%
CHINS A- Abandoned or Abused	44	60	32	
CHINS B- Neglect	404	479	297	119%
CHINS C- Beyond Control	50	51	24	102%
CHINS D- Truant	132	150	83	114%
Delinquency	712	737	522	104%
Vulnerable Noncitizen Child	3	2	1	67%
Youthful Offender	277	287	199	104%
Mental Health	1114	1083	94	97%
Continued Treatment	195	179	34	92%
Involuntary Medication	78	76	4	97%
Involuntary Treatment	577	566	53	98%
Warrant for Emergency Exam	264	262	3	99%
Misc. Family	63	64	30	102%
Parentage	801	770	710	96%
Protection Order	3577	3405	371	95%
Extreme Risk Protection Order	36	35	4	
Registration of Foreign Abuse Prevention	1	0	1	0%
Relief from Abuse	3054	2913	300	95%
Relief from Abuse on behalf of a Minor	406	379	57	93%
Relief from Abuse /Neglect/ Exploitation	80	78	9	98%
Registration of Foreign Order	32	30	26	94%
Separation	0	0	0	
UIFSA	95	57	80	60%
Total	9252	9004	3890	97%



Probate Division	Incoming	Outgoing	Pending End of Year Active	Clearance Rate
Adoption	360	344	135	96%
Adult	59	57	16	97%
Conversion	0	1	2	
Minor- Agency	237	208	49	88%
Minor- Private	59	76	64	129%
Surrender & Relinquishment	5	2	4	40%
Estate	2559	2618	5965	102%
Guardianship Adult	462	434	324	94%
Involuntary	359	342	255	95%
Voluntary	103	92	69	89%
Guardianship Minor	350	342	426	98%
Custodial	233	252	290	108%
Financial	75	62	81	83%
Permanent	35	22	53	63%
Vulnerable Noncitizen Child	7	6	2	86%
Misc. Probate	39	33	29	85%
Trust	45	41	228	91%
Total	3815	3812	7107	100%
Administrative Matters	4307	4278	383	99%



Environmental Division	Incoming	Outgoing	Pending End of Year Active	Clearance Rate
Act 250 and ANR De Novo Appeals	17	24	22	141%
ANR & NRB Enforcement	21	18	8	86%
Civil Citation	10	12	0	120%
Miscellaneous (Environmental)	2	4	0	200%
Municipal De Novo Appeal	53	71	46	134%
Municipal Enforcement	28	26	19	93%
On the Record Appeal	8	9	5	113%
Total	139	164	100	118%

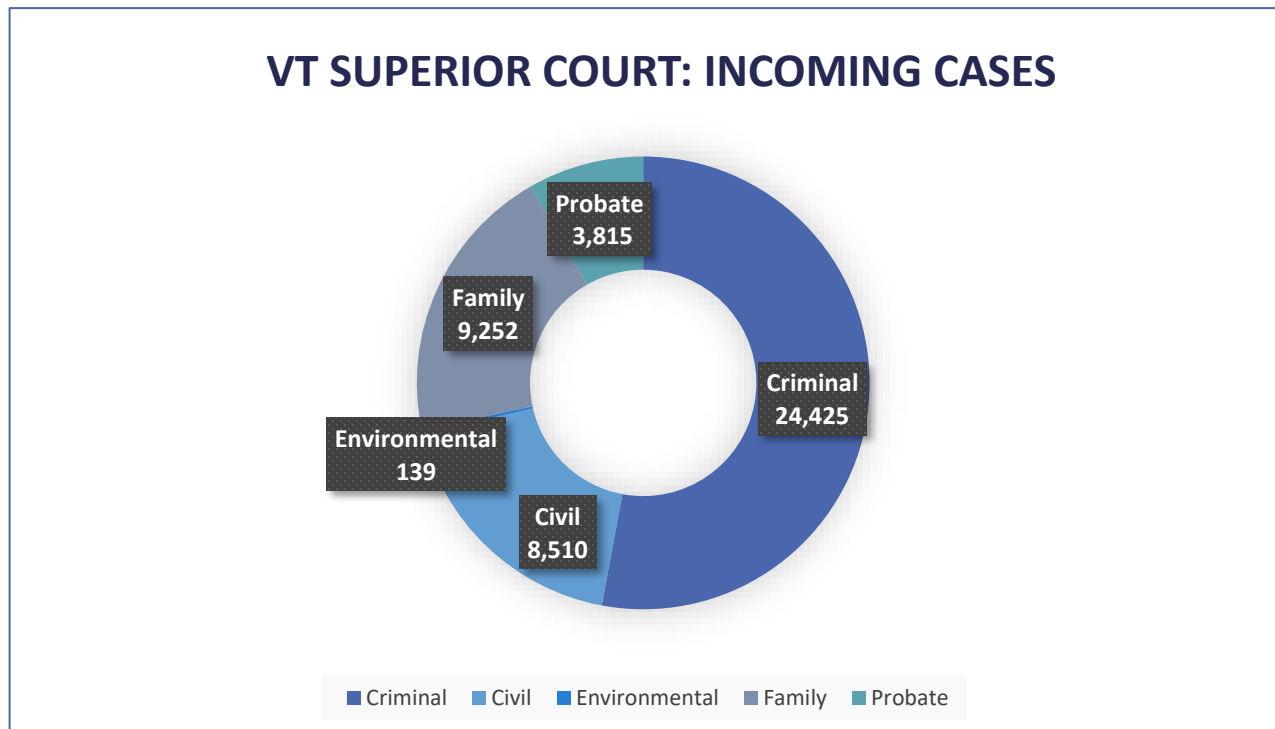
<p>-20%</p> <p>STATEWIDE DECREASE IN ENVIRONMENTAL BACKLOG FROM FY23 TO FY24</p>	<p>+22%</p> <p>STATEWIDE INCREASE IN ENVIRONMENTAL CLEARANCE RATE FROM FY23 TO FY24</p>
<p>+5%</p> <p>STATEWIDE INCREASE IN ENVIRONMENTAL CASE FILINGS FROM FY23 TO FY24</p>	<p>+5%</p> <p>STATEWIDE INCREASE IN ENVIRONMENTAL CASE DISPOSITIONS FROM FY23 TO FY24</p>

Judicial Bureau	Incoming	Outgoing	Pending End of Year Active	Clearance Rate
Fish and Wildlife	277	280	28	101%
Municipal Complaint	878	923	69	105%
Vermont Civil Violation	41,808	41,167	5,526	98%
Total	42,963	42,370	5,623	99%

<p>+12%</p> <p>STATEWIDE INCREASE IN JUDICIAL BUREAU BACKLOG FROM FY23 TO FY24</p>	<p>0%</p> <p>STATEWIDE INCREASE IN JUDICIAL BUREAU CLEARANCE RATE FROM FY23 TO FY24</p>
<p>+3%</p> <p>STATEWIDE INCREASE IN JUDICIAL BUREAU CASE FILINGS FROM FY23 TO FY24</p>	<p>+3%</p> <p>STATEWIDE INCREASE IN JUDICIAL BUREAU DISPOSITIONS FROM FY23 TO FY24</p>

Highlights: Incoming Cases

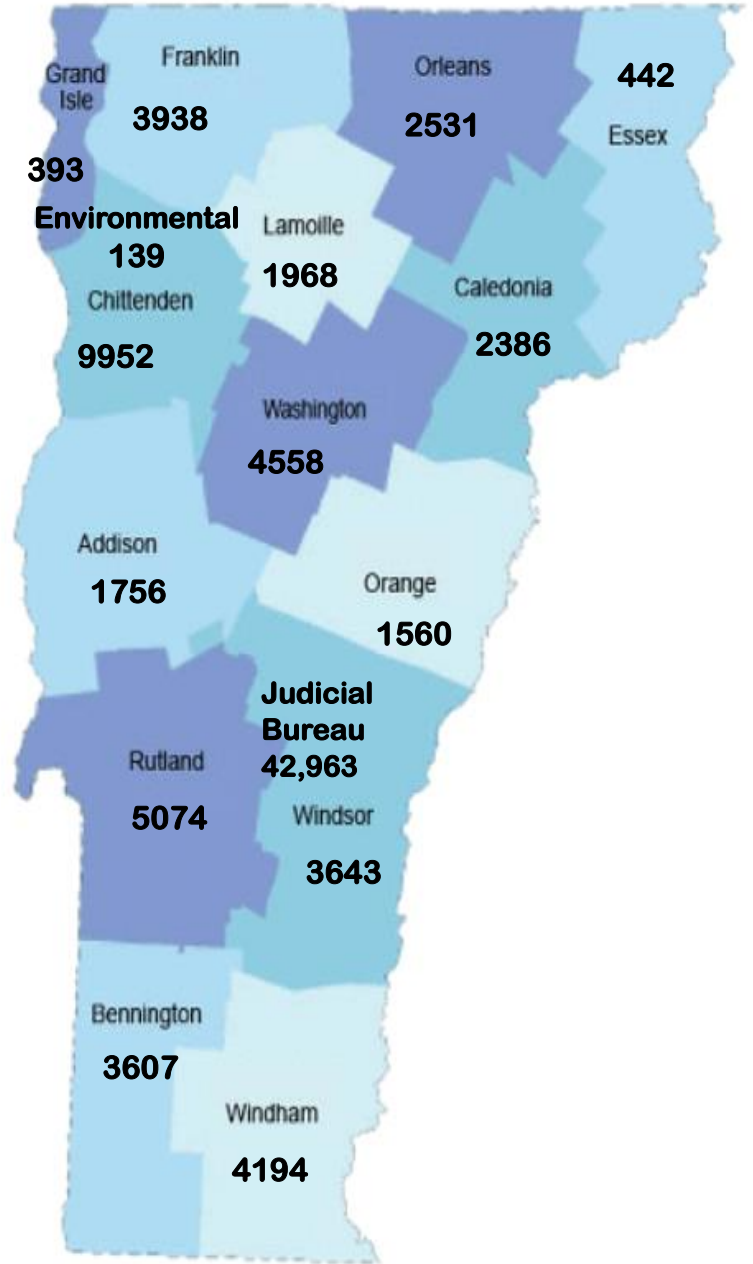
- There were 46,141 incoming cases in the Vermont Superior Court (criminal, civil, family, probate, and environmental divisions) in FY24. This includes new filings, reopened cases, and reactivated cases.¹ This represents a 1% decrease from the previous year.
- In addition:
 - 3019 investigative requests were filed in the criminal division, a 11% increase from the previous year.
 - 4307 administrative matters were filed in the probate division, a 6% increase from the previous year.
 - 42,963 cases were filed in the Judicial Bureau, a 3% increase from the previous year.



¹ A reopened case is a previously adjudicated case that has been reopened and is now active. A reactivated case is one which was never adjudicated but was placed on inactive status and has since been restored to the court's control.

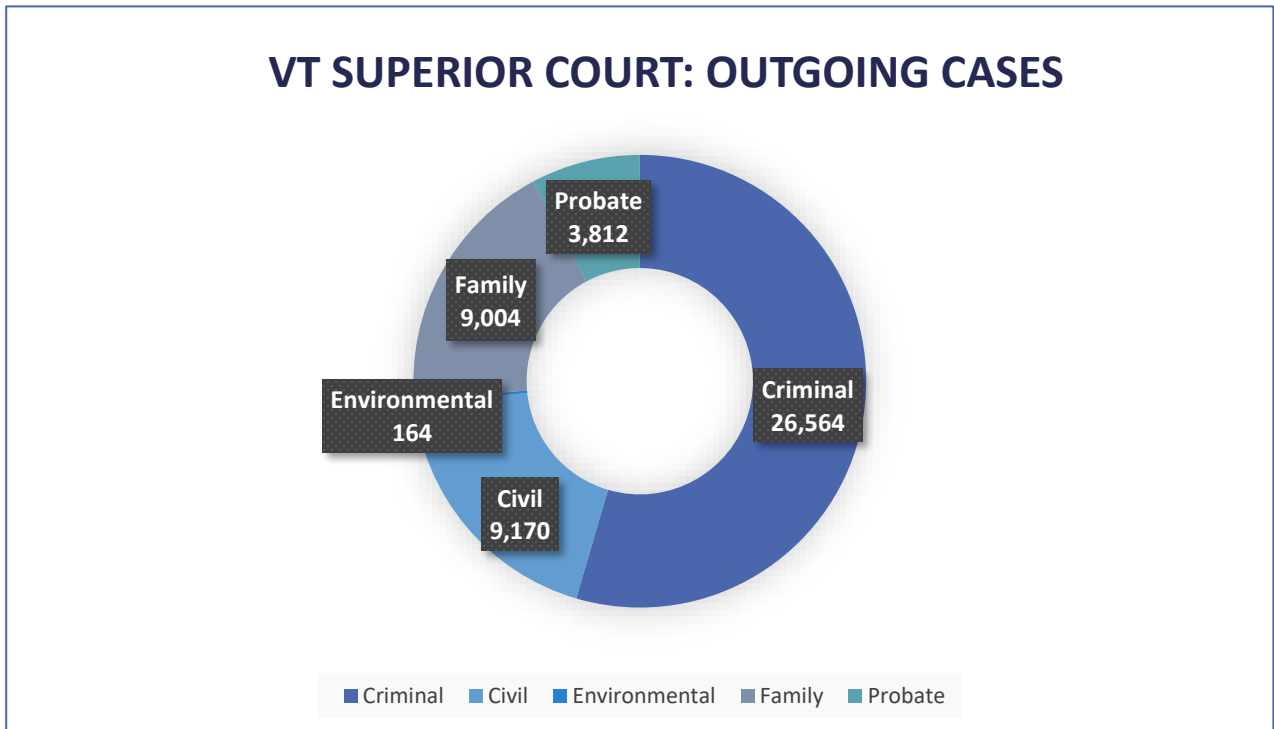
FY24 INCOMING CASES: NEW FILINGS, REOPENED AND REACTIVATED

Incoming Cases					
By Division					
	Criminal	Civil	Family	Probate	Total
Addison	758	350	426	222	1756
Bennington	2013	569	732	293	3607
Caledonia	1278	409	469	230	2386
Chittenden	5547	1925	1784	696	9952
Essex	222	91	80	49	442
Franklin	2125	730	794	289	3938
Grand Isle	141	107	97	48	393
Lamoille	1155	301	379	133	1968
Orange	732	325	362	141	1560
Orleans	1359	473	499	200	2531
Rutland	2492	942	1152	488	5074
Washington	2552	782	905	319	4558
Windham	2257	663	956	318	4194
Windsor	1794	843	617	389	3643
Environmental		139			139
					46141
Judicial Bureau		42963			



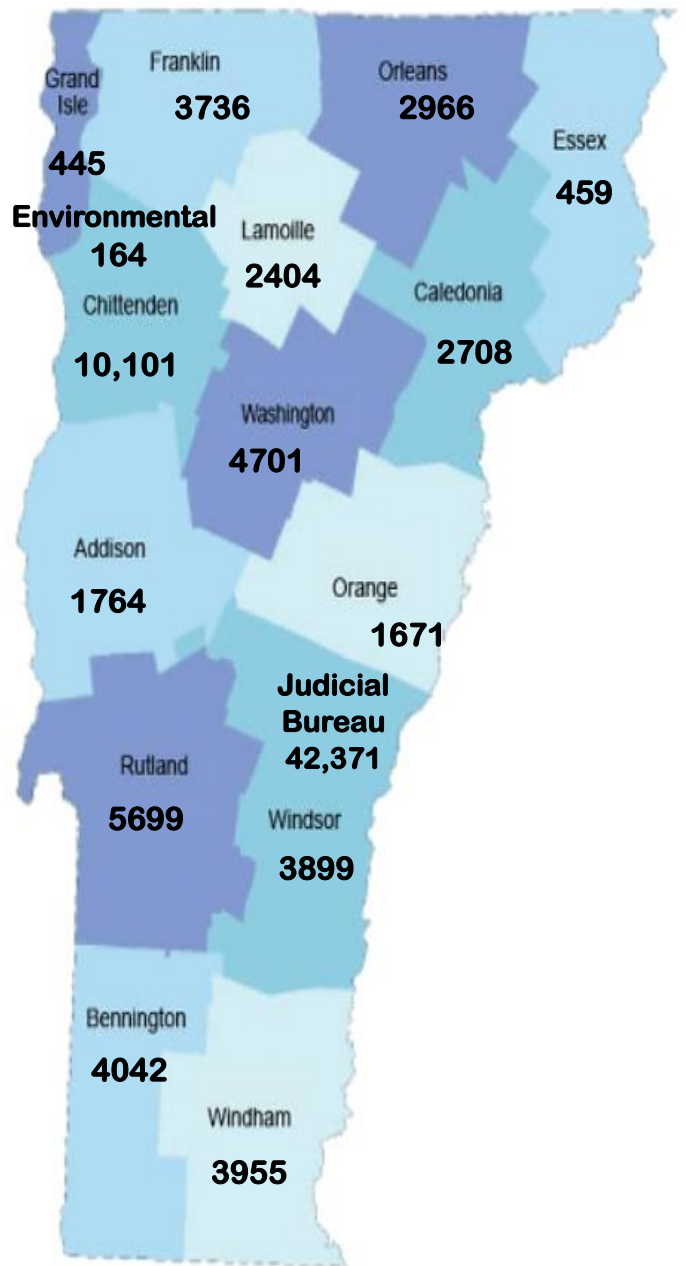
Highlights: Outgoing Cases

- There were 48,714 outgoing cases in the Vermont Superior Court (criminal, civil, family, probate, and environmental divisions) in FY24. This includes judgments, reopened, and inactive dispositions. This represents a 1% increase from the previous year.
- In addition:
 - 3,140 investigative requests were disposed in the criminal division, a 6% decrease from the previous year.
 - 4278 administrative matters were disposed in the probate division, a 5% increase from the previous year.
 - 42,370 cases were disposed in the Judicial Bureau, a 3% increase from the previous year.

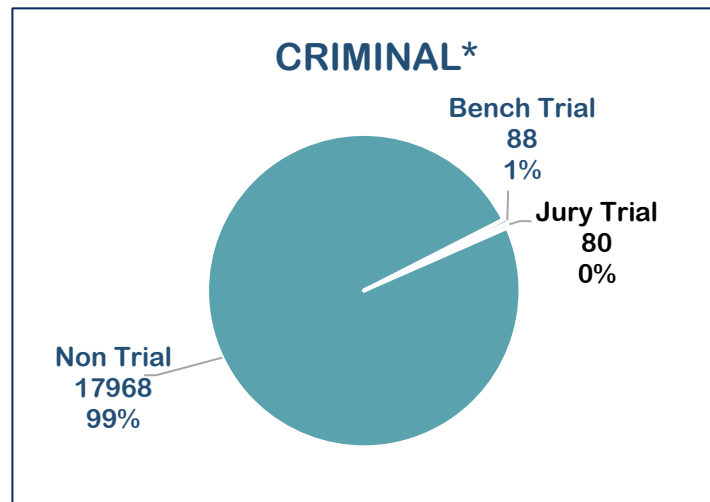
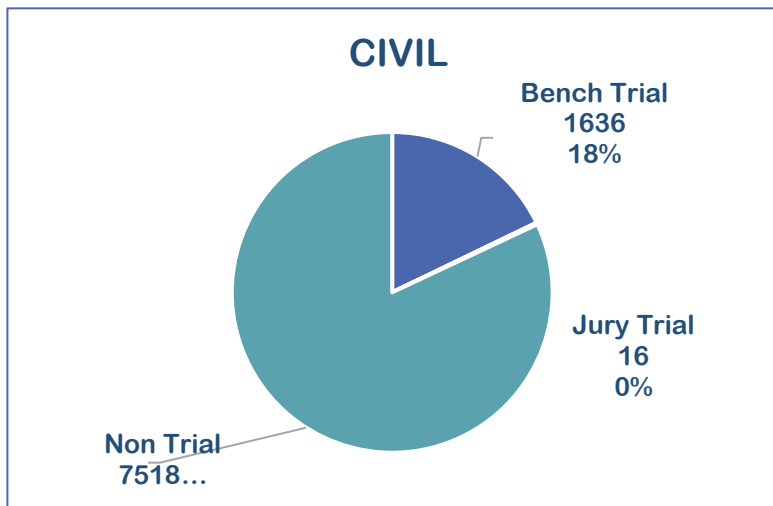


FY24 OUTGOING CASES: JUDGMENTS, REOPENED, AND INACTIVE DISPOSITIONS

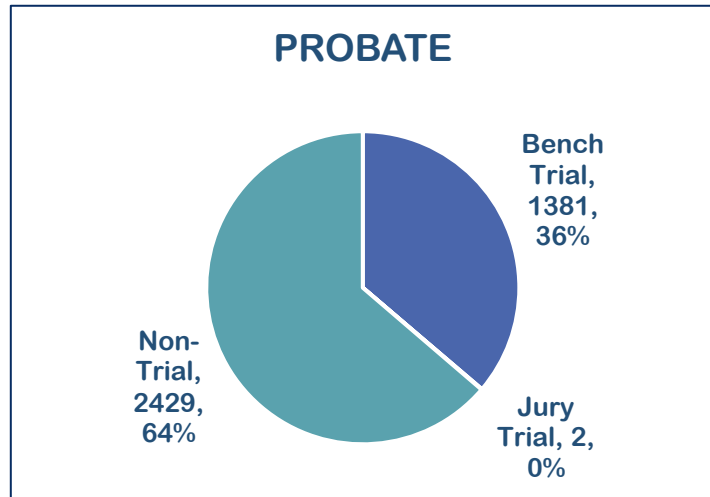
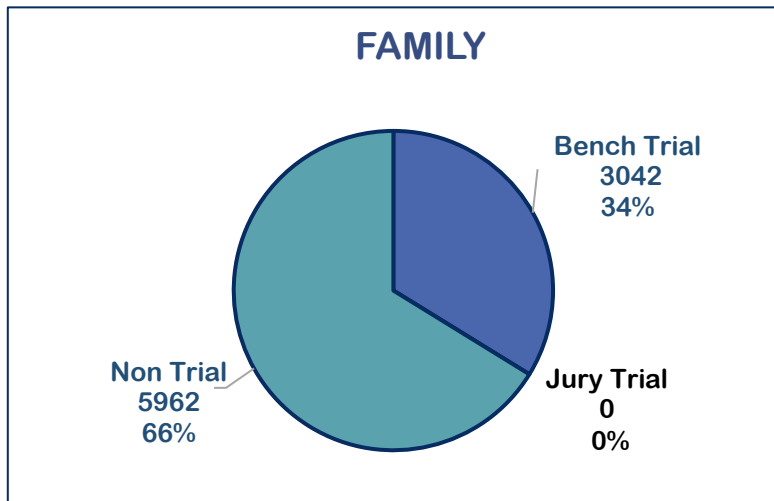
Outgoing Cases					
By Division					
	Criminal	Civil	Family	Probate	Total
Addison	772	395	431	166	1764
Bennington	2297	630	758	357	4042
Caledonia	1577	472	458	201	2708
Chittenden	5688	1975	1786	652	10101
Essex	216	109	91	43	459
Franklin	2117	814	561	244	3736
Grand Isle	169	123	85	68	445
Lamoille	1477	373	438	116	2404
Orange	767	354	371	179	1671
Orleans	1606	552	539	269	2966
Rutland	3171	937	1076	515	5699
Washington	2721	789	938	253	4701
Windham	2154	685	850	266	3955
Windsor	1832	962	622	483	3899
Environmental		164			164
					48714
Judicial Bureau		42371			



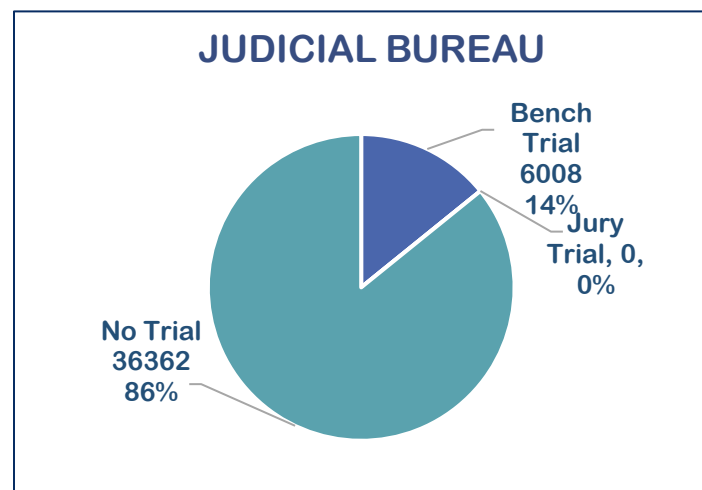
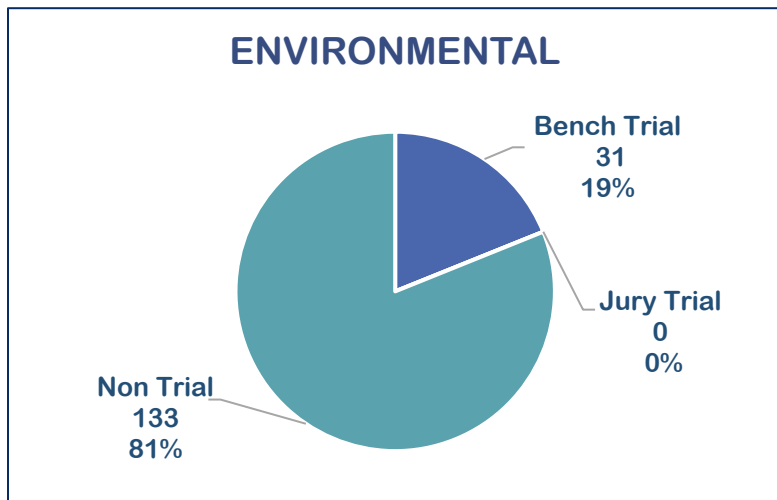
FY24 OUTGOING CASES: METHOD OF DISPOSITION



**Judgments & Reopened; does not include Inactive.*

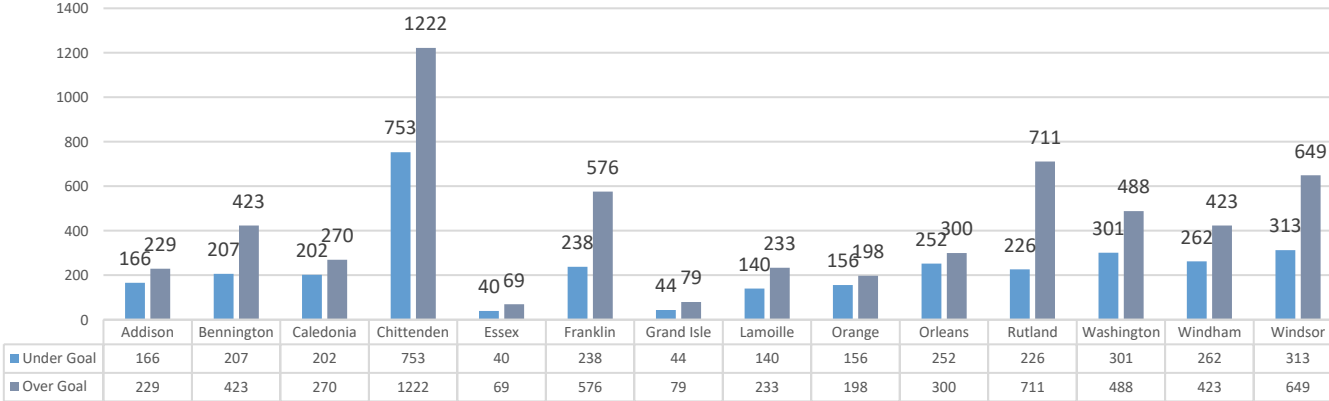


Does not include Administrative Matters

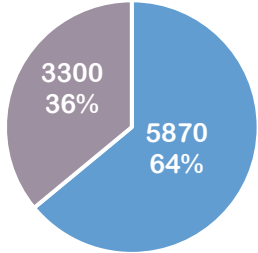


FY24 OUTGOING CASES: TIME TO DISPOSITION

Civil: Supreme Court Guidelines



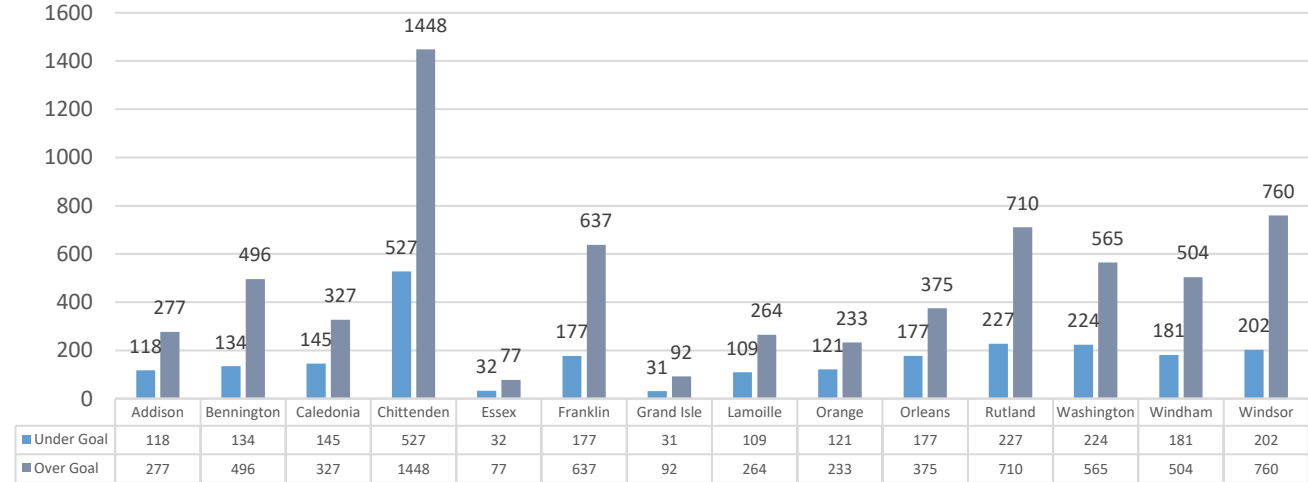
**Civil:
Supreme Court Guidelines**



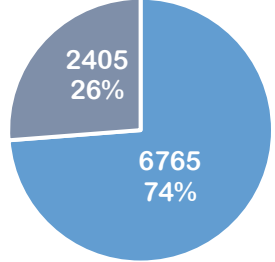
■ Under Goal ■ Over Goal

■ Under Goal ■ Over Goal

Civil: Revised Guidelines



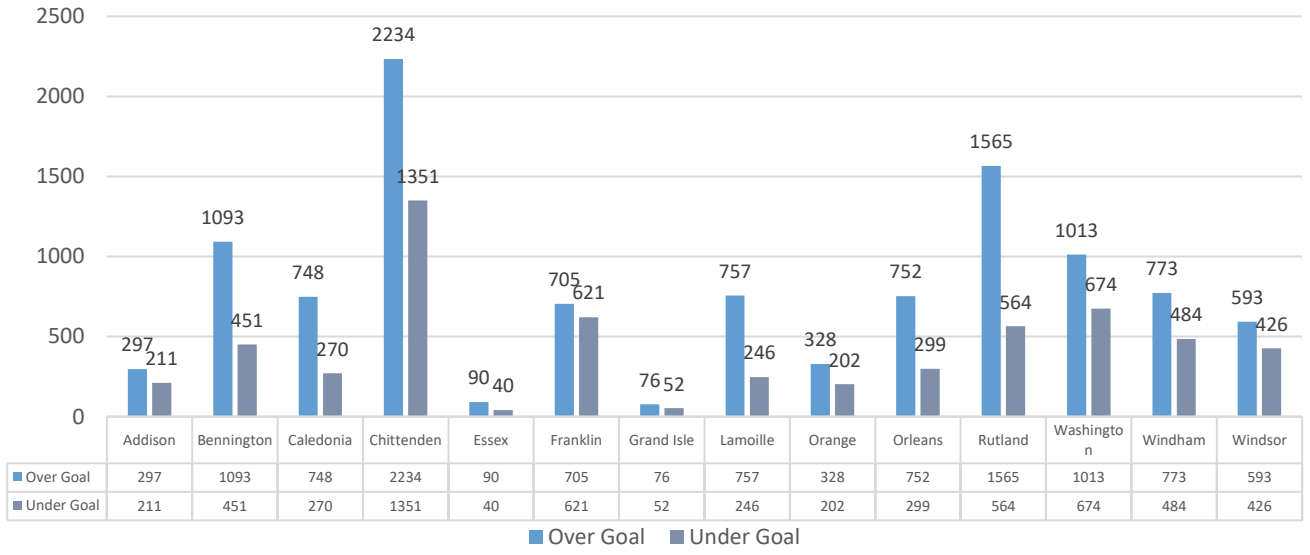
**Civil:
Revised Guidelines**



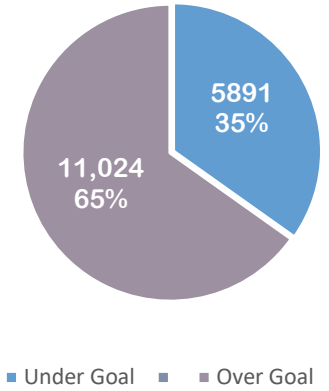
■ Under Goal ■ Over Goal

■ Under Goal ■ Over Goal

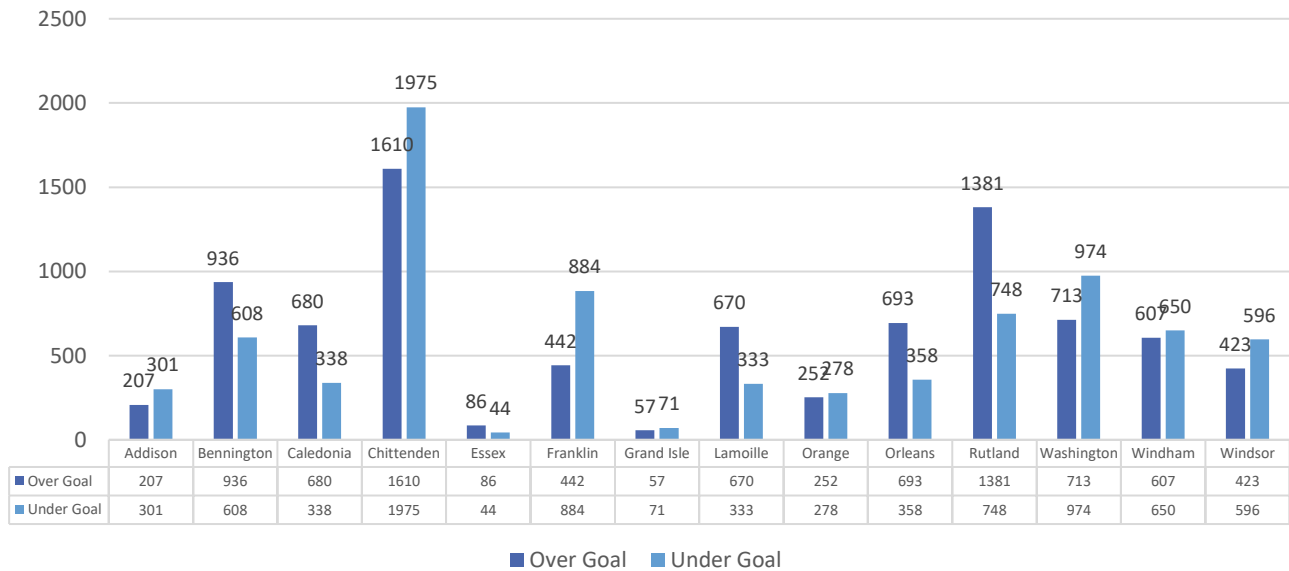
Criminal: Supreme Court Guidelines (Judgments Only)



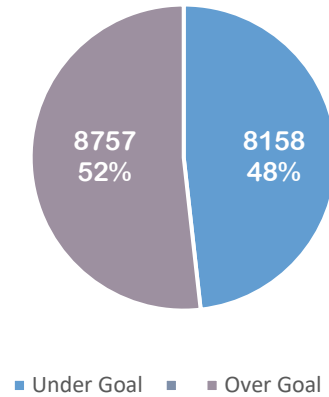
Criminal: Supreme Court Guidelines



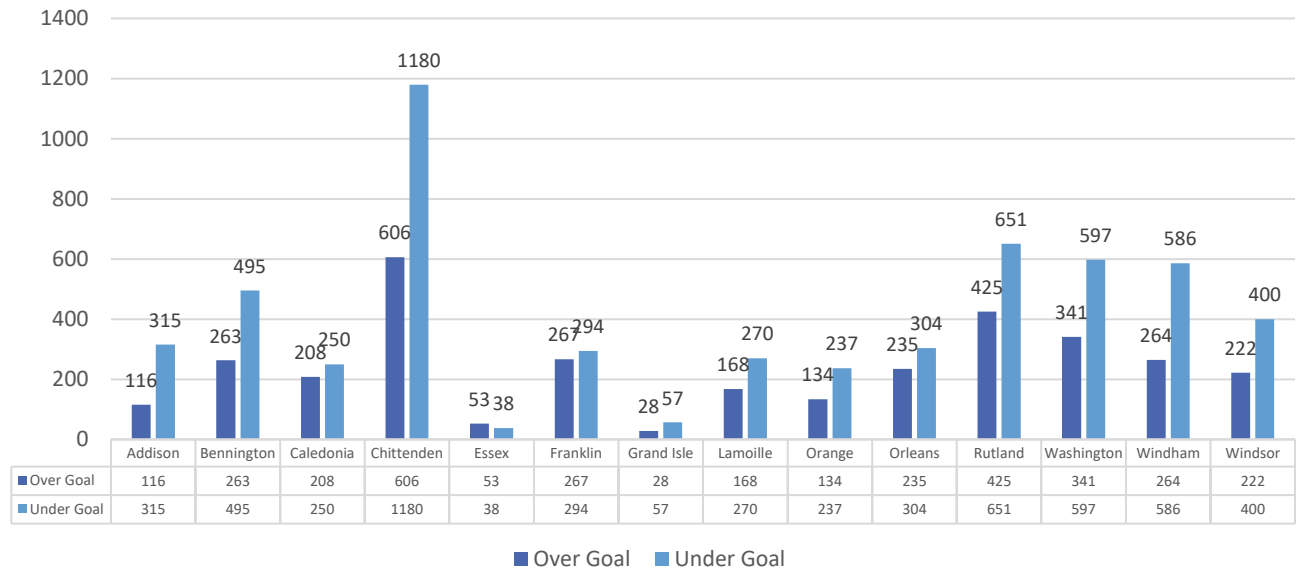
Criminal: Revised Guidelines (Judgments Only)



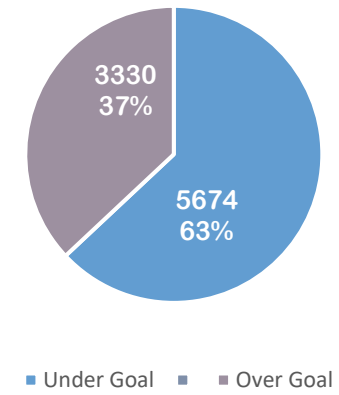
Criminal: Revised Guidelines



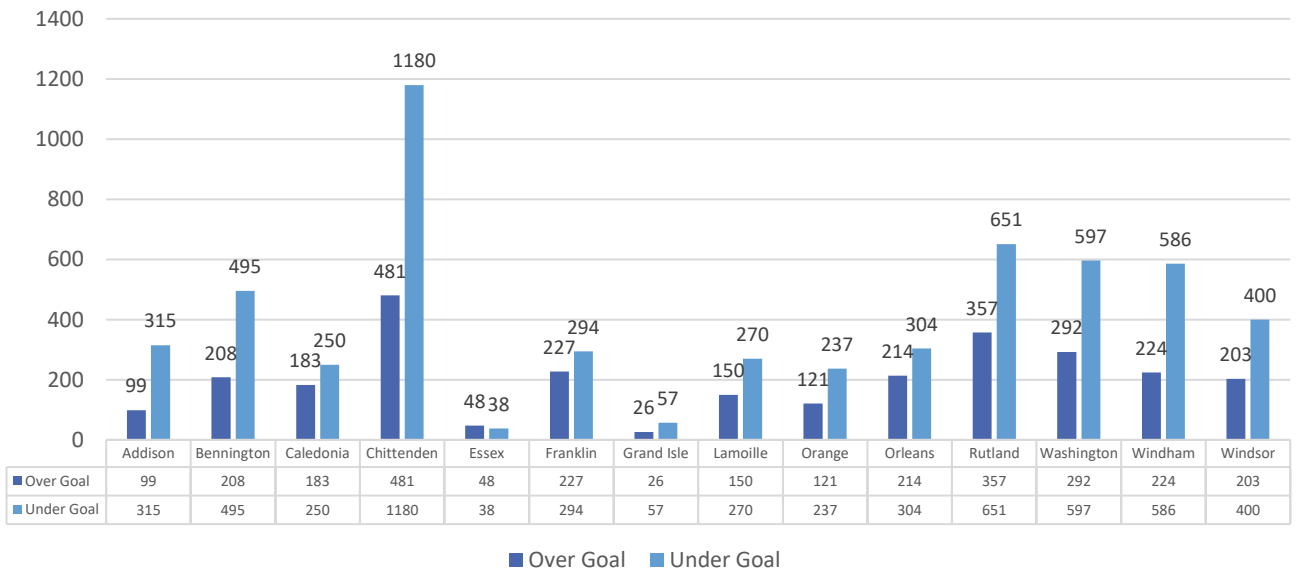
Family: Supreme Court Guidelines



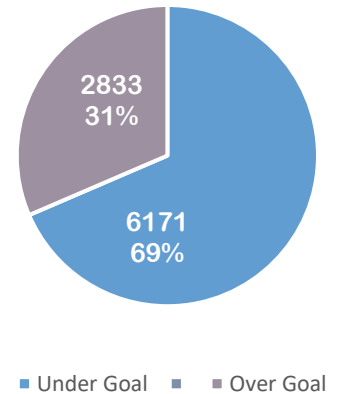
Family: Supreme Court Guidelines



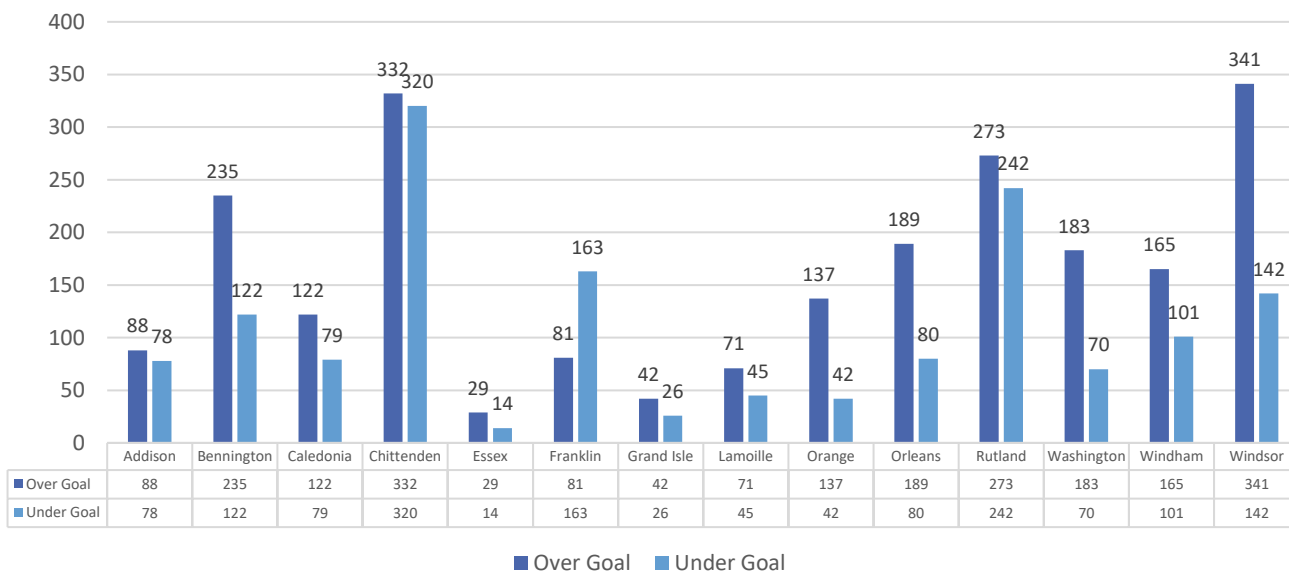
Family: Revised Guidelines



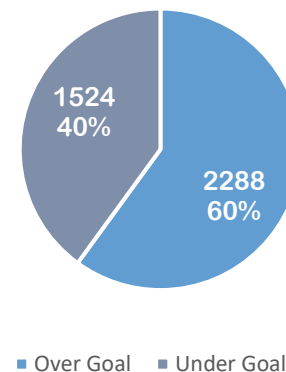
Family: Revised Guidelines



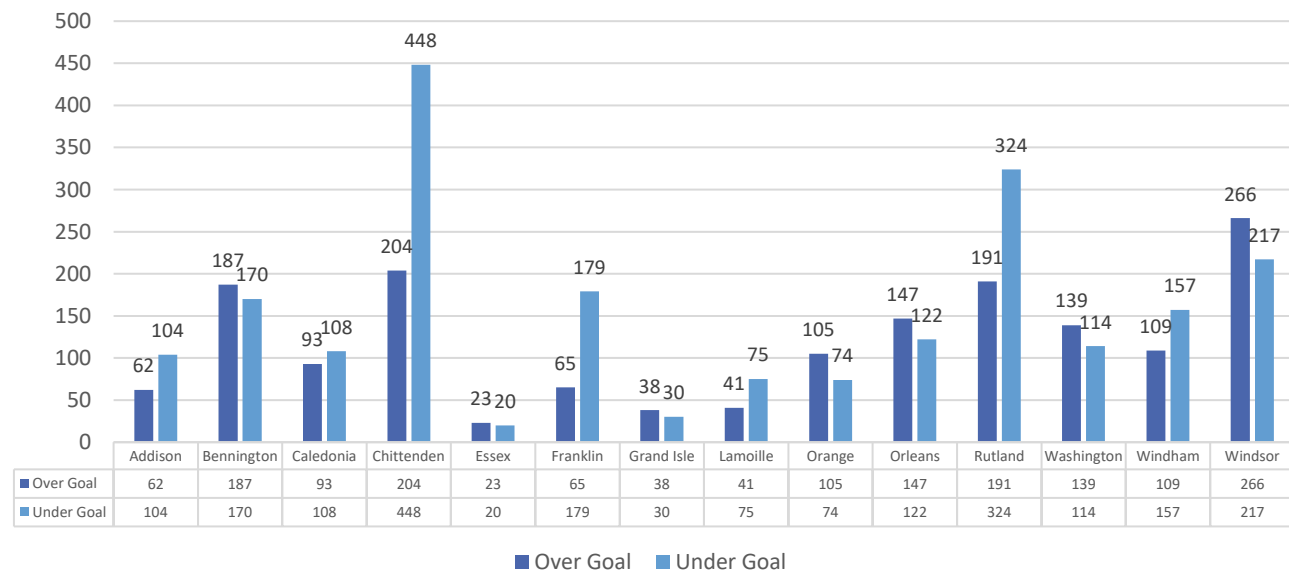
Probate: Supreme Court Guidelines



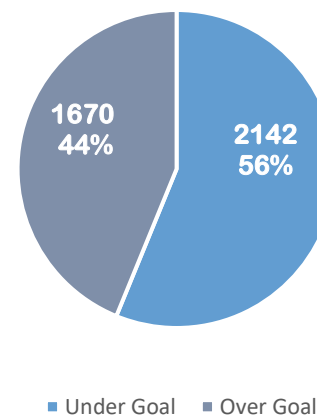
Probate: Supreme Court Guidelines



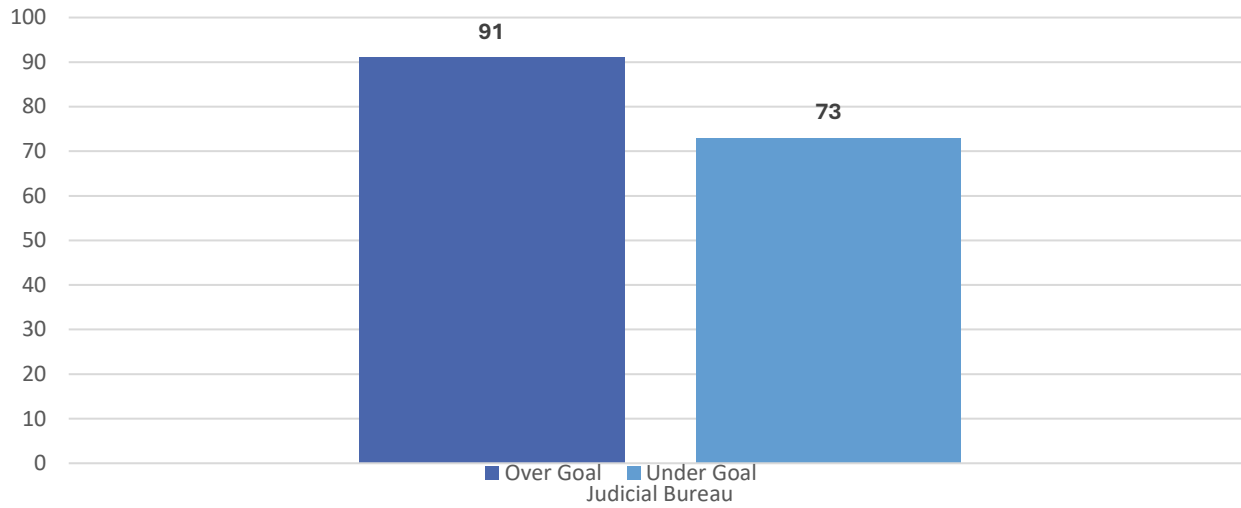
Probate: Revised Guidelines



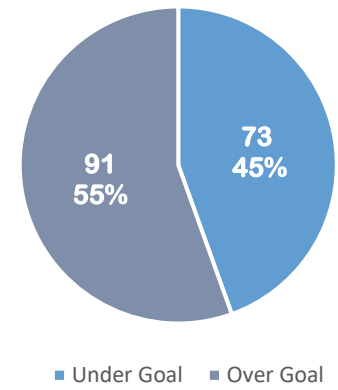
Probate: Revised Guidelines



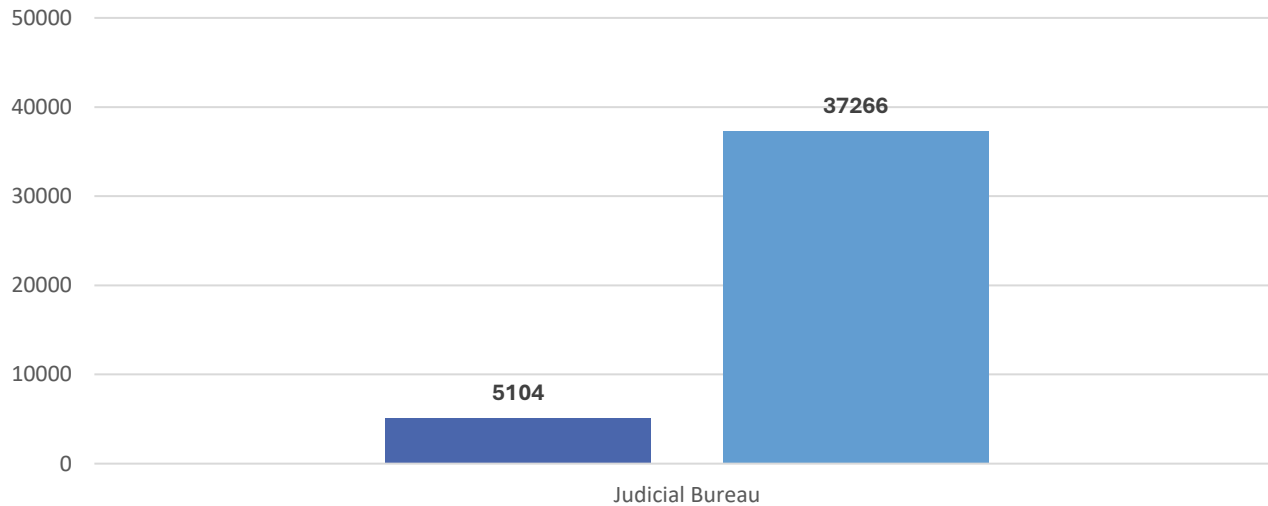
Environmental Division: Supreme Court / Target Guidelines



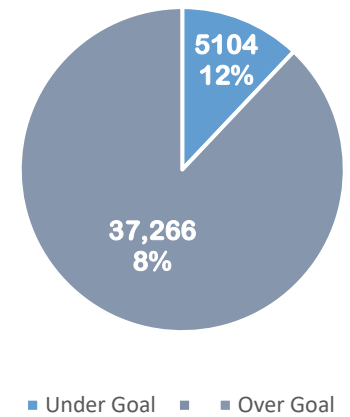
Environmental Division



Judicial Bureau: Supreme Court / Target Guidelines



Judicial Bureau



APPENDIX I: INCOMING CASES BY DIVISION

CIVIL

Unit	Appeal	Govt. Claim	Collection	Contract	Declaratory Relief	Employment	Foreclosure	Landlord/Tenant	Misc. Civil	Prisoner	Real Property	Small Claims	Stalking	Tort	Civil Total
Addison	6	0	44	9	2	0	16	70	7	7	4	95	75	15	350
Bennington	4	3	56	15	3	0	29	104	21	10	7	150	146	21	569
Caledonia	29	1	60	7	3	3	21	97	7	31	3	91	40	16	409
Chittenden	21	7	258	47	11	3	55	504	55	74	7	540	235	108	1925
Essex	0	1	15	1	1	0	7	18	0	9	2	22	13	2	91
Franklin	8	0	92	9	7	0	61	151	11	30	2	170	170	19	730
Grand Isle	2	0	15	1	5	0	17	20	2	0	0	21	21	3	107
Lamoille	3	3	51	9	4	0	29	59	7	1	6	69	49	11	301
Orange	4	1	50	6	1	1	32	62	5	3	5	89	56	10	325
Orleans	31	0	54	13	3	1	20	57	8	97	0	113	54	22	473
Rutland	27	0	126	16	7	1	64	244	21	37	8	209	144	38	942
Washington	20	9	107	18	8	4	51	141	41	75	0	191	93	24	782
Windham	5	3	61	17	5	3	46	180	19	29	4	150	109	32	663
Windsor	22	0	93	23	10	3	47	163	24	97	4	206	112	39	843
Total	182	28	1082	191	70	19	495	1870	228	500	52	2116	1317	360	8510

Unit	Abandoned Property	Eviction	Other	Landlord Tenant Total
Addison	0	67	3	70
Bennington	1	99	4	104
Caledonia	0	97	0	97
Chittenden	9	488	7	504
Essex	0	18	0	18
Franklin	2	147	2	151
Grand Isle	0	19	1	20
Lamoille	2	56	1	59
Orange	0	62	0	62
Orleans	0	57	0	57
Rutland	2	239	3	244
Washington	2	137	2	141
Windham	2	173	5	180
Windsor	3	159	1	163
Total	23	1818	29	1870

Sexual Assault	SA obo Minor	Stalking	Stalking obo Minor	SA / Stalking Total
3	0	71	1	75
2	2	128	13	145
1	0	35	6	42
2	2	210	17	231
1	0	17	3	21
0	0	154	23	177
0	0	20	0	20
2	0	46	0	48
2	3	45	6	56
0	1	48	3	52
2	0	127	10	139
2	1	86	2	91
1	0	95	3	99
2	0	99	16	117
20	10	1188	99	1317

CRIMINAL

Unit	Civil Misc.	Civil Suspension	Felony	Fish and Game	Jud. Bureau Appeal	Misc. Criminal	Misdemeanor	Fire Prevention	Criminal Total
Addison	7	41	144	17	0	0	549	0	758
Bennington	27	83	629	6	0	1	1267	0	2013
Caledonia	22	43	334	13	1	0	865	0	1278
Chittenden	96	232	1394	10	22	0	3793	0	5547
Essex	11	7	75	2	0	0	127	0	222
Franklin	23	45	501	19	0	0	1537	0	2125
Grand Isle	1	6	25	6	0	0	103	0	141
Lamoille	5	71	273	9	1	0	796	0	1155
Orange	17	32	185	5	0	0	493	0	732
Orleans	15	23	327	14	0	0	980	0	1359
Rutland	32	113	659	21	5	0	1662	0	2492
Washington	27	84	641	14	1	0	1785	0	2552
Windham	40	90	510	6	3	0	1608	0	2257
Windsor	83	60	491	2	3	0	1155	0	1794
Total	406	930	6188	144	36	1	16720	0	24425

Unit	Investigative Requests
Addison	79
Bennington	420
Caledonia	209
Chittenden	792
Essex	29
Franklin	212
Grand Isle	18
Lamoille	128
Orange	99
Orleans	177
Rutland	286
Washington	237
Windham	182
Windsor	151
Total	3019

FAMILY

Unit	Annulment	Desertion	Diss w/ Children	Diss. w/out Children	Juvenile	Mental Health	Misc. Family	Parentage	Protection Order	Foreign Order	Separation	UIFSA	Family Total
Addison	0	0	45	55	83	29	2	49	159	2	0	2	426
Bennington	0	0	45	69	168	51	4	77	309	1	0	8	732
Caledonia	0	0	40	56	89	40	8	56	175	2	0	3	469
Chittenden	0	0	202	223	247	255	14	125	684	10	0	24	1784
Essex	0	0	5	14	16	2	1	6	35	1	0	0	80
Franklin	0	0	73	89	178	34	9	78	323	2	0	8	794
Grand Isle	0	0	15	16	18	1	0	11	35	0	0	1	97
Lamoille	0	0	33	55	71	26	3	26	163	0	0	2	379
Orange	0	0	43	43	59	13	4	26	166	2	0	6	362
Orleans	0	0	45	54	116	35	4	47	191	1	0	6	499
Rutland	0	0	86	122	169	142	4	122	488	3	0	16	1152
Washington	0	0	83	98	185	112	3	58	355	2	0	9	905
Windham	0	0	65	104	114	353	2	69	241	2	0	6	956
Windsor	0	0	85	85	109	21	5	51	253	4	0	4	617
Total	0	0	865	1083	1622	1114	63	801	3577	32	0	95	9252

Unit	Vulnerable					Total CHINS	Delinquency	Youthful Offender	Total	
	CHINS A	CHINS B	CHINS C	CHINS D	Noncitizen				Delinquency	All Juvenile
Addison	4	28	3	2	0	37	34	12	46	83
Bennington	2	37	7	10	0	56	79	33	112	168
Caledonia	2	18	4	9	3	36	17	36	53	89
Chittenden	13	53	7	17	0	90	96	61	157	247
Essex	0	4	1	1	0	6	5	5	10	16
Franklin	0	57	5	7	0	69	87	22	109	178
Grand Isle	0	9	0	2	0	11	5	2	7	18
Lamoille	2	25	3	13	0	43	27	1	28	71
Orange	0	7	2	7	0	16	32	11	43	59
Orleans	10	16	3	0	0	29	66	21	87	116
Rutland	3	36	3	34	0	76	76	17	93	169
Washington	4	42	7	9	0	62	94	29	123	185
Windham	2	53	3	5	0	63	45	6	51	114
Windsor	2	19	2	16	0	39	49	21	70	109
Total	44	404	50	132	3	633	712	277	989	1622

Unit	Continued Treatment	Involuntary Medication	Imvoluntary Treatment	Emergency Exam	Total Mental Health
Addison	7	0	6	16	29
Bennington	2	0	15	34	51
Caledonia	7	0	9	24	40
Chittenden	60	2	115	78	255
Essex	1	0	0	1	2
Franklin	21	0	7	6	34
Grand Isle	1	0	0	0	1
Lamoille	8	0	7	11	26
Orange	10	0	0	3	13
Orleans	5	0	5	25	35
Rutland	22	14	76	30	142
Washington	25	18	69	0	112
Windham	23	44	260	26	353
Windsor	3	0	8	10	21
Total	195	78	577	264	1114

Extreme Risk Protection	Foreign Abuse Prevention	Relief From Abuse	RFA obo Minor	RFA/Neglect/Exploitation	Total Protection Order
3	0	137	19	0	159
4	0	272	23	10	309
0	1	152	18	4	175
5	0	594	62	23	684
0	0	30	5	0	35
1	0	257	55	10	323
1	0	32	2	0	35
2	0	146	12	3	163
1	0	133	30	2	166
5	0	148	37	1	191
5	0	426	44	13	488
3	0	305	41	6	355
0	0	210	25	6	241
6	0	212	33	2	253
36	1	3054	406	80	3577

PROBATE

Unit	Adoption	Estate	Guardianship Adult Involuntary	Guardianship Adult Voluntary	Guardianship Minor	Misc. Probate	Trust	Probate
Addison	19	154	22	8	10	3	6	222
Bennington	28	215	17	5	23	3	2	293
Caledonia	22	142	22	9	30	3	2	230
Chittenden	106	424	75	18	48	13	12	696
Essex	0	32	5	1	10	0	1	49
Franklin	35	183	20	8	39	1	3	289
Grand Isle	8	35	3	0	2	0	0	48
Lamoille	4	108	10	1	7	0	3	133
Orange	5	107	10	7	11	0	1	141
Orleans	15	126	21	7	30	1	0	200
Rutland	38	324	58	16	41	11	0	488
Washington	26	212	40	10	24	1	6	319
Windham	25	224	24	6	36	1	2	318
Windsor	29	273	32	7	39	2	7	389
Total	360	2559	359	103	350	39	45	3815

Unit	Adoption Adult	Adoption Minor - Agency	Adoption Minor-Private	Surrender & Relinquishment	Total Adoption
Addison	7	6	5	1	19
Bennington	2	22	4	0	28
Caledonia	1	18	2	1	22
Chittenden	15	74	16	1	106
Essex	0	0	0	0	0
Franklin	6	24	5	0	35
Grand Isle	1	7	0	0	8
Lamoille	0	0	4	0	4
Orange	0	4	1	0	5
Orleans	2	13	0	0	15
Rutland	9	22	5	2	38
Washington	5	12	9	0	26
Windham	3	18	4	0	25
Windsor	8	17	4	0	29
Total	59	237	59	5	360

Unit	Administrative Matters
Addison	427
Bennington	242
Caledonia	176
Chittenden	1136
Essex	25
Franklin	196
Grand Isle	81
Lamoille	150
Orange	161
Orleans	121
Rutland	534
Washington	425
Windham	367
Windsor	266
Total	4307

ENVIRONMENTAL

Unit	Act 250 and ANR De Novo Appeals	ANR & NRB Enforcement	Civil Citation	Misc. (Environmental)	Municipal De Novo Appeal	Municipal Enforcement	On the Record Appeal	Total
Environmental	17	21	10	2	53	28	8	139
Total	17	21	10	2	53	28	8	139

JUDICIAL BUREAU

Unit	Fish & Wildlife	Municipal Complaint	Vermont Civil Violation	Judicial Bureau Total
Judicial Bureau	277	878	41,808	42963
Total	277	878	41808	42963

APPENDIX II: OUTGOING CASES BY DIVISION

CIVIL

Unit	Appeal	Govt. Claim	Collection	Declaratory			Foreclosure	Landlord/ Tenant	Misc. Civil	Prisoner	Real Property	Small Claims	Stalking	Tort	Civil Total
				Contract	Relief	Employment									
Addison	10	0	39	8	1	0	19	90	13	9	2	108	75	21	395
Bennington	4	1	65	19	4	1	31	137	33	16	2	151	145	21	630
Caledonia	20	0	62	18	3	1	15	124	11	52	2	105	42	17	472
Chittenden	23	11	245	39	11	5	58	498	60	83	6	572	231	133	1975
Essex	1	1	12	0	2	0	11	19	4	10	1	23	21	4	109
Franklin	9	0	96	7	11	2	51	153	16	50	5	208	177	29	814
Grand Isle	1	0	22	6	5	0	18	24	1	0	0	24	20	2	123
Lamoille	5	1	48	16	9	0	45	65	6	1	4	109	48	16	373
Orange	2	1	52	5	4	0	23	62	3	2	3	129	56	12	354
Orleans	26	1	52	26	4	2	28	57	15	111	4	143	52	31	552
Rutland	19	0	110	18	3	1	56	260	30	37	2	218	139	44	937
Washington	19	6	112	11	5	0	41	139	35	73	3	218	91	36	789
Windham	5	2	68	14	7	3	39	188	27	22	4	176	99	31	685
Windsor	21	3	112	16	4	3	59	183	66	91	13	223	117	51	962
Total	165	27	1095	203	73	18	494	1999	320	557	51	2407	1313	448	9170

Unit	Abandoned Property		Eviction	Other	Landlord Tenant Total
	Property				
Addison	0		88	2	90
Bennington	2		130	5	137
Caledonia	0		124	0	124
Chittenden	6		481	9	498
Essex	0		19	0	19
Franklin	0		149	4	153
Grand Isle	0		24	0	24
Lamoille	2		63	0	65
Orange	2		60	0	62
Orleans	0		57	0	57
Rutland	1		256	3	260
Washington	2		134	3	139
Windham	2		184	2	188
Windsor	2		179	2	183
Total	19		1948	30	1999

Sexual Assault	SA obo Minor	Stalking	Stalking obo Minor	SA / Stalking Total
2	2	128	13	145
1	0	35	6	42
2	2	210	17	231
1	0	17	3	21
0	0	154	23	177
0	0	20	0	20
2	0	46	0	48
2	3	45	6	56
0	1	48	3	52
2	0	127	10	139
2	1	86	2	91
1	0	95	3	99
2	0	99	16	117
20	9	1181	103	1313

CRIMINAL

Unit	Civil Misc.	Civil Suspension	Felony	Fish and Game	Jud. Bureau Appeal	Misc. Criminal	Misdemeanor	Fire Prevention	Criminal Total
Addison	3	36	161	16	1	0	555	0	772
Bennington	26	103	701	9	0	0	1458	0	2297
Caledonia	25	84	384	12	1	0	1071	0	1577
Chittenden	118	267	1428	20	20	0	3835	0	5688
Essex	6	5	59	3	1	0	142	0	216
Franklin	20	68	503	20	0	0	1506	0	2117
Grand Isle	3	9	31	5	1	0	120	0	169
Lamoille	5	123	329	13	1	0	1006	0	1477
Orange	17	35	192	5	1	0	517	0	767
Orleans	13	30	430	16	1	0	1116	0	1606
Rutland	28	138	780	27	6	0	2192	0	3171
Washington	25	103	640	14	7	0	1932	0	2721
Windham	15	66	492	5	3	0	1573	0	2154
Windsor	85	69	499	4	6	1	1168	0	1832
Total	389	1136	6629	169	49	1	18191	0	26564

Unit	Investigative Requests
Addison	101
Bennington	440
Caledonia	213
Chittenden	808
Essex	28
Franklin	217
Grand Isle	22
Lamoille	132
Orange	101
Orleans	182
Rutland	298
Washington	228
Windham	206
Windsor	164
Total	3140

FAMILY

Unit	Annulment	Desertion	Diss w/ Children	Diss. w/out Children	Juvenile	Mental Health	Misc. Family	Parentage	Protection Order	Foreign Order	Separation	UIFSA	Family Total
Addison	0	0	32	57	99	29	5	46	160	2	0	1	431
Bennington	0	0	51	72	170	48	3	82	317	5	0	10	758
Caledonia	0	0	34	57	97	36	7	47	177	1	0	2	458
Chittenden	0	0	194	226	294	250	21	119	673	4	0	5	1786
Essex	0	0	7	15	23	2	1	4	38	1	0	0	91
Franklin	0	0	44	76	159	29	5	57	186	0	0	5	561
Grand Isle	0	0	10	15	17	1	0	10	30	1	0	1	85
Lamoille	1	0	41	57	115	27	2	36	155	2	0	2	438
Orange	0	0	54	55	39	14	4	35	162	5	0	3	371
Orleans	0	0	46	57	158	34	3	40	197	1	0	3	539
Rutland	0	0	67	108	182	142	3	94	467	1	0	12	1076
Washington	0	0	80	114	183	103	4	88	359	3	0	4	938
Windham	0	0	34	78	102	349	2	55	225	2	0	3	850
Windsor	0	0	57	90	128	19	4	57	259	2	0	6	622
Total	1	0	751	1077	1766	1083	64	770	3405	30	0	57	9004

Unit	CHINS A	CHINS B	CHINS C	CHINS D	Vulnerable Noncitizen	Total CHINS	Delinquency	Youthful Offender	Total Delinquency	All Juvenile
Addison	4	33	3	2	0	42	48	9	57	99
Bennington	3	33	7	19	0	62	78	30	108	170
Caledonia	1	34	3	16	2	56	17	24	41	97
Chittenden	13	69	6	16	0	104	125	65	190	294
Essex	1	14	0	1	0	16	4	3	7	23
Franklin	4	30	6	15	0	55	77	27	104	159
Grand Isle	0	3	1	3	0	7	6	4	10	17
Lamoille	4	55	2	12	0	73	35	7	42	115
Orange	0	3	1	7	0	11	20	8	28	39
Orleans	17	52	4	1	0	74	63	21	84	158
Rutland	2	52	7	28	0	89	80	13	93	182
Washington	6	32	6	8	0	52	86	45	131	183
Windham	1	47	2	8	0	58	38	6	44	102
Windsor	4	22	3	14	0	43	60	25	85	128
Total	60	479	51	150	2	742	737	287	1024	1766

Unit	Continued Treatment	Involuntary Medication	Involuntary Treatment	Emergency Exam	Total Mental Health
Addison	7	0	7	15	29
Bennington	2	0	13	33	48
Caledonia	5	0	7	24	36
Chittenden	54	1	117	78	250
Essex	1	0	0	1	2
Franklin	16	0	7	6	29
Grand Isle	1	0	0	0	1
Lamoille	9	0	7	11	27
Orange	11	0	0	3	14
Orleans	4	0	5	25	34
Rutland	23	14	75	30	142
Washington	21	18	64	0	103
Windham	23	43	257	26	349
Windsor	2	0	7	10	19
Total	179	76	566	262	1083

Extreme Risk Protection	Foreign Abuse Prevention	Relief from Abuse	Relief from Abuse obo Minor	RFA/Neglect/Exploitation	Total Protection Order
4	0	138	18	0	160
2	0	276	28	11	317
0	0	150	23	4	177
5	0	587	59	22	673
0	0	34	4	0	38
1	0	149	30	6	186
1	0	27	2	0	30
2	0	135	13	5	155
1	0	129	30	2	162
6	0	156	34	1	197
5	0	406	43	13	467
2	0	308	43	6	359
0	0	197	22	6	225
6	0	221	30	2	259
35	0	2913	379	78	3405

PROBATE

Unit	Adoption	Estate	Guardianship Adult Involuntary	Guardianship Adult Voluntary	Guardianship Minor	Misc. Probate	Trust	Probate
Addison	20	120	10	4	9	1	2	166
Bennington	7	295	16	6	33	0	0	357
Caledonia	23	94	20	7	51	4	2	201
Chittenden	106	384	73	21	38	12	18	652
Essex	1	31	2	1	8	0	0	43
Franklin	35	154	19	5	29	2	0	244
Grand Isle	6	53	4	0	4	0	1	68
Lamoille	2	97	8	1	7	0	1	116
Orange	6	142	11	4	12	0	4	179
Orleans	19	169	37	5	37	0	2	269
Rutland	49	341	54	15	44	8	4	515
Washington	22	154	36	11	21	4	5	253
Windham	23	188	26	6	22	1	0	266
Windsor	25	396	26	6	27	1	2	483
Total	344	2618	342	92	342	33	41	3812

Unit	Adoption Adult	Adoption-Conversion	Adoption Minor-Agency	Adoption Minor-Private	Surrender & Relinquishment	Total Adoption	Unit	Administrative Matters
Addison	7	0	5	7	1	20	Addison	418
Bennington	1	0	5	1	0	7	Bennington	236
Caledonia	2	1	15	5	0	23	Caledonia	173
Chittenden	12	0	71	22	1	106	Chittenden	1149
Essex	1	0	0	0	0	1	Essex	28
Franklin	5	0	27	3	0	35	Franklin	193
Grand Isle	1	0	5	0	0	6	Grand Isle	79
Lamoille	0	0	0	2	0	2	Lamoille	155
Orange	2	0	2	2	0	6	Orange	160
Orleans	3	0	14	2	0	19	Orleans	112
Rutland	11	0	22	16	0	49	Rutland	533
Washington	6	0	10	6	0	22	Washington	419
Windham	1	0	18	4	0	23	Windham	364
Windsor	5	0	14	6	0	25	Windsor	259
Total	57	1	208	76	2	344	Total	4278

ENVIRONMENTAL

Unit	Act 250 and ANR De Novo Appeals	ANR & NRB Enforcement	Civil Citation	Misc. (Environmental)	Municipal De Novo Appeal	Municipal Enforcement	On the Record Appeal	Total
Environmental	24	18	12	4	71	26	9	164
Total	24	18	12	4	71	26	9	164

JUDICIAL BUREAU

Unit	Fish & Wildlife	Municipal Complaint	Vermont Civil Violation	Judicial Bureau Total
Judicial Bureau	280	923	41,167	42370
Total	280	923	41167	42370

Appendix III: FY24 SUMMARY OF CASELOAD BY UNIT

ADDISON

Civil Division	Incoming	Outgoing	Pending End of Year Active	Clearance Rate
Appeal	6	10	1	167%
Claim Against Government	0	0	0	
Collection	44	39	30	89%
Contract	9	8	15	89%
Declaratory Relief	2	1	4	50%
Employment	0	0	3	
Foreclosure	16	19	26	119%
Landlord/Tenant	70	90	26	129%
Abandoned Property	0	0	0	
Eviction	67	88	24	131%
Other	3	2	2	67%
Miscellaneous Civil	7	13	5	186%
Prisoner	7	9	2	129%
Real Property	4	2	5	50%
Small Claims	95	108	39	114%
Stalking	75	75	2	100%
Sexual Assault	3	3	0	100%
Sexual Assault on behalf of Minor	1	0	1	0%
Stalking	70	71	1	101%
Stalking on behalf of Minor	1	1	0	100%
Tort	15	21	21	140%
Total	350	395	179	113%

Criminal Division	Incoming	Outgoing	Pending End of Year Active	Clearance Rate
Civil Miscellaneous	7	3	16	43%
Civil Suspension	41	36	19	88%
Felony	144	161	110	112%
Domestic Violence	19	19	14	100%
Drugs	5	9	2	180%
Elder Abuse	0	0	0	
Motor Vehicle-DWI/DUI	17	16	10	94%
Motor Vehicle-Other	12	13	10	108%
Other	2	3	0	150%
Person	26	26	38	100%
Property	51	61	30	120%
Protection Order Violation	0	0	0	
Public Order	12	14	6	117%
Weapons	0	0	0	
Fish and Game	17	16	2	94%
Judicial Bureau Appeal	0	1	0	
Miscellaneous (Criminal)	0	0	0	
Misdemeanor	549	555	250	101%
Domestic Violence	38	27	22	71%
Drugs	12	9	6	75%
Elder Abuse	0	0	0	
Motor Vehicle-DWI/DUI	112	113	51	101%
Motor Vehicle-Other	142	135	54	95%
Other	14	25	0	179%
Person	29	31	20	107%
Property	81	82	36	101%
Protection Order Violation	18	20	11	111%
Public Order	103	112	50	109%
Weapons	0	1	0	
Uniform Fire Prevention Ticket	0	0	0	
Total	758	772	397	102%
Investigative Requests	79	101	2	128%

Family Division	Incoming	Outgoing	Pending End of Year Active	Clearance Rate
Annulment	0	0	0	
Desertion	0	0	0	
Dissolution with Children	45	32	40	71%
Dissolution without Children	55	57	21	104%
Juvenile	83	99	40	119%
CHINS A- Abandoned or Abused	4	4	1	100%
CHINS B- Neglect	28	33	10	118%
CHINS C- Beyond Control	3	3	0	100%
CHINS D- Truant	2	2	0	100%
Delinquency	34	48	17	141%
Vulnerable Noncitizen Child	0	0	0	
Youthful Offender	12	9	12	75%
Mental Health	29	29	1	100%
Continued Treatment	7	7	0	100%
Involuntary Medication	0	0	0	
Involuntary Treatment	6	7	0	117%
Warrant for Emergency Exam	16	15	1	94%
Misc. Family	2	5	1	250%
Parentage	49	46	29	94%
Protection Order	159	160	3	101%
Extreme Risk Protection Order	3	4	0	133%
Registration of Foreign Abuse Prevention	0	0	0	
Relief from Abuse	137	138	2	101%
Relief from Abuse on behalf of a Minor	19	18	1	95%
Relief from Abuse/Neglect/Exploitation	0	0	0	
Registration of Foreign Order	2	2	0	100%
Separation	0	0	0	
UIFSA	2	1	2	50%
Total	426	431	137	101%

Probate Division	Incoming	Outgoing	Pending End of Year Active	Clearance Rate
Adoption	19	20	3	105%
Adult	7	7	0	100%
Minor- Agency	6	5	1	83%
Minor- Private	5	7	2	140%
Surrender & Relinquishment	1	1	0	100%
Estate	154	120	253	78%
Guardianship Adult	30	14	17	47%
Involuntary	22	10	13	45%
Voluntary	8	4	4	50%
Guardianship Minor	10	9	5	90%
Custodial	8	7	4	88%
Financial	1	2	0	200%
Permanent	0	0	0	
Vulnerable Noncitizen Child	1	0	1	0%
Misc. Probate	3	1	3	33%
Trust	6	2	14	33%
Total	222	166	295	75%
Administrative Matters	427	418	21	98%

BENNINGTON

Civil Division	Incoming	Outgoing	Pending End of Year Active	Clearance Rate
Appeal	4	4	1	100%
Claim Against Government	3	1	2	33%
Collection	56	65	17	116%
Contract	15	19	9	127%
Declaratory Relief	3	4	4	133%
Employment	0	1	0	
Foreclosure	29	31	28	107%
Landlord/Tenant	104	137	38	132%
Abandoned Property	1	2	0	200%
Eviction	99	130	38	131%
Other	4	5	0	125%
Miscellaneous Civil	21	33	7	157%
Prisoner	10	16	11	160%
Real Property	7	2	7	29%
Small Claims	150	151	56	101%
Stalking	146	145	6	99%
Sexual Assault	2	2	0	100%
Sexual Assault on behalf of Minor	2	2	0	100%
Stalking	129	128	6	99%
Stalking on behalf of Minor	13	13	0	100%
Tort	21	21	35	100%
Total	569	630	221	111%

Criminal Division	Incoming	Outgoing	Pending End of Year Active	Clearance Rate
Civil Miscellaneous	27	26	25	96%
Civil Suspension	83	103	47	124%
Felony	629	701	447	111%
Domestic Violence	77	88	40	114%
Drugs	99	143	66	144%
Elder Abuse	0	0	0	
Motor Vehicle-DWI/DUI	33	24	27	73%
Motor Vehicle-Other	45	37	25	82%
Other	0	1	1	
Person	148	161	126	109%
Property	176	184	119	105%
Protection Order Violation	9	16	10	178%
Public Order	42	44	31	105%
Weapons	0	3	2	
Fish and Game	6	9	1	150%
Judicial Bureau Appeal	0	0	0	
Miscellaneous (Criminal)	1	0	1	0%
Misdemeanor	1267	1458	831	115%
Domestic Violence	35	48	20	137%
Drugs	112	126	70	113%
Elder Abuse	0	0	0	
Motor Vehicle-DWI/DUI	176	202	92	115%
Motor Vehicle-Other	273	318	187	116%
Other	5	5	1	100%
Person	81	75	63	93%
Property	259	281	168	108%
Protection Order Violation	26	44	20	169%
Public Order	299	359	208	120%
Weapons	1	0	2	0%
Uniform Fire Prevention Ticket	0	0	0	
Total	2013	2297	1352	114%
Investigative Requests	420	440	5	105%

Family Division	Incoming	Outgoing	Pending End of Year Active	Clearance Rate
Annulment	0	0	0	
Desertion	0	0	0	
Dissolution with Children	45	51	41	113%
Dissolution without Children	69	72	22	104%
Juvenile	168	170	57	101%
CHINS A- Abandoned or Abused	2	3	0	150%
CHINS B- Neglect	37	33	15	89%
CHINS C- Beyond Control	7	7	0	100%
CHINS D- Truant	10	19	5	190%
Delinquency	79	78	25	99%
Vulnerable Noncitizen Child	0	0	0	
Youthful Offender	33	30	12	91%
Mental Health	51	48	3	94%
Continued Treatment	2	2	0	100%
Involuntary Medication	0	0	0	
Involuntary Treatment	15	13	2	87%
Warrant for Emergency Exam	34	33	1	97%
Misc. Family	4	3	2	75%
Parentage	77	82	36	106%
Protection Order	309	317	9	103%
Extreme Risk Protection Order	4	2	2	50%
Registration of Foreign Abuse Prevention	0	0	0	
Relief from Abuse	272	276	6	101%
Relief from Abuse on behalf of a Minor	23	28	1	122%
Relief from Abuse/Neglect/Exploitation	10	11	0	110%
Registration of Foreign Order	1	5	1	500%
Separation	0	0	0	
UIFSA	8	10	3	125%
Total	732	758	174	104%

Probate Division	Incoming	Outgoing	Pending End of Year Active	Clearance Rate
Adoption	28	7	26	25%
Adult	2	1	1	50%
Minor- Agency	22	5	17	23%
Minor- Private	4	1	8	25%
Surrender & Relinquishment	0	0	0	
Estate	215	295	435	137%
Guardianship Adult	17	22	13	129%
Involuntary	17	16	11	94%
Voluntary	5	6	2	120%
Guardianship Minor	23	33	13	143%
Custodial	16	16	12	100%
Financial	5	10	1	200%
Permanent	2	7	0	350%
Vulnerable Noncitizen Child	0	0	0	
Misc. Probate	3	0	4	
Trust	2	0	4	
Total	293	357	495	122%
Administrative Matters	242	236	14	98%

CALEDONIA

Civil Division	Incoming	Outgoing	Pending End of Year Active	Clearance Rate
Appeal	29	20	14	69%
Claim Against Government	1	0	2	
Collection	60	62	26	103%
Contract	7	18	11	257%
Declaratory Relief	3	3	5	100%
Employment	3	1	4	33%
Foreclosure	21	15	20	71%
Landlord/Tenant	97	124	24	128%
Abandoned Property	0	0	0	
Eviction	97	124	24	128%
Other	0	0	0	
Miscellaneous Civil	7	11	2	157%
Prisoner	31	52	15	168%
Real Property	3	2	3	67%
Small Claims	91	105	41	115%
Stalking	40	42	1	105%
Sexual Assault	1	1	0	100%
Sexual Assault on behalf of Minor	0	0	0	
Stalking	34	35	0	103%
Stalking on behalf of Minor	5	6	1	120%
Tort	16	17	22	106%
Total	409	472	190	115%

Criminal Division	Incoming	Outgoing	Pending End of Year Active	Clearance Rate
Civil Miscellaneous	22	25	19	114%
Civil Suspension	43	84	53	195%
Felony	334	384	281	115%
Domestic Violence	46	56	38	122%
Drugs	32	48	22	150%
Elder Abuse	0	0	0	
Motor Vehicle-DWI/DUI	15	14	11	93%
Motor Vehicle-Other	27	22	16	81%
Other	1	1	0	100%
Person	97	110	88	113%
Property	104	108	87	104%
Protection Order Violation	4	8	1	200%
Public Order	8	17	17	213%
Weapons	0	0	1	
Fish and Game	13	12	6	92%
Judicial Bureau Appeal	1	1	3	100%
Miscellaneous (Criminal)	0	0	30	
Misdemeanor	865	1071	727	124%
Domestic Violence	51	52	53	102%
Drugs	30	47	20	157%
Elder Abuse	0	0	0	
Motor Vehicle-DWI/DUI	137	179	122	131%
Motor Vehicle-Other	170	214	90	126%
Other	3	3	0	100%
Person	74	93	59	126%
Property	157	185	112	118%
Protection Order Violation	17	15	22	88%
Public Order	226	283	249	125%
Weapons	0	0	0	
Uniform Fire Prevention Ticket	0	0	0	
Total	1278	1577	1119	123%
Investigative Requests	209	213	2	102%

Family Division	Incoming	Outgoing	Pending End of Year Active	Clearance Rate
Annulment	0	0	0	
Desertion	0	0	0	
Dissolution with Children	40	34	50	85%
Dissolution without Children	56	57	29	102%
Juvenile	89	97	67	109%
CHINS A- Abandoned or Abused	2	1	1	50%
CHINS B- Neglect	18	34	19	189%
CHINS C- Beyond Control	4	3	1	75%
CHINS D- Truant	9	16	1	178%
Delinquency	17	17	22	100%
Vulnerable Noncitizen Child	3	2	1	67%
Youthful Offender	36	24	22	67%
Mental Health	40	36	5	90%
Continued Treatment	7	5	3	71%
Involuntary Medication	0	0	0	
Involuntary Treatment	9	7	2	78%
Warrant for Emergency Exam	24	24	0	100%
Misc. Family	8	7	4	88%
Parentage	56	47	73	84%
Protection Order	175	177	10	101%
Extreme Risk Protection Order	0	0	0	
Registration of Foreign Abuse Prevention	1	0	1	0%
Relief from Abuse	152	150	9	99%
Relief from Abuse on behalf of a Minor	18	23	0	128%
Relief from Abuse/Neglect/Exploitation	4	4	0	100%
Registration of Foreign Order	2	1	2	50%
Separation	0	0	0	
UIFSA	3	2	4	67%
Total	469	458	244	98%

Probate Division	Incoming	Outgoing	Pending End of Year Active	Clearance Rate
Adoption	22	23	14	105%
Adult	1	2	0	200%
Conversion	0	1	1	
Minor- Agency	18	15	4	83%
Minor- Private	2	5	8	250%
Surrender & Relinquishment	1	0	1	
Estate	142	94	732	66%
Guardianship Adult	22	27	47	123%
Involuntary	22	20	38	91%
Voluntary	9	7	9	78%
Guardianship Minor	30	51	167	170%
Custodial	20	45	126	225%
Financial	2	3	18	150%
Permanent	8	3	23	38%
Vulnerable Noncitizen Child	0	0	0	
Misc. Probate	3	4	1	133%
Trust	2	2	81	100%
Total	230	201	1042	87%
Administrative Matters	176	173	56	98%

CHITTENDEN

Civil Division	Incoming	Outgoing	Pending End of Year Active	Clearance Rate
Appeal	21	23	15	110%
Claim Against Government	7	11	4	157%
Collection	258	245	104	95%
Contract	47	39	47	83%
Declaratory Relief	11	11	8	100%
Employment	3	5	8	167%
Foreclosure	55	58	67	105%
Landlord/Tenant	504	498	182	99%
Abandoned Property	9	6	3	67%
Eviction	488	483	173	99%
Other	7	9	6	129%
Miscellaneous Civil	55	60	31	109%
Prisoner	74	83	46	112%
Real Property	7	6	8	86%
Small Claims	540	572	317	106%
Stalking	235	231	9	98%
Sexual Assault	2	2	0	100%
Sexual Assault on behalf of Minor	2	2	0	100%
Stalking	214	210	9	98%
Stalking on behalf of Minor	17	17	0	100%
Tort	108	133	156	123%
Total	1925	1975	1002	103%

Criminal Division	Incoming	Outgoing	Pending End of Year Active	Clearance Rate
Civil Miscellaneous	96	118	71	123%
Civil Suspension	232	267	58	115%
Felony	1394	1428	794	102%
Domestic Violence	189	179	88	95%
Drugs	94	105	48	112%
Elder Abuse	0	0	0	
Motor Vehicle-DWI/DUI	48	60	20	125%
Motor Vehicle-Other	168	152	88	90%
Other	0	0	0	
Person	285	297	228	104%
Property	540	566	288	105%
Protection Order Violation	9	7	4	78%
Public Order	61	61	30	100%
Weapons	0	1	0	
Fish and Game	10	20	5	200%
Judicial Bureau Appeal	22	20	11	91%
Miscellaneous (Criminal)	0	0	67	
Misdemeanor	3793	3835	1979	101%
Domestic Violence	132	152	71	115%
Drugs	118	124	58	105%
Elder Abuse	0	0	0	
Motor Vehicle-DWI/DUI	507	532	300	105%
Motor Vehicle-Other	488	536	216	110%
Other	0	1	0	
Person	423	458	209	108%
Property	1423	1270	734	89%
Protection Order Violation	94	95	58	101%
Public Order	606	662	333	109%
Weapons	2	5	0	250%
Uniform Fire Prevention Ticket	0	0	0	
Total	5547	5688	2985	103%
Investigative Requests	792	808	14	102%

Family Division	Incoming	Outgoing	Pending End of Year Active	Clearance Rate
Annulment	0	0	0	
Desertion	0	0	0	
Dissolution with Children	202	194	158	96%
Dissolution without Children	223	226	132	101%
Juvenile	247	294	218	119%
CHINS A- Abandoned or Abused	13	13	11	100%
CHINS B- Neglect	53	69	41	130%
CHINS C- Beyond Control	7	6	5	86%
CHINS D- Truant	17	16	12	94%
Delinquency	96	125	97	130%
Vulnerable Noncitizen Child	0	0	0	
Youthful Offender	61	65	52	107%
Mental Health	255	250	18	98%
Continued Treatment	60	54	7	90%
Involuntary Medication	2	1	1	50%
Involuntary Treatment	115	117	10	102%
Warrant for Emergency Exam	78	78	0	100%
Misc. Family	14	21	4	150%
Parentage	125	119	106	95%
Protection Order	684	673	43	98%
Extreme Risk Protection Order	5	5	0	100%
Registration of Foreign Abuse Prevention	0	0	0	
Relief from Abuse	594	587	36	99%
Relief from Abuse on behalf of a Minor	62	59	6	95%
Relief from Abuse/Neglect/Exploitation	23	22	1	96%
Registration of Foreign Order	10	4	8	40%
Separation	0	0	0	
UIFSA	24	5	26	21%
Total	1784	1786	713	100%

Probate Division	Incoming	Outgoing	Pending End of Year Active	Clearance Rate
Adoption	106	106	16	100%
Adult	15	12	5	80%
Conversion	0	0	0	
Minor- Agency	74	71	4	96%
Minor- Private	16	22	6	138%
Surrender & Relinquishment	1	1	1	
Estate	424	384	837	91%
Guardianship Adult	75	94	29	125%
Involuntary	75	73	26	97%
Voluntary	18	21	3	117%
Guardianship Minor	48	38	27	79%
Custodial	34	24	16	71%
Financial	9	7	10	78%
Permanent	3	5	0	167%
Vulnerable Noncitizen Child	2	2	1	
Misc. Probate	13	12	8	92%
Trust	12	18	18	150%
Total	696	652	935	94%
Administrative Matters	1136	1149	84	101%

ESSEX

Civil Division	Incoming	Outgoing	Pending End of Year Active	Clearance Rate
Appeal	0	1	0	
Claim Against Government	1	1	0	100%
Collection	15	12	9	80%
Contract	1	0	1	
Declaratory Relief	1	2	1	200%
Employment	0	0	0	
Foreclosure	7	11	5	157%
Landlord/Tenant	18	19	5	106%
Abandoned Property	0	0	0	
Eviction	18	19	5	106%
Other	0	0	0	
Miscellaneous Civil	0	4	1	
Prisoner	9	10	2	111%
Real Property	2	1	2	50%
Small Claims	22	23	9	105%
Stalking	13	21	1	162%
Sexual Assault	1	1	0	100%
Sexual Assault on behalf of Minor	0	0	0	
Stalking	9	17	1	189%
Stalking on behalf of Minor	3	3	0	100%
Tort	2	4	4	200%
Total	91	109	40	120%

Criminal Division	Incoming	Outgoing	Pending End of Year Active	Clearance Rate
Civil Miscellaneous	11	6	8	55%
Civil Suspension	7	5	6	71%
Felony	75	59	101	79%
Domestic Violence	7	6	12	86%
Drugs	7	4	7	57%
Elder Abuse	0	0	0	
Motor Vehicle-DWI/DUI	0	1	0	
Motor Vehicle-Other	1	1	3	100%
Other	0	0	0	
Person	12	9	23	75%
Property	36	27	40	75%
Protection Order Violation	0	0	0	
Public Order	11	10	16	91%
Weapons	1	1	0	
Fish and Game	2	3	1	150%
Judicial Bureau Appeal	0	1	0	
Miscellaneous (Criminal)	0	0	4	
Misdemeanor	127	142	119	112%
Domestic Violence	12	18	8	150%
Drugs	4	3	8	75%
Elder Abuse	0	0	0	
Motor Vehicle-DWI/DUI	21	21	16	100%
Motor Vehicle-Other	31	37	23	119%
Other	0	0	0	
Person	9	9	7	100%
Property	21	23	10	110%
Protection Order Violation	2	3	6	150%
Public Order	27	28	41	104%
Weapons	0	0	0	
Uniform Fire Prevention Ticket	0	0	0	
Total	222	216	239	97%
Investigative Requests	29	28	1	97%

Family Division	Incoming	Outgoing	Pending End of Year Active	Clearance Rate
Annulment	0	0	0	
Desertion	0	0	0	
Dissolution with Children	5	7	10	140%
Dissolution without Children	14	15	7	107%
Juvenile	16	23	8	144%
CHINS A- Abandoned or Abused	0	1	0	
CHINS B- Neglect	4	14	1	350%
CHINS C- Beyond Control	1	0	1	0%
CHINS D- Truant	1	1	0	100%
Delinquency	5	4	2	80%
Vulnerable Noncitizen Child	0	0	0	
Youthful Offender	5	3	4	60%
Mental Health	2	2	0	100%
Continued Treatment	1	1	0	100%
Involuntary Medication	0	0	0	
Involuntary Treatment	0	0	0	
Warrant for Emergency Exam	1	1	0	100%
Misc. Family	1	1	0	100%
Parentage	6	4	8	67%
Protection Order	35	38	43	109%
Extreme Risk Protection Order	0	0	0	
Registration of Foreign Abuse Prevention	0	0	0	
Relief from Abuse	30	34	1	113%
Relief from Abuse on behalf of a Minor	5	4	1	80%
Relief from Abuse/Neglect/Exploitation	0	0	0	
Registration of Foreign Order	1	1	1	100%
Separation	0	0	0	
UIFSA	0	0	0	
Total	80	91	36	114%

Probate Division	Incoming	Outgoing	Pending End of Year Active	Clearance Rate
Adoption	0	1	1	
Adult	0	1	0	
Conversion	0	0	1	
Minor- Agency	0	0	0	
Minor- Private	0	0	0	
Surrender & Relinquishment	0	0	0	
Estate	32	31	166	97%
Guardianship Adult	5	3	7	60%
Involuntary	5	2	5	40%
Voluntary	1	1	2	100%
Guardianship Minor	10	8	9	80%
Custodial	10	8	9	80%
Financial	0	0	0	
Permanent	0	0	0	
Vulnerable Noncitizen Child	0	0	0	
Misc. Probate	0	0	1	
Trust	1	0	5	
Total	49	43	189	88%
Administrative Matters	25	28	5	112%

FRANKLIN

Civil Division	Incoming	Outgoing	Pending End of Year Active	Clearance Rate
Appeal	8	9	3	113%
Claim Against Government	0	0	0	
Collection	92	96	29	104%
Contract	9	7	14	78%
Declaratory Relief	7	11	8	157%
Employment	0	2	3	
Foreclosure	61	51	52	84%
Landlord/Tenant	151	153	49	101%
Abandoned Property	2	0	2	0%
Eviction	147	149	47	101%
Other	2	4	0	200%
Miscellaneous Civil	11	16	5	145%
Prisoner	30	50	14	167%
Real Property	2	5	5	250%
Small Claims	170	208	48	122%
Stalking	170	177	7	104%
Sexual Assault	1	0	1	
Sexual Assault on behalf of Minor	0	0	0	
Stalking	147	154	6	105%
Stalking on behalf of Minor	22	23	0	105%
Tort	19	29	24	153%
Total	730	814	261	112%

Criminal Division	Incoming	Outgoing	Pending End of Year Active	Clearance Rate
Civil Miscellaneous	23	20	14	87%
Civil Suspension	45	68	34	151%
Felony	501	503	302	100%
Domestic Violence	55	58	23	105%
Drugs	60	66	31	110%
Elder Abuse	0	0	1	
Motor Vehicle-DWI/DUI	23	25	15	109%
Motor Vehicle-Other	25	31	14	124%
Other	1	0	1	0%
Person	123	101	122	82%
Property	185	186	80	101%
Protection Order Violation	5	6	3	120%
Public Order	21	28	10	133%
Weapons	3	2	2	67%
Fish and Game	19	20	8	105%
Judicial Bureau Appeal	0	0	0	
Miscellaneous (Criminal)	0	0	1	
Misdemeanor	1537	1506	773	98%
Domestic Violence	52	47	24	90%
Drugs	70	64	31	91%
Elder Abuse	0	1	0	
Motor Vehicle-DWI/DUI	127	165	77	130%
Motor Vehicle-Other	368	387	176	105%
Other	1	1	0	100%
Person	92	105	65	114%
Property	452	369	230	82%
Protection Order Violation	53	47	18	89%
Public Order	319	317	149	99%
Weapons	3	3	3	100%
Uniform Fire Prevention Ticket	0	0	0	
Total	2125	2117	1132	100%
Investigative Requests	212	217	6	102%

Family Division	Incoming	Outgoing	Pending End of Year Active	Clearance Rate
Annulment	0	0	0	
Desertion	0	0	0	
Dissolution with Children	73	44	96	60%
Dissolution without Children	89	76	67	85%
Juvenile	178	159	216	89%
CHINS A- Abandoned or Abused	0	4	0	
CHINS B- Neglect	57	30	78	53%
CHINS C- Beyond Control	5	6	6	120%
CHINS D- Truant	7	15	10	214%
Delinquency	87	77	86	89%
Vulnerable Noncitizen Child	0	0	0	
Youthful Offender	22	27	36	123%
Mental Health	34	29	6	85%
Continued Treatment	21	16	5	76%
Involuntary Medication	0	0	0	
Involuntary Treatment	7	7	1	100%
Warrant for Emergency Exam	6	6	0	100%
Misc. Family	9	5	6	56%
Parentage	78	57	98	73%
Protection Order	323	186	43	58%
Extreme Risk Protection Order	1	1	1	100%
Registration of Foreign Abuse Prevention	0	0	0	
Relief from Abuse	257	149	133	58%
Relief from Abuse on behalf of a Minor	55	30	29	55%
Relief from Abuse/Neglect/Exploitation	10	6	4	60%
Registration of Foreign Order	2	0	3	0%
Separation	0	0	0	
UIFSA	8	5	7	63%
Total	794	561	666	71%

Probate Division	Incoming	Outgoing	Pending End of Year Active	Clearance Rate
Adoption	35	35	8	100%
Adult	6	5	1	83%
Conversion	0	0	0	
Minor- Agency	24	27	1	113%
Minor- Private	5	3	6	60%
Surrender & Relinquishment	0	0	0	
Estate	183	154	386	84%
Guardianship Adult	28	24	47	86%
Involuntary	20	19	31	95%
Voluntary	8	5	16	63%
Guardianship Minor	39	29	53	74%
Custodial	24	20	36	83%
Financial	10	4	13	40%
Permanent	1	1	4	100%
Vulnerable Noncitizen Child	4	4	0	100%
Misc. Probate	1	2	0	200%
Trust	3	0	5	
Total	289	244	499	84%
Administrative Matters	196	193	10	98%

GRAND ISLE

Civil Division	Incoming	Outgoing	Pending End of Year Active	Clearance Rate
Appeal	2	1	2	50%
Claim Against Government	0	0	0	
Collection	15	22	13	147%
Contract	1	6	6	600%
Declaratory Relief	5	5	4	100%
Employment	0	0	0	
Foreclosure	17	18	14	106%
Landlord/Tenant	20	24	10	120%
Abandoned Property	0	0	0	
Eviction	19	24	9	126%
Other	1	0	1	0%
Miscellaneous Civil	2	1	1	50%
Prisoner	0	0	1	
Real Property	0	0	1	
Small Claims	21	24	27	114%
Stalking	21	20	1	95%
Sexual Assault	0	0	0	
Sexual Assault on behalf of Minor	0	0	0	
Stalking	21	20	1	95%
Stalking on behalf of Minor	0	0	0	
Tort	3	2	4	67%
Total	107	123	84	115%

Criminal Division	Incoming	Outgoing	Pending End of Year Active	Clearance Rate
Civil Miscellaneous	1	3	7	300%
Civil Suspension	6	9	4	150%
Felony	25	31	16	124%
Domestic Violence	1	6	1	600%
Drugs	4	5	4	125%
Elder Abuse	0	0	0	
Motor Vehicle-DWI/DUI	3	3	1	100%
Motor Vehicle-Other	0	0	0	
Other	0	0	0	
Person	3	4	4	133%
Property	12	11	5	92%
Protection Order Violation	0	0	0	
Public Order	2	2	1	100%
Weapons	0	0	0	
Fish and Game	6	5	2	83%
Judicial Bureau Appeal	0	1	0	
Miscellaneous (Criminal)	0	0	4	
Misdemeanor	103	120	44	117%
Domestic Violence	9	11	4	122%
Drugs	0	1	1	
Elder Abuse	0	0	0	
Motor Vehicle-DWI/DUI	10	15	4	150%
Motor Vehicle-Other	39	40	19	103%
Other	3	3	0	100%
Person	8	12	5	150%
Property	10	13	2	130%
Protection Order Violation	5	4	1	80%
Public Order	19	21	8	111%
Weapons	0	0	0	
Uniform Fire Prevention Ticket	0	0	0	
Total	141	169	77	120%
Investigative Requests	18	22	0	122%

Family Division	Incoming	Outgoing	Pending End of Year Active	Clearance Rate
Annulment	0	0	0	
Desertion	0	0	0	
Dissolution with Children	15	10	14	67%
Dissolution without Children	16	15	7	94%
Juvenile	18	17	26	94%
CHINS A- Abandoned or Abused	0	0	2	
CHINS B- Neglect	9	3	17	33%
CHINS C- Beyond Control	0	1	0	
CHINS D- Truant	2	3	3	150%
Delinquency	5	6	3	120%
Vulnerable Noncitizen Child	0	0	0	
Youthful Offender	2	4	1	200%
Mental Health	1	1	0	100%
Continued Treatment	1	1	0	100%
Involuntary Medication	0	0	0	
Involuntary Treatment	0	0	0	
Warrant for Emergency Exam	0	0	0	
Misc. Family	0	0	0	
Parentage	11	10	10	91%
Protection Order	35	30	43	86%
Extreme Risk Protection Order	1	1	0	100%
Registration of Foreign Abuse Prevention	0	0	0	
Relief from Abuse	32	27	6	84%
Relief from Abuse on behalf of a Minor	2	2	0	100%
Relief from Abuse/Neglect/Exploitation	0	0	0	
Registration of Foreign Order	0	1	0	
Separation	0	0	0	
UIFSA	1	1	1	100%
Total	97	85	64	88%

Probate Division	Incoming	Outgoing	Pending End of Year Active	Clearance Rate
Adoption	8	6	2	75%
Adult	1	1	0	100%
Conversion	0	0	0	
Minor- Agency	7	5	2	71%
Minor- Private	0	0	0	
Surrender & Relinquishment	0	0	0	
Estate	35	53	71	151%
Guardianship Adult	3	4	6	133%
Involuntary	3	4	6	133%
Voluntary	0	0	0	
Guardianship Minor	2	4	3	200%
Custodial	2	3	1	150%
Financial	0	0	0	
Permanent	0	1	2	
Vulnerable Noncitizen Child	0	0	0	
Misc. Probate	0	0	0	
Trust	0	1	2	
Total	48	68	84	142%
Administrative Matters	81	79	5	98%

LAMOILLE

Civil Division	Incoming	Outgoing	Pending End of Year Active	Clearance Rate
Appeal	3	5	2	167%
Claim Against Government	3	1	2	33%
Collection	51	48	22	94%
Contract	9	16	10	178%
Declaratory Relief	4	9	3	225%
Employment	0	0	0	
Foreclosure	29	45	23	155%
Landlord/Tenant	59	65	21	110%
Abandoned Property	2	2	0	100%
Eviction	56	63	20	113%
Other	1	0	1	0%
Miscellaneous Civil	7	6	10	86%
Prisoner	1	1	1	100%
Real Property	6	4	4	67%
Small Claims	69	109	32	158%
Stalking	49	48	2	98%
Sexual Assault	2	2	0	100%
Sexual Assault on behalf of Minor	0	0	0	
Stalking	46	46	1	100%
Stalking on behalf of Minor	1	0	1	
Tort	11	16	23	145%
Total	301	373	155	124%

Criminal Division	Incoming	Outgoing	Pending End of Year Active	Clearance Rate
Civil Miscellaneous	5	5	5	100%
Civil Suspension	71	123	35	173%
Felony	273	329	165	121%
Domestic Violence	37	45	23	122%
Drugs	30	35	13	117%
Elder Abuse	0	0	0	
Motor Vehicle-DWI/DUI	31	50	14	161%
Motor Vehicle-Other	25	26	8	104%
Other	1	1	0	100%
Person	41	57	47	139%
Property	89	95	47	107%
Protection Order Violation	9	6	4	67%
Public Order	10	14	9	140%
Weapons	0	0	0	
Fish and Game	9	13	4	144%
Judicial Bureau Appeal	1	1	0	100%
Miscellaneous (Criminal)	0	0	0	
Misdemeanor	796	1006	369	126%
Domestic Violence	27	29	18	107%
Drugs	52	55	24	106%
Elder Abuse	0	0	0	
Motor Vehicle-DWI/DUI	158	219	70	139%
Motor Vehicle-Other	182	197	94	108%
Other	7	9	0	129%
Person	35	44	23	126%
Property	176	222	65	126%
Protection Order Violation	18	37	6	206%
Public Order	141	192	69	136%
Weapons	0	2	0	
Uniform Fire Prevention Ticket	0	0	0	
Total	1155	1477	578	128%
Investigative Requests	128	132	11	103%

Family Division	Incoming	Outgoing	Pending End of Year Active	Clearance Rate
Annulment	0	1	0	
Desertion	0	0	0	
Dissolution with Children	33	41	21	124%
Dissolution without Children	55	57	15	104%
Juvenile	71	115	53	162%
CHINS A- Abandoned or Abused	2	4	1	200%
CHINS B- Neglect	25	55	19	220%
CHINS C- Beyond Control	3	2	2	67%
CHINS D- Truant	13	12	11	92%
Delinquency	27	35	19	130%
Vulnerable Noncitizen Child	0	0	0	
Youthful Offender	1	7	1	700%
Mental Health	26	27	3	104%
Continued Treatment	8	9	2	113%
Involuntary Medication	0	0	0	
Involuntary Treatment	7	7	1	100%
Warrant for Emergency Exam	11	11	0	100%
Misc. Family	3	2	3	67%
Parentage	26	36	14	138%
Protection Order	163	155	16	95%
Extreme Risk Protection Order	2	2	0	100%
Registration of Foreign Abuse Prevention	0	0	0	
Relief from Abuse	146	135	16	92%
Relief from Abuse on behalf of a Minor	12	13	0	108%
Relief from Abuse/Neglect/Exploitation	3	5	0	167%
Registration of Foreign Order	0	2	0	
Separation	0	0	0	
UIFSA	2	2	0	100%
Total	379	438	125	116%

Probate Division	Incoming	Outgoing	Pending End of Year Active	Clearance Rate
Adoption	4	2	4	50%
Adult	0	0	0	
Conversion	0	0	0	
Minor- Agency	0	0	0	
Minor- Private	4	2	4	50%
Surrender & Relinquishment	0	0	0	
Estate	108	97	174	90%
Guardianship Adult	11	9	5	82%
Involuntary	10	8	5	80%
Voluntary	1	1	0	100%
Guardianship Minor	7	7	1	100%
Custodial	3	3	1	100%
Financial	3	3	0	100%
Permanent	1	1	0	100%
Vulnerable Noncitizen Child	0	0	0	
Misc. Probate	0	0	0	
Trust	3	1	2	33%
Total	133	116	186	87%
Administrative Matters	150	155	5	103%

ORANGE

Civil Division	Incoming	Outgoing	Pending End of Year Active	Clearance Rate
Appeal	4	2	3	50%
Claim Against Government	1	1	0	100%
Collection	50	52	25	104%
Contract	6	5	8	83%
Declaratory Relief	1	4	3	400%
Employment	1	0	1	0%
Foreclosure	32	23	27	72%
Landlord/Tenant	62	62	28	100%
Abandoned Property	0	2	0	
Eviction	62	60	28	97%
Other	0	0	0	
Miscellaneous Civil	5	3	5	60%
Prisoner	3	2	2	67%
Real Property	5	3	7	60%
Small Claims	89	129	38	145%
Stalking	56	56	3	100%
Sexual Assault	1	2	0	200%
Sexual Assault on behalf of Minor	3	3	0	100%
Stalking	45	45	2	100%
Stalking on behalf of Minor	7	6	1	86%
Tort	10	12	14	120%
Total	325	354	164	109%

Criminal Division	Incoming	Outgoing	Pending End of Year Active	Clearance Rate
Civil Miscellaneous	17	17	5	100%
Civil Suspension	32	35	19	109%
Felony	185	192	104	104%
Domestic Violence	15	20	9	133%
Drugs	20	18	13	90%
Elder Abuse	0	0	0	
Motor Vehicle-DWI/DUI	11	18	4	164%
Motor Vehicle-Other	13	12	6	92%
Other	0	0	0	
Person	37	44	24	119%
Property	75	65	41	87%
Protection Order Violation	3	3	2	100%
Public Order	11	12	5	109%
Weapons	0	0	0	
Fish and Game	5	5	1	100%
Judicial Bureau Appeal	0	1	0	
Miscellaneous (Criminal)	0	0	16	
Misdemeanor	493	517	231	105%
Domestic Violence	41	46	14	112%
Drugs	32	29	11	91%
Elder Abuse	0	0	0	
Motor Vehicle-DWI/DUI	80	90	39	113%
Motor Vehicle-Other	117	129	49	110%
Other	0	0	2	
Person	33	32	18	97%
Property	72	68	36	94%
Protection Order Violation	13	14	10	108%
Public Order	105	108	52	103%
Weapons	0	1	0	
Uniform Fire Prevention Ticket	0	0	0	
Total	732	767	376	105%
Investigative Requests	99	101	3	102%

Family Division	Incoming	Outgoing	Pending End of Year Active	Clearance Rate
Annulment	0	0	0	
Desertion	0	0	0	
Dissolution with Children	43	54	41	126%
Dissolution without Children	43	55	15	128%
Juvenile	59	39	37	66%
CHINS A- Abandoned or Abused	0	0	0	
CHINS B- Neglect	7	3	4	43%
CHINS C- Beyond Control	2	1	1	50%
CHINS D- Truant	7	7	5	100%
Delinquency	32	20	21	63%
Vulnerable Noncitizen Child	0	0	0	
Youthful Offender	11	8	6	73%
Mental Health	13	14	0	108%
Continued Treatment	10	11	0	110%
Involuntary Medication	0	0	0	
Involuntary Treatment	0	0	0	
Warrant for Emergency Exam	3	3	0	100%
Misc. Family	4	4	1	100%
Parentage	26	35	25	135%
Protection Order	166	162	11	98%
Extreme Risk Protection Order	1	1	0	100%
Registration of Foreign Abuse Prevention	0	0	0	
Relief from Abuse	133	129	9	97%
Relief from Abuse on behalf of a Minor	30	30	2	100%
Relief from Abuse/Neglect/Exploitation	2	2	0	100%
Registration of Foreign Order	2	5	1	250%
Separation	0	0	0	
UIFSA	6	3	4	50%
Total	362	371	135	102%

Probate Division	Incoming	Outgoing	Pending End of Year Active	Clearance Rate
Adoption	5	6	4	120%
Adult	0	2	0	
Conversion	0	0	0	
Minor- Agency	4	2	2	50%
Minor- Private	1	2	2	200%
Surrender & Relinquishment	0	0	0	
Estate	107	142	335	133%
Guardianship Adult	17	15	13	88%
Involuntary	10	11	9	110%
Voluntary	7	4	4	57%
Guardianship Minor	11	12	16	109%
Custodial	8	9	13	113%
Financial	3	3	2	100%
Permanent	0	0	1	
Vulnerable Noncitizen Child	0	0	0	
Misc. Probate	0	0	1	
Trust	1	4	18	400%
Total	141	179	387	127%
Administrative Matters	161	160	18	99%

ORLEANS

Civil Division	Incoming	Outgoing	Pending End of Year Active	Clearance Rate
Appeal	31	26	14	84%
Claim Against Government	0	1	2	
Collection	54	52	26	96%
Contract	13	26	6	200%
Declaratory Relief	3	4	2	133%
Employment	1	2	0	200%
Foreclosure	20	28	23	140%
Landlord/Tenant	57	57	31	100%
Abandoned Property	0	0	0	
Eviction	57	57	31	100%
Other	0	0	0	
Miscellaneous Civil	8	15	4	188%
Prisoner	97	111	63	114%
Real Property	0	4	4	
Small Claims	113	143	42	127%
Stalking	54	52	13	96%
Sexual Assault	0	0	1	
Sexual Assault on behalf of Minor	0	1	1	
Stalking	51	48	11	94%
Stalking on behalf of Minor	3	3	0	100%
Tort	22	31	33	141%
Total	473	552	263	117%

Criminal Division	Incoming	Outgoing	Pending End of Year Active	Clearance Rate
Civil Miscellaneous	15	13	25	87%
Civil Suspension	23	30	50	130%
Felony	327	430	439	131%
Domestic Violence	43	47	61	109%
Drugs	17	35	23	206%
Elder Abuse	0	0	0	
Motor Vehicle-DWI/DUI	18	26	23	144%
Motor Vehicle-Other	22	28	25	127%
Other	3	5	1	167%
Person	82	125	133	152%
Property	95	102	118	107%
Protection Order Violation	3	3	7	100%
Public Order	43	57	48	133%
Weapons	1	2	0	200%
Fish and Game	14	16	13	114%
Judicial Bureau Appeal	0	1	0	
Miscellaneous (Criminal)	0	0	0	
Misdemeanor	980	1116	908	114%
Domestic Violence	34	37	59	109%
Drugs	45	30	39	67%
Elder Abuse	0	0	0	
Motor Vehicle-DWI/DUI	90	95	110	106%
Motor Vehicle-Other	232	283	162	122%
Other	17	19	2	112%
Person	47	47	64	100%
Property	207	232	150	112%
Protection Order Violation	16	16	27	100%
Public Order	291	356	294	122%
Weapons	1	1	1	100%
Uniform Fire Prevention Ticket	0	0	0	
Total	1359	1606	1435	118%
Investigative Requests	177	182	3	103%

Family Division	Incoming	Outgoing	Pending End of Year Active	Clearance Rate
Annulment	0	0	0	
Desertion	0	0	0	
Dissolution with Children	45	46	45	102%
Dissolution without Children	54	57	31	106%
Juvenile	116	158	93	136%
CHINS A- Abandoned or Abused	10	17	10	170%
CHINS B- Neglect	16	52	17	325%
CHINS C- Beyond Control	3	4	2	133%
CHINS D- Truant	0	1	0	
Delinquency	66	63	49	95%
Vulnerable Noncitizen Child	0	0	0	
Youthful Offender	21	21	15	100%
Mental Health	35	34	2	97%
Continued Treatment	5	4	2	80%
Involuntary Medication	0	0	0	
Involuntary Treatment	5	5	0	100%
Warrant for Emergency Exam	25	25	0	100%
Misc. Family	4	3	2	75%
Parentage	47	40	42	85%
Protection Order	191	197	11	103%
Extreme Risk Protection Order	5	6	0	120%
Registration of Foreign Abuse Prevention	0	0	0	
Relief from Abuse	148	156	6	105%
Relief from Abuse on behalf of a Minor	37	34	5	92%
Relief from Abuse/Neglect/Exploitation	1	1	0	100%
Registration of Foreign Order	1	1	2	100%
Separation	0	0	0	
UIFSA	6	3	4	50%
Total	499	539	232	108%

Probate Division	Incoming	Outgoing	Pending End of Year Active	Clearance Rate
Adoption	15	19	8	127%
Adult	2	3	0	150%
Conversion	0	0	0	
Minor- Agency	13	14	2	108%
Minor- Private	0	2	6	
Surrender & Relinquishment	0	0	0	
Estate	126	169	264	134%
Guardianship Adult	28	42	37	150%
Involuntary	21	37	29	176%
Voluntary	7	5	8	71%
Guardianship Minor	30	37	31	123%
Custodial	16	28	18	175%
Financial	12	8	10	67%
Permanent	2	1	3	50%
Vulnerable Noncitizen Child	0	0	0	
Misc. Probate	1	0	2	
Trust	0	2	15	
Total	200	269	357	135%
Administrative Matters	121	112	16	93%

RUTLAND

Civil Division	Incoming	Outgoing	Pending End of Year Active	Clearance Rate
Appeal	27	19	16	70%
Claim Against Government	0	0	0	
Collection	126	110	58	87%
Contract	16	18	14	113%
Declaratory Relief	7	3	7	43%
Employment	1	1	5	100%
Foreclosure	64	56	54	88%
Landlord/Tenant	244	260	83	107%
Abandoned Property	2	1	1	50%
Eviction	239	256	79	107%
Other	3	3	3	100%
Miscellaneous Civil	21	30	10	143%
Prisoner	37	37	22	100%
Real Property	8	2	8	25%
Small Claims	209	218	89	104%
Stalking	144	139	15	97%
Sexual Assault	1	2	0	200%
Sexual Assault on behalf of Minor	1	0	1	
Stalking	135	127	14	94%
Stalking on behalf of Minor	7	10	0	143%
Tort	38	44	49	116%
Total	942	937	430	99%

Criminal Division	Incoming	Outgoing	Pending End of Year Active	Clearance Rate
Civil Miscellaneous	32	28	11	88%
Civil Suspension	113	138	58	122%
Felony	659	780	504	118%
Domestic Violence	126	146	64	116%
Drugs	86	84	58	98%
Elder Abuse	0	0	0	
Motor Vehicle-DWI/DUI	36	33	30	92%
Motor Vehicle-Other	42	48	26	114%
Other	1	1	0	100%
Person	175	215	174	123%
Property	159	206	126	130%
Protection Order Violation	4	18	5	450%
Public Order	29	27	21	93%
Weapons	1	2	0	200%
Fish and Game	21	27	110	129%
Judicial Bureau Appeal	5	6	3	120%
Miscellaneous (Criminal)	0	0	60	
Misdemeanor	1662	2192	993	132%
Domestic Violence	105	164	73	156%
Drugs	97	69	60	71%
Elder Abuse	0	0	0	
Motor Vehicle-DWI/DUI	212	324	110	153%
Motor Vehicle-Other	387	439	183	113%
Other	2	3	2	150%
Person	106	156	104	147%
Property	506	659	251	130%
Protection Order Violation	36	61	38	169%
Public Order	209	315	171	151%
Weapons	2	2	1	100%
Uniform Fire Prevention Ticket	0	0	0	
Total	2492	3171	1739	127%
Investigative Requests	286	298	9	104%

Family Division	Incoming	Outgoing	Pending End of Year Active	Clearance Rate
Annulment	0	0	0	
Desertion	0	0	0	
Dissolution with Children	86	67	96	78%
Dissolution without Children	122	108	57	89%
Juvenile	169	182	92	108%
CHINS A- Abandoned or Abused	3	2	2	67%
CHINS B- Neglect	36	52	15	144%
CHINS C- Beyond Control	3	7	1	233%
CHINS D- Truant	34	28	16	82%
Delinquency	76	80	48	105%
Vulnerable Noncitizen Child	0	0	0	
Youthful Offender	17	13	10	76%
Mental Health	142	142	11	100%
Continued Treatment	22	23	2	105%
Involuntary Medication	14	14	0	100%
Involuntary Treatment	76	75	8	99%
Warrant for Emergency Exam	30	30	1	100%
Misc. Family	4	3	2	75%
Parentage	122	94	91	77%
Protection Order	488	467	43	96%
Extreme Risk Protection Order	5	5	0	100%
Registration of Foreign Abuse Prevention	0	0	0	
Relief from Abuse	426	406	37	95%
Relief from Abuse on behalf of a Minor	44	43	5	98%
Relief from Abuse/Neglect/Exploitation	13	13	1	100%
Registration of Foreign Order	3	1	2	33%
Separation	0	0	0	
UIFSA	16	12	10	75%
Total	1152	1076	404	93%

Probate Division	Incoming	Outgoing	Pending End of Year Active	Clearance Rate
Adoption	38	49	7	129%
Adult	9	11	0	122%
Conversion	0	0	0	
Minor- Agency	22	22	2	100%
Minor- Private	5	16	3	320%
Surrender & Relinquishment	2	0	2	
Estate	324	341	523	105%
Guardianship Adult	74	69	15	93%
Involuntary	58	54	13	93%
Voluntary	16	15	2	94%
Guardianship Minor	41	44	10	107%
Custodial	36	39	8	108%
Financial	4	4	2	100%
Permanent	1	1	0	100%
Vulnerable Noncitizen Child	0	0	0	
Misc. Probate	11	8	4	73%
Trust	0	4	1	
Total	488	515	560	106%
Administrative Matters	534	533	25	100%

WASHINGTON

Civil Division	Incoming	Outgoing	Pending End of Year Active	Clearance Rate
Appeal	20	19	12	95%
Claim Against Government	9	6	10	67%
Collection	107	112	39	105%
Contract	18	11	22	61%
Declaratory Relief	8	5	12	63%
Employment	4	0	5	0%
Foreclosure	51	41	57	80%
Landlord/Tenant	141	139	54	99%
Abandoned Property	2	2	0	100%
Eviction	137	134	52	98%
Other	2	3	2	150%
Miscellaneous Civil	41	35	30	85%
Prisoner	75	73	77	97%
Real Property	0	3	2	
Small Claims	191	218	101	114%
Stalking	93	91	6	98%
Sexual Assault	2	2	0	100%
Sexual Assault on behalf of Minor	1	1	0	100%
Stalking	88	86	6	98%
Stalking on behalf of Minor	2	2	0	100%
Tort	24	36	42	150%
Total	782	789	469	101%

Criminal Division	Incoming	Outgoing	Pending End of Year Active	Clearance Rate
Civil Miscellaneous	27	25	17	93%
Civil Suspension	84	103	36	123%
Felony	641	640	336	100%
Domestic Violence	77	76	36	99%
Drugs	120	122	53	102%
Elder Abuse	0	0	0	
Motor Vehicle-DWI/DUI	35	46	11	131%
Motor Vehicle-Other	41	45	17	110%
Other	1	1	1	100%
Person	132	135	100	102%
Property	167	151	88	90%
Protection Order Violation	3	6	1	200%
Public Order	60	54	27	90%
Weapons	5	4	2	80%
Fish and Game	14	14	18	100%
Judicial Bureau Appeal	1	7	0	700%
Miscellaneous (Criminal)	0	0	39	
Misdemeanor	1785	1932	821	108%
Domestic Violence	66	85	28	129%
Drugs	113	134	44	119%
Elder Abuse	0	1	0	
Motor Vehicle-DWI/DUI	172	215	68	125%
Motor Vehicle-Other	308	337	186	109%
Other	7	8	0	114%
Person	192	202	75	105%
Property	510	437	217	86%
Protection Order Violation	43	54	21	126%
Public Order	371	452	181	122%
Weapons	3	7	1	233%
Uniform Fire Prevention Ticket	0	0	0	
Total	2552	2721	1267	107%
Investigative Requests	237	228	29	96%

Family Division	Incoming	Outgoing	Pending End of Year Active	Clearance Rate
Annulment	0	0	0	
Desertion	0	0	0	
Dissolution with Children	83	80	83	96%
Dissolution without Children	98	114	38	116%
Juvenile	185	183	135	99%
CHINS A- Abandoned or Abused	4	6	2	150%
CHINS B- Neglect	42	32	27	76%
CHINS C- Beyond Control	7	6	3	86%
CHINS D- Truant	9	8	8	89%
Delinquency	94	86	76	91%
Vulnerable Noncitizen Child	0	0	0	
Youthful Offender	29	45	19	155%
Mental Health	112	103	20	92%
Continued Treatment	25	21	8	84%
Involuntary Medication	18	18	0	100%
Involuntary Treatment	69	64	12	93%
Warrant for Emergency Exam	0	0	0	
Misc. Family	3	4	3	133%
Parentage	58	88	45	152%
Protection Order	355	359	14	101%
Extreme Risk Protection Order	3	2	1	67%
Registration of Foreign Abuse Prevention	0	0	0	
Relief from Abuse	305	308	11	101%
Relief from Abuse on behalf of a Minor	41	43	1	105%
Relief from Abuse/Neglect/Exploitation	6	6	1	100%
Registration of Foreign Order	2	3	3	150%
Separation	0	0	0	
UIFSA	9	4	7	44%
Total	905	938	348	104%

Probate Division	Incoming	Outgoing	Pending End of Year Active	Clearance Rate
Adoption	26	22	25	85%
Adult	5	6	4	120%
Conversion	0	0	0	
Minor- Agency	12	10	9	83%
Minor- Private	9	6	12	67%
Surrender & Relinquishment	0	0	0	
Estate	212	154	725	73%
Guardianship Adult	50	47	41	94%
Involuntary	40	36	32	90%
Voluntary	10	11	9	110%
Guardianship Minor	24	21	28	88%
Custodial	15	17	9	113%
Financial	6	4	12	67%
Permanent	3	0	7	0%
Vulnerable Noncitizen Child	0	0	0	
Misc. Probate	1	4	3	400%
Trust	6	5	30	83%
Total	319	253	852	79%
Administrative Matters	425	419	61	99%

WINDHAM

Civil Division	Incoming	Outgoing	Pending End of Year Active	Clearance Rate
Appeal	5	5	6	100%
Claim Against Government	3	2	5	67%
Collection	61	68	19	111%
Contract	17	14	16	82%
Declaratory Relief	5	7	4	140%
Employment	3	3	3	100%
Foreclosure	46	39	44	85%
Landlord/Tenant	180	188	78	104%
Abandoned Property	2	2	1	100%
Eviction	173	184	73	106%
Other	5	2	4	40%
Miscellaneous Civil	19	27	12	142%
Prisoner	29	22	23	76%
Real Property	4	4	7	100%
Small Claims	150	176	85	117%
Stalking	109	99	25	91%
Sexual Assault	1	1	0	100%
Sexual Assault on behalf of Minor	0	0	0	
Stalking	106	95	25	90%
Stalking on behalf of Minor	2	3	0	150%
Tort	32	31	52	97%
Total	663	685	379	103%

Criminal Division	Incoming	Outgoing	Pending End of Year Active	Clearance Rate
Civil Miscellaneous	40	15	81	38%
Civil Suspension	90	66	64	73%
Felony	510	492	410	96%
Domestic Violence	83	89	59	107%
Drugs	77	84	53	109%
Elder Abuse	0	0	0	
Motor Vehicle-DWI/DUI	35	32	29	91%
Motor Vehicle-Other	21	14	16	67%
Other	2	1	1	50%
Person	106	93	117	88%
Property	162	151	115	93%
Protection Order Violation	1	10	1	1000%
Public Order	22	18	18	82%
Weapons	1	0	1	0%
Fish and Game	6	5	5	83%
Judicial Bureau Appeal	3	3	4	
Miscellaneous (Criminal)	0	0	164	
Misdemeanor	1608	1573	1007	98%
Domestic Violence	71	82	68	115%
Drugs	121	103	74	85%
Elder Abuse	0	0	0	
Motor Vehicle-DWI/DUI	218	199	129	91%
Motor Vehicle-Other	210	210	92	100%
Other	2	2	0	100%
Person	135	140	94	104%
Property	421	423	246	100%
Protection Order Violation	27	35	21	130%
Public Order	400	373	283	93%
Weapons	3	6	0	200%
Uniform Fire Prevention Ticket	0	0	0	
Total	2257	2154	1735	95%
Investigative Requests	182	206	22	113%

Family Division	Incoming	Outgoing	Pending End of Year Active	Clearance Rate
Annulment	0	0	0	
Desertion	0	0	0	
Dissolution with Children	65	34	91	52%
Dissolution without Children	104	78	75	75%
Juvenile	114	102	51	89%
CHINS A- Abandoned or Abused	2	1	1	50%
CHINS B- Neglect	53	47	20	89%
CHINS C- Beyond Control	3	2	1	67%
CHINS D- Truant	5	8	2	160%
Delinquency	45	38	26	84%
Vulnerable Noncitizen Child	0	0	0	
Youthful Offender	6	6	1	100%
Mental Health	353	349	22	99%
Continued Treatment	23	23	4	100%
Involuntary Medication	44	43	3	98%
Involuntary Treatment	260	257	15	99%
Warrant for Emergency Exam	26	26	0	100%
Misc. Family	2	2	0	100%
Parentage	69	55	83	80%
Protection Order	241	225	43	93%
Extreme Risk Protection Order	0	0	0	
Registration of Foreign Abuse Prevention	0	0	0	
Relief from Abuse	210	197	19	94%
Relief from Abuse on behalf of a Minor	25	22	3	88%
Relief from Abuse/Neglect/Exploitation	6	6	0	100%
Registration of Foreign Order	2	2	1	100%
Separation	0	0	0	
UIFSA	6	3	8	50%
Total	956	850	353	89%

Probate Division	Incoming	Outgoing	Pending End of Year Active	Clearance Rate
Adoption	25	23	5	92%
Adult	3	1	2	33%
Conversion	0	0	0	
Minor- Agency	18	18	1	100%
Minor- Private	4	4	2	100%
Surrender & Relinquishment	0	0	0	
Estate	224	188	533	84%
Guardianship Adult	30	32	19	107%
Involuntary	24	26	14	108%
Voluntary	6	6	5	100%
Guardianship Minor	36	22	35	61%
Custodial	22	16	20	73%
Financial	9	6	10	67%
Permanent	5	0	5	0%
Vulnerable Noncitizen Child	0	0	0	
Misc. Probate	1	1	0	100%
Trust	2	0	5	
Total	318	266	597	84%
Administrative Matters	367	364	36	99%

WINDSOR

Civil Division	Incoming	Outgoing	Pending End of Year Active	Clearance Rate
Appeal	22	21	8	95%
Claim Against Government	0	3	1	
Collection	93	112	20	120%
Contract	23	16	21	70%
Declaratory Relief	10	4	11	40%
Employment	3	3	3	100%
Foreclosure	47	59	46	126%
Landlord/Tenant	163	183	49	112%
Abandoned Property	3	2	1	67%
Eviction	159	179	47	113%
Other	1	2	1	200%
Miscellaneous Civil	24	66	8	275%
Prisoner	97	91	26	94%
Real Property	4	13	5	325%
Small Claims	206	223	62	108%
Stalking	112	117	12	104%
Sexual Assault	3	2	1	67%
Sexual Assault on behalf of Minor	0	0	0	
Stalking	93	99	11	106%
Stalking on behalf of Minor	16	16	0	100%
Tort	39	51	48	131%
Total	843	962	320	114%

Criminal Division	Incoming	Outgoing	Pending End of Year Active	Clearance Rate
Civil Miscellaneous	83	85	22	102%
Civil Suspension	60	69	35	115%
Felony	491	499	281	102%
Domestic Violence	93	94	27	101%
Drugs	65	62	36	95%
Elder Abuse	0	0	0	
Motor Vehicle-DWI/DUI	26	34	15	131%
Motor Vehicle-Other	39	37	14	95%
Other	4	5	0	125%
Person	112	113	100	101%
Property	123	127	70	103%
Protection Order Violation	6	6	3	100%
Public Order	22	20	15	91%
Weapons	1	1	1	100%
Fish and Game	2	4	2	200%
Judicial Bureau Appeal	3	6	1	
Miscellaneous (Criminal)	0	1	74	
Misdemeanor	1155	1168	539	101%
Domestic Violence	87	92	37	106%
Drugs	89	88	39	99%
Elder Abuse	0	0	0	
Motor Vehicle-DWI/DUI	167	177	68	106%
Motor Vehicle-Other	275	291	139	106%
Other	13	14	1	108%
Person	97	95	51	98%
Property	183	177	74	97%
Protection Order Violation	25	23	16	92%
Public Order	216	210	112	97%
Weapons	3	1	2	33%
Uniform Fire Prevention Ticket	0	0	0	
Total	1794	1832	954	102%
Investigative Requests	151	164	4	109%

Family Division	Incoming	Outgoing	Pending End of Year Active	Clearance Rate
Annulment	0	0	0	
Desertion	0	0	0	
Dissolution with Children	85	57	88	67%
Dissolution without Children	85	90	31	106%
Juvenile	109	128	65	117%
CHINS A- Abandoned or Abused	2	4	1	200%
CHINS B- Neglect	19	22	14	116%
CHINS C- Beyond Control	2	3	1	150%
CHINS D- Truant	16	14	10	88%
Delinquency	49	60	31	122%
Vulnerable Noncitizen Child	0	0	0	
Youthful Offender	21	25	8	119%
Mental Health	21	19	3	90%
Continued Treatment	3	2	1	67%
Involuntary Medication	0	0	0	
Involuntary Treatment	8	7	2	88%
Warrant for Emergency Exam	10	10	0	100%
Misc. Family	5	4	2	80%
Parentage	51	57	50	112%
Protection Order	253	259	43	102%
Extreme Risk Protection Order	6	6	0	100%
Registration of Foreign Abuse Prevention	0	0	0	
Relief from Abuse	212	221	9	104%
Relief from Abuse on behalf of a Minor	33	30	3	91%
Relief from Abuse/Neglect/Exploitation	2	2	2	100%
Registration of Foreign Order	4	2	2	50%
Separation	0	0	0	
UIFSA	4	6	4	150%
Total	617	622	259	101%

Probate Division	Incoming	Outgoing	Pending End of Year Active	Clearance Rate
Adoption	29	25	12	86%
Adult	8	5	3	63%
Conversion	0	0	0	
Minor- Agency	17	14	4	82%
Minor- Private	4	6	5	150%
Surrender & Relinquishment	0	0	0	
Estate	273	396	531	145%
Guardianship Adult	39	32	28	82%
Involuntary	32	26	23	81%
Voluntary	7	6	5	86%
Guardianship Minor	39	27	28	69%
Custodial	19	17	17	89%
Financial	11	8	3	73%
Permanent	9	2	8	22%
Vulnerable Noncitizen Child	0	0	0	
Misc. Probate	2	1	2	50%
Trust	7	2	28	29%
Total	389	483	629	124%
Administrative Matters	266	259	27	97%

APPENDIX IV: CASE TYPES AND DISPOSITION GROUPS

CIVIL

Division	Enterprise Justice Case Type	Case Type	Disposition Group
Civil	Administrative Document	Administrative	No Disposition Group
Civil	Appeal of Decision on Access to Court Records	Administrative	No Disposition Group
Civil	Collection - Credit Card	Contract	Collection
Civil	Collection - Non-Credit Card	Contract	Collection
Civil	Collection - Other	Contract	Collection
Civil	Contract - Buyer Plaintiff	Contract	Contract
Civil	Contract - Other	Contract	Contract
Civil	Employment - Discrimination	Contract	Employment
Civil	Employment - Other	Contract	Employment
Civil	Employment - Wrongful Termination	Contract	Employment
Civil	Foreclosure - Non-Residential	Contract	Foreclosure
Civil	Foreclosure - Residential	Contract	Foreclosure
Civil	Landlord/Tenant - Abandoned Property	Contract	Landlord/Tenant
Civil	Landlord/Tenant - Eviction	Contract	Landlord/Tenant
Civil	Landlord/Tenant - Other	Contract	Landlord/Tenant
Civil	Tort - Fraud	Contract	Contract
Civil	Add Name to Voter Checklist	Other Civil	Miscellaneous (Civil)
Civil	Appeal - Administrative Agency	Other Civil	Appeal (Civil Division)
Civil	Appeal - Municipal	Other Civil	Appeal (Civil Division)
Civil	Appeal - Other	Other Civil	Appeal (Civil Division)
Civil	Appeal - Probate	Other Civil	Appeal (Civil Division)
Civil	Appeal - Professional Licensing Board	Other Civil	Appeal (Civil Division)
Civil	Appeal - Property Tax	Other Civil	Appeal (Civil Division)
Civil	Appeal - Small Claims	Other Civil	Appeal (Civil Division)
Civil	Appeal - Worker's Compensation	Other Civil	Appeal (Civil Division)
Civil	Claim Against Gov. - Access to Records	Other Civil	Claim Against Government
Civil	Claim Against Gov. - Election	Other Civil	Claim Against Government
Civil	Claim Against Gov. - Open Meeting	Other Civil	Claim Against Government

Civil	Claim Against Gov. - Other	Other Civil	Claim Against Government
Civil	Claim Against Gov. - Rule 75 (Non-Prisoner)	Other Civil	Claim Against Government
Civil	Collection - Restitution Unit	Other Civil	Collection
Civil	Collection - Tax	Other Civil	Collection
Civil	Conversion Default Civil	Other Civil	Miscellaneous (Civil)
Civil	Declaratory Judgment	Other Civil	Declaratory Relief
Civil	Enforcement Action by Government	Other Civil	Miscellaneous (Civil)
Civil	Foreign Subpoena	Other Civil	Miscellaneous (Civil)
Civil	Miscellaneous - Discovery	Other Civil	Miscellaneous (Civil)
Civil	Miscellaneous - Grand Jury	Other Civil	Miscellaneous (Civil)
Civil	Miscellaneous - Lottery	Other Civil	Miscellaneous (Civil)
Civil	Miscellaneous - Minor Settlement	Other Civil	Miscellaneous (Civil)
Civil	Miscellaneous - Other	Other Civil	Miscellaneous (Civil)
Civil	Miscellaneous - Structured Settlement	Other Civil	Miscellaneous (Civil)
Civil	Miscellaneous - Wrongful Death Settlement	Other Civil	Tort
Civil	Permission to File Pursuant to 15 VSA Sec 1185	Other Civil	Miscellaneous (Civil)
Civil	Prisoner Case - Habeas Corpus	Other Civil	Prisoner
Civil	Prisoner Case - Other	Other Civil	Prisoner
Civil	Prisoner Case - Post Conviction Relief	Other Civil	Prisoner
Civil	Prisoner Case - Review of Governmental Action	Other Civil	Prisoner
Civil	Restricting Abusive Litigation Pursuant to 15 VSA Sec 1182	Other Civil	Miscellaneous (Civil)
Civil	Sexual Assault	Other Civil	Stalking
Civil	Sexual Assault on Behalf of Minor	Other Civil	Stalking
Civil	Stalking	Other Civil	Stalking
Civil	Stalking on Behalf of Minor	Other Civil	Stalking
Civil	Stalking/Sexual Assault for Conversion	Other Civil	Stalking
Civil	Eminent Domain	Real Property	Contract
Civil	Partition	Real Property	Real Property
Civil	Real Property	Real Property	Real Property
Civil	Small Claims \$1,000 or less	Small Claims	Small Claims
Civil	Small Claims \$1,000 or less	Small Claims	Small Claims
Civil	Small Claims \$1,001 to \$10,000	Small Claims	Small Claims
Civil	Small Claims \$1,001 to \$5000	Small Claims	Small Claims
Civil	Small Claims Credit Debt \$1,000 or less	Small Claims	Small Claims

Civil	Small Claims Credit Debt \$1,001 to \$5,000	Small Claims	Small Claims
Civil	Small Claims for Conversion	Small Claims	Small Claims
Civil	Small Claims Medical Debt \$1,000 or less	Small Claims	Small Claims
Civil	Small Claims Medical Debt \$1,001 to \$5,000	Small Claims	Small Claims
Civil	Tort - Automobile	Tort	Tort
Civil	Tort - Intentional Tort	Tort	Tort
Civil	Tort - Malpractice Medical	Tort	Tort
Civil	Tort - Malpractice Other	Tort	Tort
Civil	Tort - Negligence	Tort	Tort
Civil	Tort - Other	Tort	Tort
Civil	Tort - Personal Injury	Tort	Tort
Civil	Tort - Product Liability	Tort	Tort
Civil	Tort - Slander/Libel/Defamation	Tort	Tort

Criminal

Division	Enterprise Justice Case Type	Case Type	Disposition Group
Criminal	Administrative Document	Administrative	No Disposition Group
Criminal	Uniform Fire Prevention Ticket	Miscellaneous	Uniform Fire Prevention Ticket
Criminal	Other - Conversion	Miscellaneous	Miscellaneous (Criminal)
Criminal	Ordinance	Ordinance violation	Miscellaneous (Criminal)
Criminal	Misdemeanor	Misdemeanor	Misdemeanor
Criminal	Miscellaneous - Criminal	Miscellaneous	Miscellaneous (Criminal)
Criminal	Judicial Bureau Appeal	Appeal from Limited Jurisdiction Court	Judicial Bureau Appeal
Criminal	Investigative Request	Administrative	No Disposition Group
Criminal	Fish and Game	Miscellaneous	Fish and Game
Criminal	Felony	Felony	Felony
Criminal	Conversion Default Traffic Ticket	Miscellaneous	Miscellaneous (Criminal)
Criminal	Conversion Default Fish and Game	Miscellaneous	Fish and Game
Criminal	Conversion Default Criminal	Miscellaneous	Miscellaneous (Criminal)
Criminal	Conversion Default Civil Suspension	Miscellaneous	Civil Suspension
Criminal	Conversion Default Civil Miscellaneous	Miscellaneous	Civil Miscellaneous
Criminal	Civil Suspension	Miscellaneous	Civil Suspension
Criminal	Civil Miscellaneous	Miscellaneous	Civil Miscellaneous
Criminal	Appeal of Decision on Access to Court Records	Administrative	No Disposition Group

Family

Family	Administrative Document	Administrative	No Disposition Group
Family	Administrative Document - Family Division	Administrative	No Disposition Group
Family	Annulment	Domestic Relations-Other	Annulment
Family	Appeal of Decision on Access to Court Records	Administrative	No Disposition Group
Family	Appeal to Family Division from Probate Division CHINS A - Abandoned or Abused by Parent/Guardian/Custodian	Other Civil	Miscellaneous (Family)
Family	CHINS B - Without Parental Care or Subsistence (Neglect)	CHINS	Juvenile
Family	CHINS C - Is Without or Beyond the Control of P/G/C	CHINS	Juvenile
Family	CHINS D - Habitually and Without Justification Truant	CHINS	Juvenile
Family	Civil Union Dissolution	Dissolution/Divorce	Dissolution without Children
Family	Civil Union Dissolution - Married Persons	Dissolution/Divorce	Dissolution without Children
Family	Conversion Default Family	Dissolution/Divorce	Miscellaneous (Family)
Family	Conversion Default Juvenile Cases	Juvenile - Other	Juvenile
Family	Conversion Domestic Cases	Administrative	No Disposition Group
Family	Conversion Mental Health	Other Civil	Mental Health
Family	Desertion	Domestic Relations-Other	Desertion
Family	Desertion Contested with Minor Children	Domestic Relations-Other	Desertion
Family	Desertion Contested with No Minor Children	Domestic Relations-Other	Desertion
Family	Desertion Stipulated with Minor Children	Domestic Relations-Other	Desertion
Family	Desertion Stipulated with No Minor Children	Domestic Relations-Other	Desertion
Family	Dissolution Civil Union Nonresident	Dissolution/Divorce	Dissolution without Children
Family	Dissolution Contested with Minor Children	Dissolution/Divorce	Dissolution with Children
Family	Dissolution Contested with No Minor Children	Dissolution/Divorce	Dissolution without Children
Family	Dissolution Stipulated with Minor Children	Dissolution/Divorce	Dissolution with Children
Family	Dissolution Stipulated with No Minor Children	Dissolution/Divorce	Dissolution without Children
Family	Divorce	Dissolution/Divorce	Dissolution without Children
Family	Extreme Risk Protection Order	Other Civil	Protection Order (Family)
Family	Generic Chins	CHINS	Juvenile
Family	Juvenile Delinquency	Delinquency	Juvenile
Family	JV - Appeal of Decision on Access to Court Records	Administrative	No Disposition Group

Family	MH - Appeal of Decision on Access to Court Records	Administrative	No Disposition Group
Family	MH-Act 248 Application for Judicial Review of Commitment	Other Civil	Miscellaneous (Family)
Family	MH-Application for Continued Treatment	Other Civil	Mental Health
Family	MH-Application for Involuntary Medication	Other Civil	Mental Health
Family	MH-Application for Involuntary Treatment	Other Civil	Mental Health
Family	MH-Guardianship for Developmentally Disabled Adult	Guardianship - Adult	Miscellaneous (Family)
Family	MH-Warrant for Emergency Exam	Other Civil	Mental Health
Family	Miscellaneous - Family	Domestic Relations-Other	Miscellaneous (Family)
Family	Miscellaneous - Juvenile	Juvenile - Other	Juvenile
Family	Parentage	Parentage	Parentage
Family	Parentage Contested	Parentage	Parentage
Family	Parentage Stipulated	Parentage	Parentage
Family	Permission to File Pursuant to 15 VSA Sec 1185	Domestic Relations-Other	Miscellaneous (Family)
Family	Registration of a Foreign Order	Domestic Relations-Other	Registration of a Foreign Order
Family	Registration of Foreign Abuse Prevention Order	Domestic Protection/Restraining Order	Protection Order (Family)
Family	Relief From Abuse	Domestic Protection/Restraining Order	Protection Order (Family)
Family	Relief from Abuse on Behalf of a Minor	Domestic Protection/Restraining Order	Protection Order (Family)
Family	Relief From Abuse/Neglect/Exploitation	Other Civil	Protection Order (Family)
Family	Restricting Abusive Litigation Pursuant to 15 VSA Sec 1182	Domestic Relations-Other	Miscellaneous (Family)
Family	Separation	Dissolution/Divorce	Separation
Family	Support	Domestic Relations-Other	Miscellaneous (Family)
Family	UIFSA	Domestic Relations-Other	UIFSA
Family	Vulnerable Noncitizen Child	CHINS	Juvenile
Family	Youthful Offender	Delinquency	Juvenile

Environmental

Environmental	Act 250 and ANR De Novo Appeals	Other Civil	Act 250 and ANR De Novo Appeals
Environmental	ANR & NRB Enforcement Actions	Other Civil	ANR & NRB Enforcement
Environmental	Civil Citation	Violation - other	Civil Citation
Environmental	Environmental Court Civil Case - Conversion	Other Civil	Miscellaneous (Environmental)
Environmental	Municipal De Novo Appeal	Other Civil	Municipal De Novo Appeal

Environmental Municipal Enforcement
 Environmental Municipal On the Record Appeal
 Environmental Other Jurisdiction

Other Civil
 Other Civil
 Other Civil

Municipal Enforcement
 On the Record Appeal
 Miscellaneous (Environmental)

Judicial Bureau

Division Enterprise Justice Case Type
 Judicial Bureau Fish and Wildlife
 Judicial Bureau Municipal Complaint
 Judicial Bureau Vermont Civil Violation

Case Type
 Violation-Other
 Ordinance violation
 Non-criminal traffic violation

Disposition Group
 Fish and Wildlife
 Municipal Complaint
 Vermont Civil Violation

APPENDIX V: DISPOSITIONAL GUIDELINES

Civil

Division	Disposition Group	Interim	Standard Guideline	Revised Standard Guideline	Complex Case Guideline	Revised Complex Case Guideline
Civil	Appeal (Civil Division)		180	180	365	365
Civil	Claim Against Government		365	365	540	540
Civil	Collection		120	180	180	300
Civil	Contract		365	540	540	540
Civil	Declaratory Relief		365	365	540	540
Civil	Employment		540	540	731	731
Civil	Foreclosure		450	605	731	910
Civil	Landlord/Tenant		180	180	270	270
Civil	Miscellaneous (Civil)		90	180	180	365
Civil	Prisoner		270	270	365	540
Civil	Real Property		365	540	540	731
Civil	Small Claims		120	180	180	270
Civil	Stalking		30	30	90	90
Civil	Tort		540	731	731	910

Criminal

Division	Disposition Group	Interim	Standard Guideline	Revised Standard Guideline	Complex Case Guideline	Revised Complex Case Guideline
Criminal	Civil Miscellaneous	Yes	90	90	0	0
Criminal	Civil Suspension	Yes	90	90	0	0
Criminal	Felony		180	365	365	545
Criminal	Fish and Game	Yes	90	90	0	0
Criminal	Judicial Bureau Appeal	Yes	60	60	0	0
Criminal	Miscellaneous (Criminal)	Yes	90	120	0	0
Criminal	Misdemeanor		120	180	180	270
Criminal	Uniform Fire Prevention Ticket	Yes	90	90	0	0

Family

Division	Disposition Group	Interim	Standard Guideline	Revised Standard Guideline	Complex Case Guideline	Revised Complex Case Guideline
Family	Annulment	Yes	270	270	540	540
Family	Desertion	Yes	270	270	540	540
Family	Dissolution with Children		270	365	540	731
Family	Dissolution without Children		270	365	540	731
Family	Juvenile		98	120	158	240
Family	Mental Health	Yes	30	30	0	0
Family	Miscellaneous (Family)	Yes	90	90	0	0
Family	Parentage		180	270	270	365
Family	Protection Order (Family)	Yes	14	14	0	0
Family	Registration of a Foreign Order	Yes	14	14	0	0
Family	Separation	Yes	270	270	540	540
Family	UIFSA	Yes	90	90	120	120

Probate

Division	Disposition Group	Interim	Standard Guideline	Revised Standard Guideline	Complex Case Guideline	Revised Complex Case Guideline
Probate	Adoption		90	90	270	365
Probate	Estate		365	540	540	731
Probate	Guardianship - Adult (Involuntary)		90	180	180	270
Probate	Guardianship - Adult (Voluntary)		30	60	90	180
Probate	Guardianship - Minor		90	150	180	270
Probate	Miscellaneous (Probate)	Yes	90	90	0	0
Probate	Trust		90	90	365	540

Environmental

Division	Disposition Group	Interim	Standard Guideline	Revised Standard Guideline	Complex Case Guideline	Revised Complex Case Guideline
Environmental	Act 250 and ANR De Novo Appeals		330	365	390	540
Environmental	ANR & NRB Enforcement		240	240	0	0
Environmental	Civil Citation	Yes	30	30	90	90
Environmental	Miscellaneous (Environmental)	Yes	90	90	0	0
Environmental	Municipal De Novo Appeal		300	300	365	480
Environmental	Municipal Enforcement		150	150	0	0
Environmental	On the Record Appeal		210	365	0	0

Judicial Bureau

Division	Disposition Group	Interim	Standard Guideline	Revised Standard Guideline	Complex Case Guideline	Revised Complex Case Guideline
Judicial Bureau	Fish and Wildlife		90	90	0	0
Judicial Bureau	Municipal Complaint		90	90	0	0
Judicial Bureau	Vermont Civil Violation		90	90	0	0