

VERMONT

JUDICIARY



STATISTICAL SUMMARY

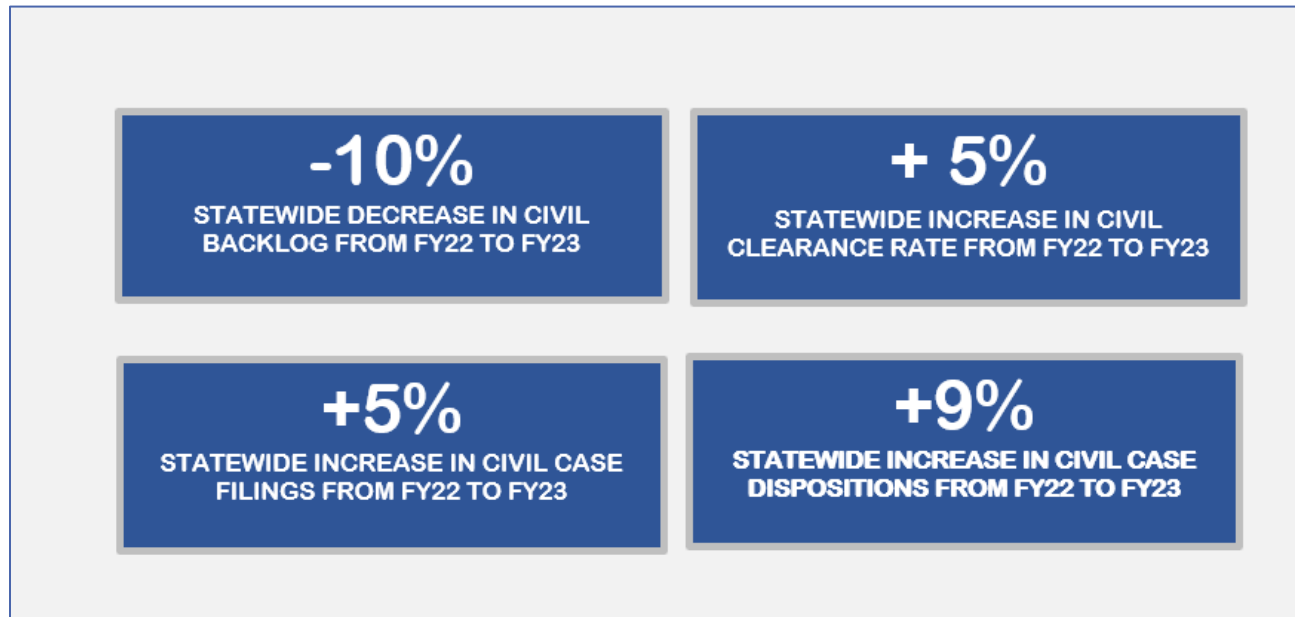
FY 2023

TABLE OF CONTENTS

FY23 SUMMARY OF CASELOAD BY DIVISION: STATEWIDE	
CIVIL	2
CRIMINAL	3
FAMILY	4
PROBATE	5
ENVIRONMENTAL	6
JUDUCIAL BUREAU	6
HIGHLIGHTS INCOMING CASES	7
FY23 INCOMING CASES: NEW FILINGS, REOPENED AND REACTIVATED	8
HIGHLIGHTS OUTGOING CASES	9
FY23 OUTGOING CASES: JUDGMENTS, REOPENED, AND INACTIVE DISPOSITIONS	10
FY23 OUTGOING CASES: METHOD OF DISPOSITION	11
FY23 OUTGOING CASES: TIME TO DISPOSITION	
CIVIL	12
CRIMINAL	13
FAMILY	14
PROBATE	15
ENVIRONMENTAL	16
JUDICIAL BUREAU	16
APPENDIX I: INCOMING CASES BY DIVISION	17
APPENDIX II: OUTGOING CASES BY DIVISION	22
APPENDIX III: FY23 SUMMARY OF CASELOAD BY UNIT	27
APPENDIX IV: CASE TYPES AND DISPOSITION GROUPS	83
APPENDIX V: DISPOSITIONAL GUIDELINES	88

FY23 SUMMARY OF CASELOAD BY DIVISION: STATEWIDE

Civil Division	Incoming	Outgoing	Pending End of Year Active	Clearance Rate
Appeal	183	200	80	109%
Claim Against Government	28	35	27	125%
Collection	1074	1222	450	114%
Contract	180	164	212	91%
Declaratory Relief	70	81	79	116%
Employment	23	28	34	122%
Foreclosure	527	550	485	104%
Landlord/Tenant	1769	1480	807	84%
Abandoned Property	19	20	4	105%
Eviction	1717	1431	782	83%
Other	33	29	21	88%
Miscellaneous Civil	297	228	223	77%
Prisoner	547	508	362	93%
Real Property	48	49	67	102%
Small Claims	3364	4076	1277	121%
Stalking	1411	1431	99	101%
Sexual Assault	25	25	3	100%
Sexual Assault on behalf of Minor	7	6	2	86%
Stalking	1280	1305	87	102%
Stalking on behalf of Minor	99	95	7	96%
Tort	416	439	615	106%
Total	9937	10491	4817	106%



Criminal Division	Incoming	Outgoing	Pending End of Year Active	Clearance Rate
Civil Miscellaneous	404	353	307	87%
Civil Suspension	1094	1344	724	123%
Felony	5657	5760	4731	102%
Domestic Violence	734	806	556	110%
Drugs	734	765	534	104%
Elder Abuse	2	1	1	50%
Motor Vehicle-DWI/DUI	353	410	261	116%
Motor Vehicle-Other	341	353	254	104%
Other	48	55	8	115%
Person	1242	1233	1434	99%
Property	1737	1653	1318	95%
Protection Order Violation	82	82	74	100%
Public Order	375	396	279	106%
Weapons	9	6	12	67%
Unknown	0	2	0	
Fish and Game	197	244	203	124%
Judicial Bureau Appeal	43	69	35	160%
Miscellaneous (Criminal)	0	1	460	
Misdemeanor	15830	16824	11061	106%
Domestic Violence	754	873	629	116%
Drugs	791	804	469	102%
Elder Abuse	3	2	2	67%
Motor Vehicle-DWI/DUI	2459	2795	1617	114%
Motor Vehicle-Other	3123	3561	2002	114%
Other	120	129	27	108%
Person	1264	1292	991	102%
Property	3568	3487	2292	98%
Protection Order Violation	401	432	350	108%
Public Order	3323	3434	2661	103%
Weapons	24	15	21	63%
Uniform Fire Prevention Ticket	0	0	0	
Total	23225	24595	17521	106%
Investigative Requests	2730	3321	232	122%

-7%

STATEWIDE DECREASE IN CRIMINAL BACKLOG FROM FY22 TO FY23

+6%

STATEWIDE INCREASE IN CRIMINAL CLEARANCE RATE FROM FY22 TO FY23

-10%

STATEWIDE DECREASE IN CRIMINAL CASE FILINGS FROM FY22 TO FY23

+28%

STATEWIDE INCREASE IN CRIMINAL CASE DISPOSITIONS FROM FY22 TO FY23

Family Division	Incoming	Outgoing	Pending End of Year Active	Clearance Rate
Annulment	0	0	1	
Desertion	0	0	0	
Dissolution with Children	845	760	762	90%
Dissolution without Children	1152	1191	541	103%
Juvenile	1854	1892	1295	102%
CHINS A- Abandoned or Abused	58	47	47	
CHINS B- Neglect	577	686	366	119%
CHINS C- Beyond Control	55	56	25	102%
CHINS D- Truant	143	144	101	101%
Delinquency	703	634	547	90%
Vulnerable Noncitizen Child	1	1	0	100%
Youthful Offender	317	324	209	102%
Mental Health	1058	1067	63	101%
Continued Treatment	205	214	18	104%
Involuntary Medication	83	85	2	102%
Involuntary Treatment	554	552	42	100%
Warrant for Emergency Exam	216	216	1	100%
Misc. Family	49	41	31	84%
Parentage	787	753	681	96%
Protection Order	3638	3655	199	100%
Extreme Risk Protection Order	21	22	3	
Registration of Foreign Abuse Prevention	1	2	0	200%
Relief from Abuse	3106	3125	159	101%
Relief from Abuse on behalf of a Minor	439	440	30	100%
Relief from Abuse /Neglect/ Exploitation	71	66	7	93%
Registration of Foreign Order	35	33	24	94%
Separation	0	3	0	
UIFSA	87	107	42	123%
Total	9505	9502	3639	100%

0%

STATEWIDE INCREASE IN FAMILY BACKLOG FROM FY22 TO FY23

- 3%

STATEWIDE DECREASE IN FAMILY CLEARANCE RATE FROM FY22 TO FY23

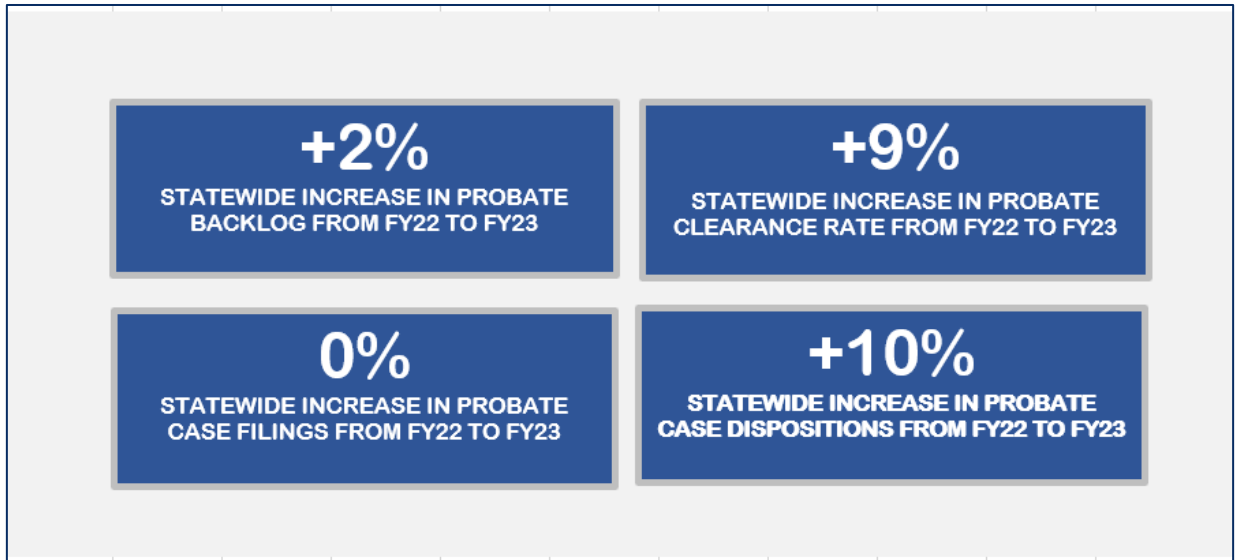
+1%

STATEWIDE INCREASE IN FAMILY CASE FILINGS FROM FY22 TO FY23

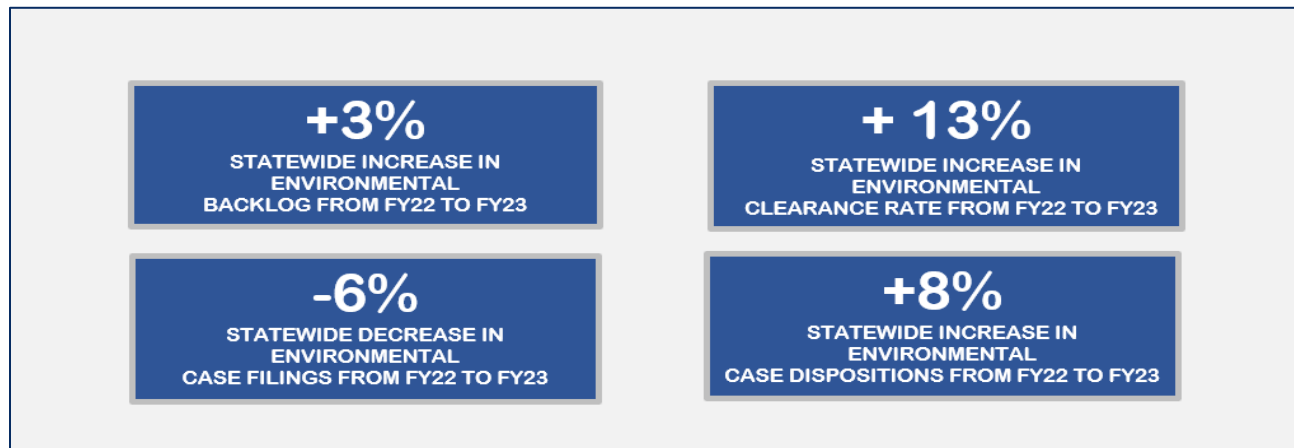
-2%

STATEWIDE DECREASE IN FAMILY CASE DISPOSITIONS FROM FY22 TO FY23

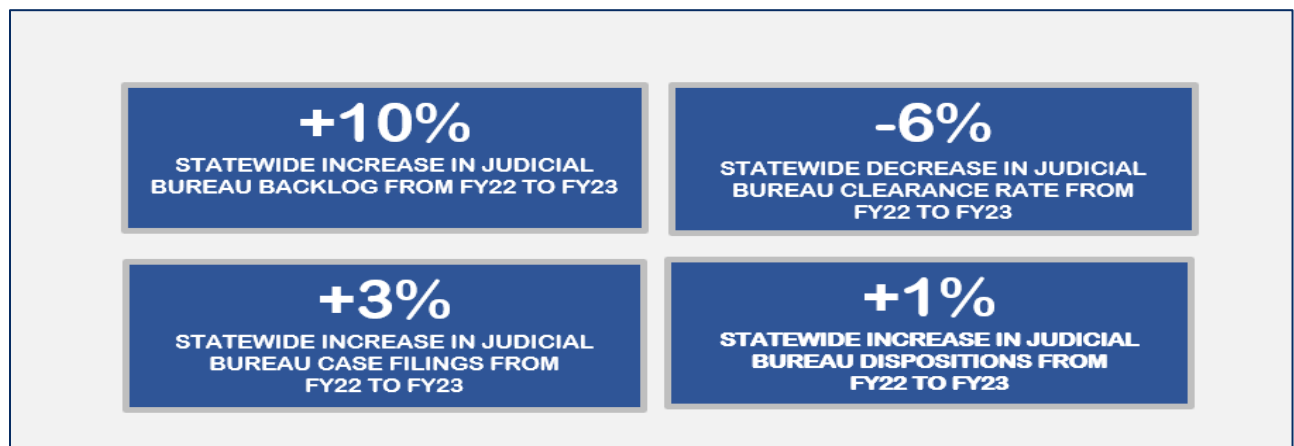
Probate Division	Incoming	Outgoing	Pending End of Year Active	Clearance Rate
Adoption	282	289	119	102%
Adult	52	53	14	102%
Conversion	0	7	3	
Minor- Agency	156	161	20	103%
Minor- Private	73	67	81	92%
Surrender & Relinquishment	1	1	1	100%
Estate	2609	2434	6025	93%
Guardianship Adult	449	451	302	100%
Involuntary	370	375	243	101%
Voluntary	79	76	59	96%
Guardianship Minor	351	343	422	98%
Custodial	247	251	311	102%
Financial	68	59	69	87%
Permanent	35	33	41	94%
Vulnerable Noncitizen Child	1	0	1	
Misc. Probate	32	28	23	88%
Trust	35	58	224	166%
Total	3758	3603	7115	96%
Administrative Matters	4069	4061	351	100%



Environmental Division	Incoming	Outgoing	Pending End of Year Active	Clearance Rate
Act 250 and ANR De Novo Appeals	23	15	29	65%
ANR & NRB Enforcement	22	21	5	95%
Civil Citation	5	3	2	60%
Miscellaneous (Environmental)	2	2	2	100%
Municipal De Novo Appeal	62	60	64	97%
Municipal Enforcement	15	24	17	160%
On the Record Appeal	4	4	6	100%
Total	133	129	125	97%

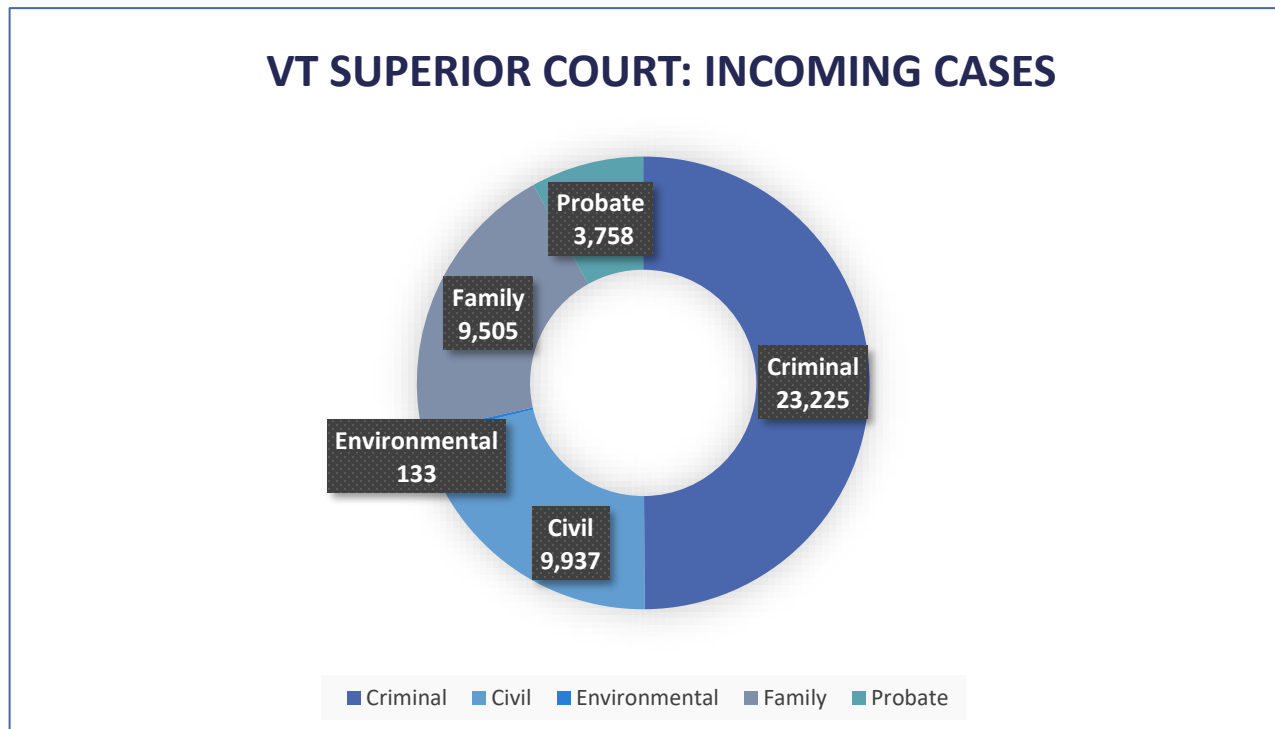


Judicial Bureau	Incoming	Outgoing	Pending End of Year Active	Clearance Rate
Fish and Wildlife	224	216	31	96%
Municipal Complaint	953	939	114	99%
Vermont Civil Violation	40,540	40,105	4,887	99%
Total	41,717	41,260	5,032	99%



Highlights: Incoming Cases

- There were 46,558 incoming cases in the Vermont Superior Court (criminal, civil, family, probate, and environmental divisions) in FY23. This includes new filings, reopened cases, and reactivated cases.¹ This represents a 11% increase from the previous year.
- In addition:
 - 2730 investigative requests were filed in the criminal division, a 5% increase from the previous year.
 - 4069 administrative matters were filed in the probate division, a 7% increase from the previous year.
 - 41,717 cases were filed in the Judicial Bureau, a 3% increase from the previous year.

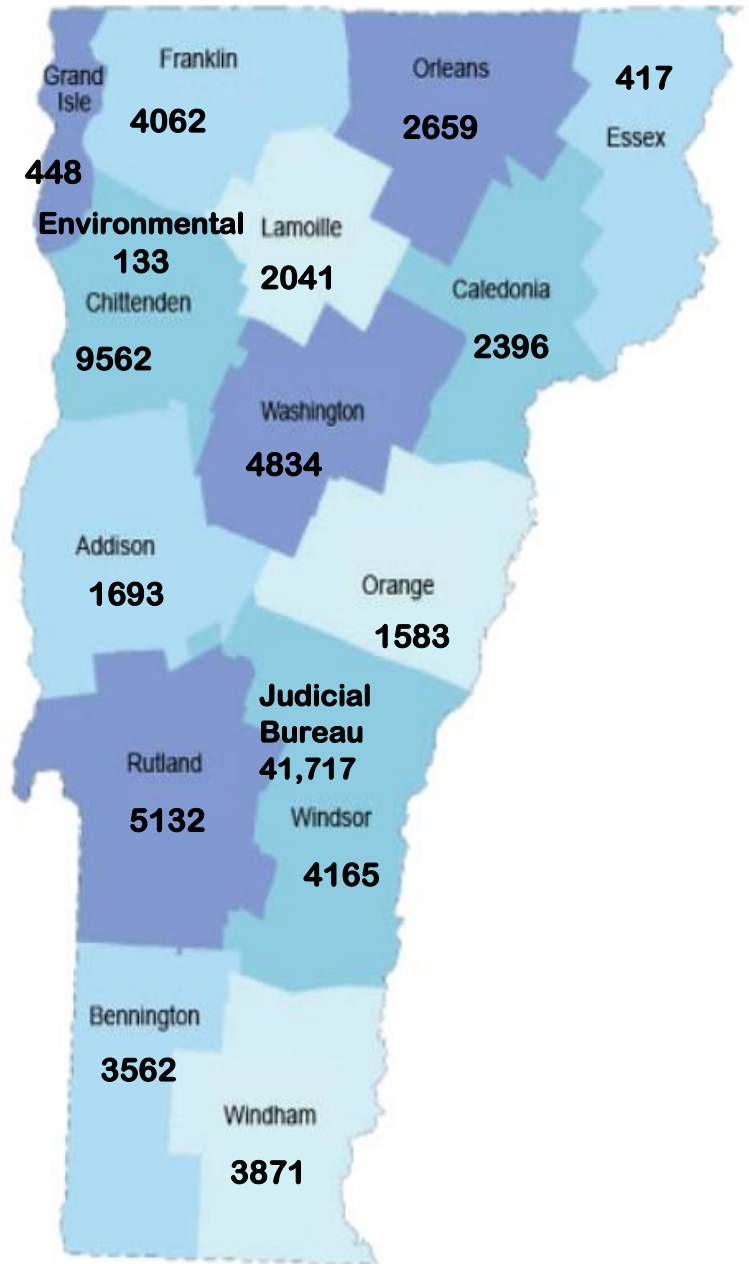


¹ A reopened case is a previously adjudicated case that has been reopened and is now active. A reactivated case is one which was never adjudicated but was placed on inactive status and has since been restored to the court's control.

**FY23 INCOMING CASES:
NEW FILINGS, REOPENED AND REACTIVATED**

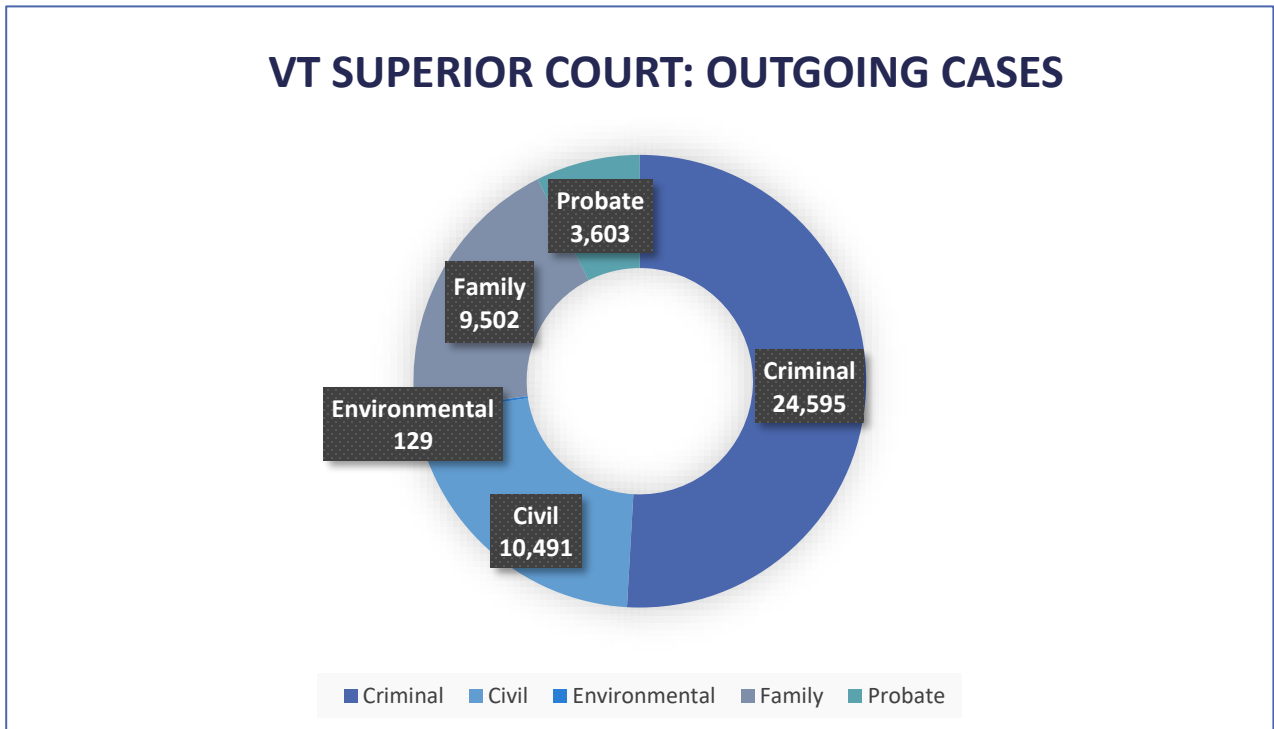
**Incoming Cases
By Division**

	Criminal	Civil	Family	Probate	Total
Addison	627	447	440	179	1693
Bennington	1852	685	751	274	3562
Caledonia	1186	511	489	210	2396
Chittenden	4746	2157	1949	710	9562
Essex	179	100	96	42	417
Franklin	2044	892	827	299	4062
Grand Isle	163	134	109	42	448
Lamoille	1175	370	371	125	2041
Orange	667	338	385	193	1583
Orleans	1315	606	522	216	2659
Rutland	2545	1090	1059	438	5132
Washington	2643	898	982	311	4834
Windham	1969	788	803	311	3871
Windsor	2114	921	722	408	4165
Environmental		133			46425
Judicial Bureau		41717			



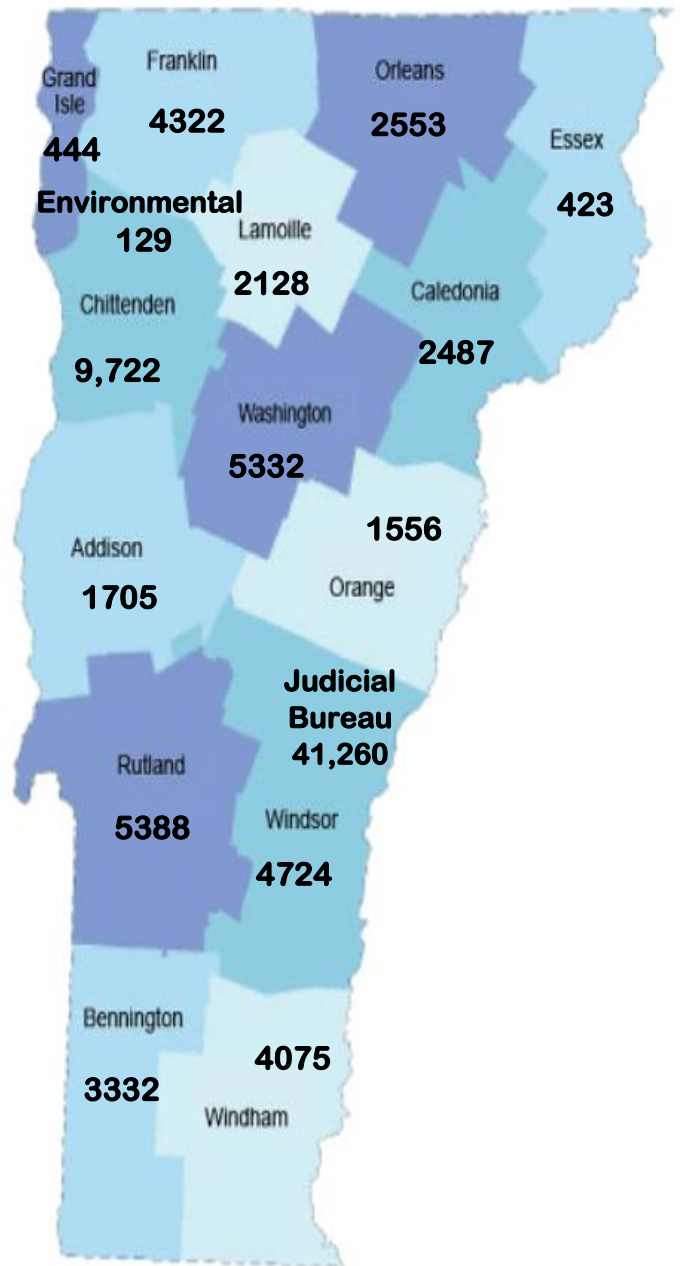
Highlights: Outgoing Cases

- There were 48,320 outgoing cases in the Vermont Superior Court (criminal, civil, family, probate, and environmental divisions) in FY23. This includes judgments, reopened, and inactive dispositions. This represents a 15% increase from the previous year.
- In addition:
 - 3,321 investigative requests were disposed in the criminal division, a 41% increase from the previous year.
 - 4,061 administrative matters were disposed in the probate division, a 6% increase from the previous year.
 - 41,260 cases were disposed in the Judicial Bureau, a 1% increase from the previous year.

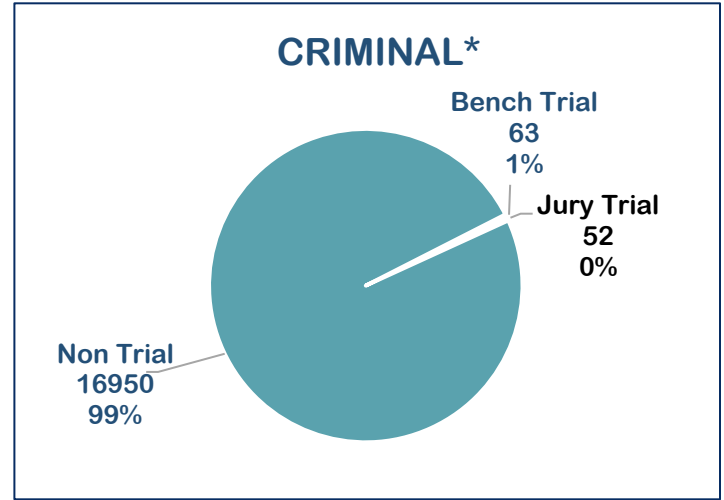
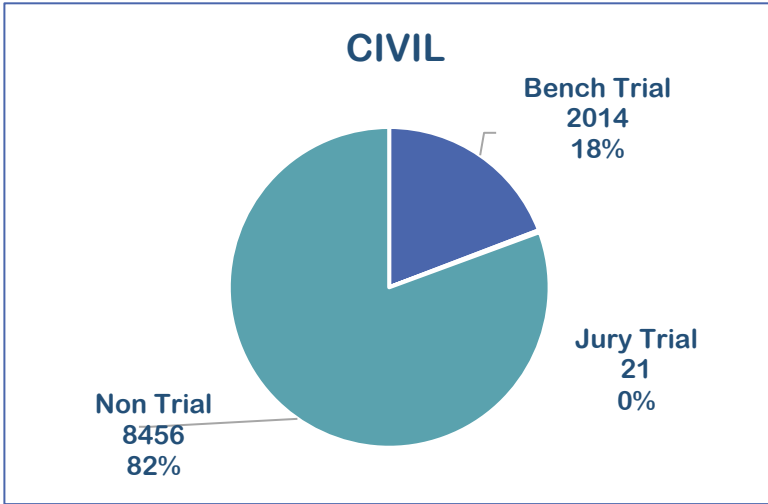


FY23 OUTGOING CASES: JUDGMENTS, REOPENED, AND INACTIVE DISPOSITIONS

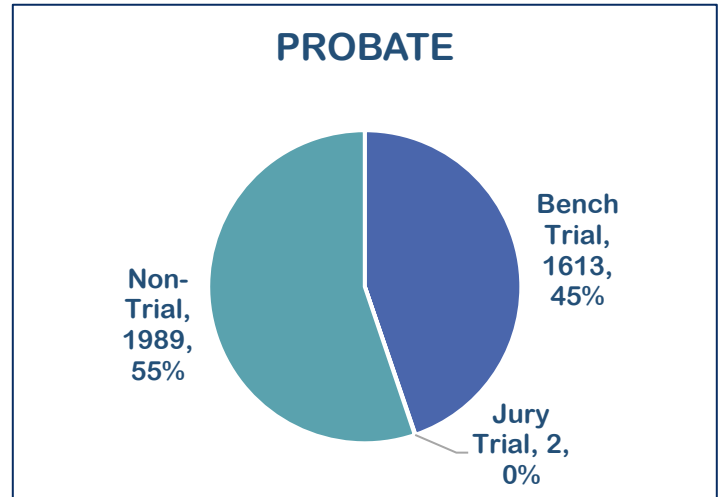
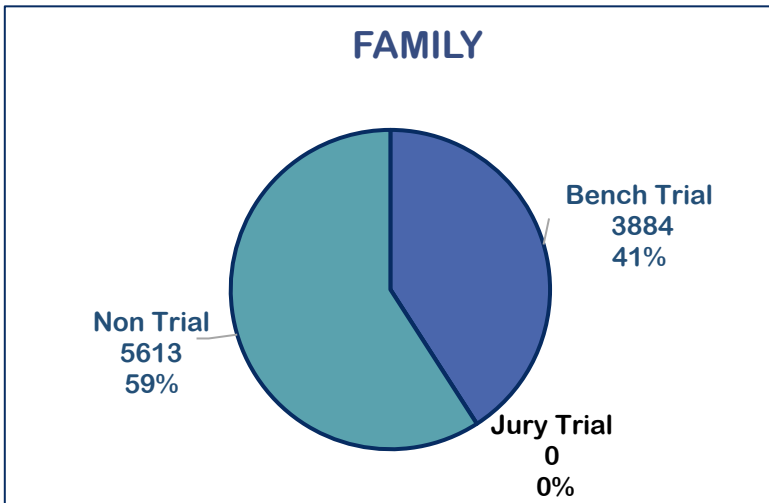
Outgoing Cases By Division					
	Criminal	Civil	Family	Probate	
Addison	615	448	431	211	1705
Bennington	1679	666	765	222	3332
Caledonia	1242	633	489	123	2487
Chittenden	4700	2359	1959	704	9722
Essex	198	106	93	26	423
Franklin	2448	890	807	177	4322
Grand Isle	195	123	95	31	444
Lamoille	1215	395	396	122	2128
Orange	671	333	385	167	1556
Orleans	1152	638	479	284	2553
Rutland	2842	1074	1041	431	5388
Washington	2934	984	1015	399	5332
Windham	2165	786	834	290	4075
Windsor	2539	1056	713	416	4724
Environmental		129			48191
Judicial Bureau		41,260			



FY23 OUTGOING CASES: METHOD OF DISPOSITION

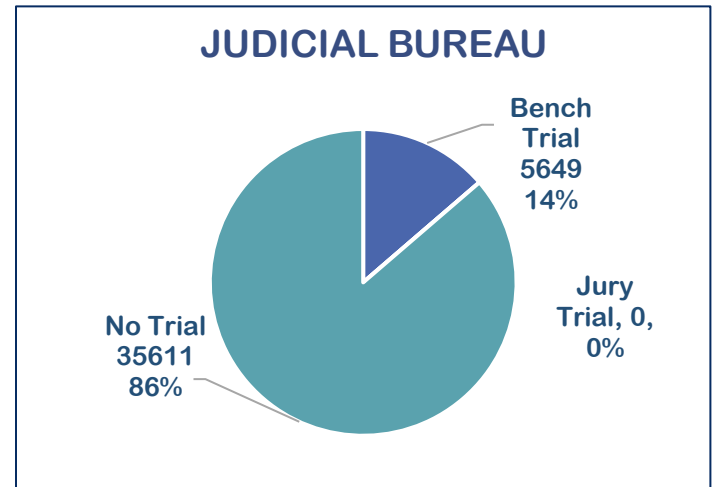
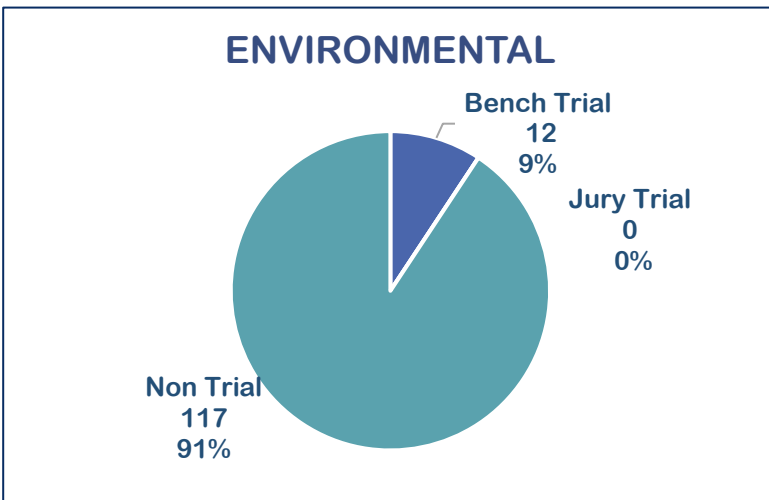


**Judgments & Reopened; does not include 7530 Inactive cases.*



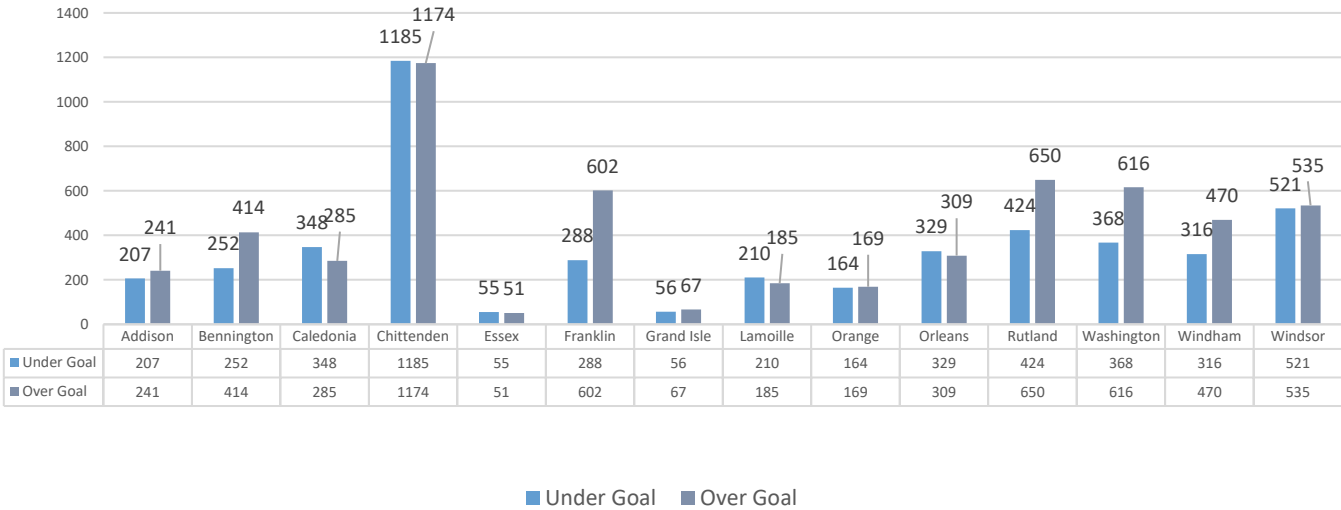
Does not include Administrative Matters

**Judgments & Reopened; does not include 5 Inactive cases.*

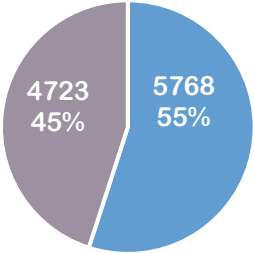


FY23 OUTGOING CASES: TIME TO DISPOSITION

Civil: Supreme Court Guidelines

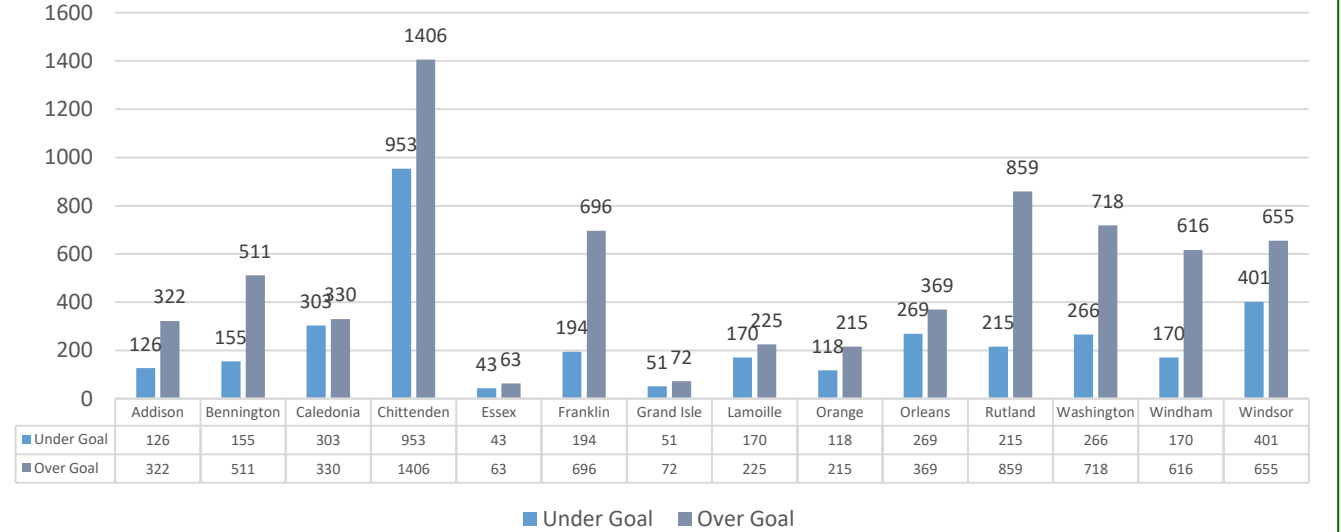


Civil: Supreme Court Guidelines

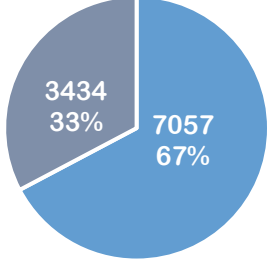


■ Under Goal ■ Over Goal

Civil: Revised Guidelines

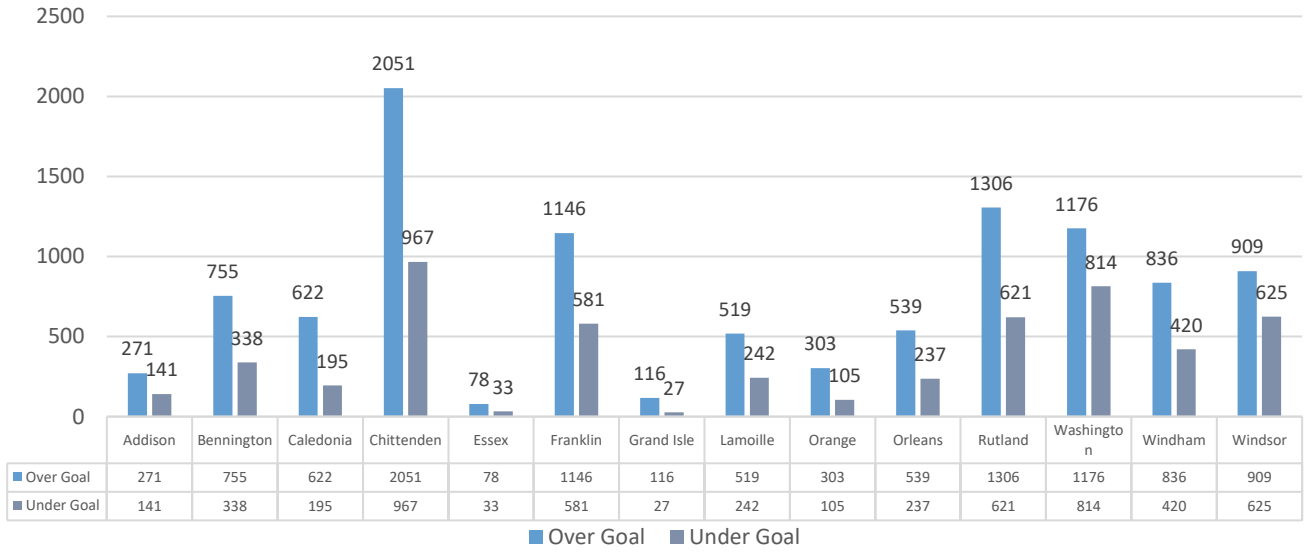


Civil: Revised Guidelines

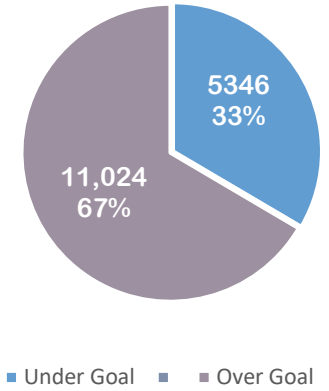


■ Under Goal ■ Over Goal

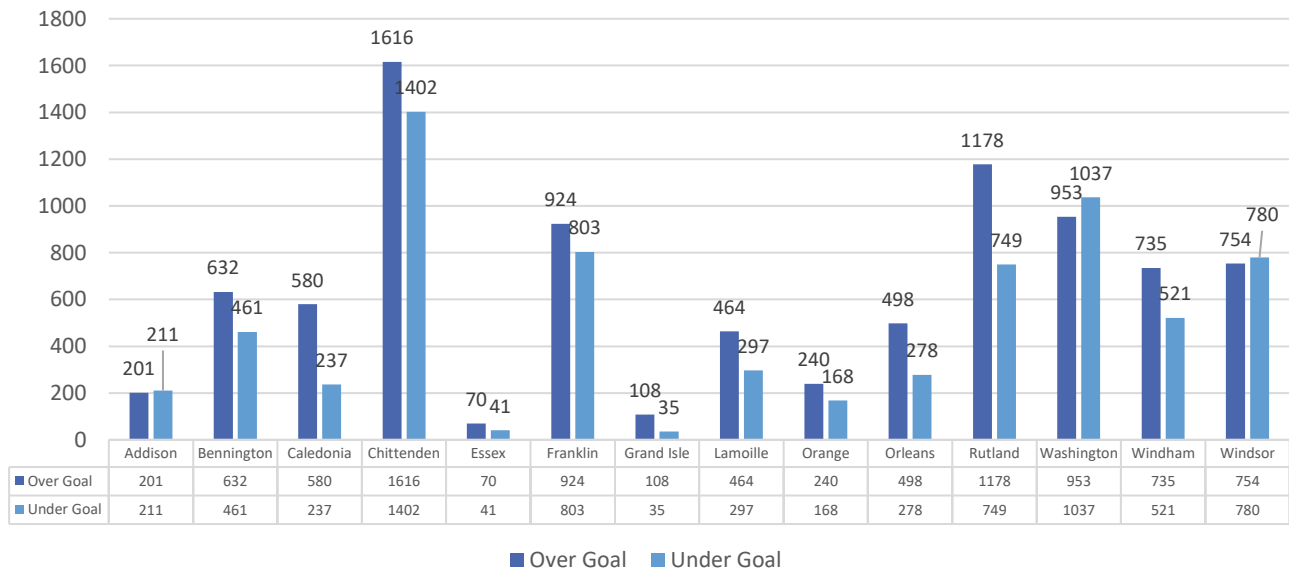
Criminal: Supreme Court Guidelines (Judgments Only)



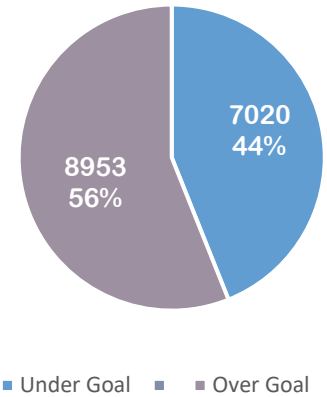
Criminal: Supreme Court Guidelines



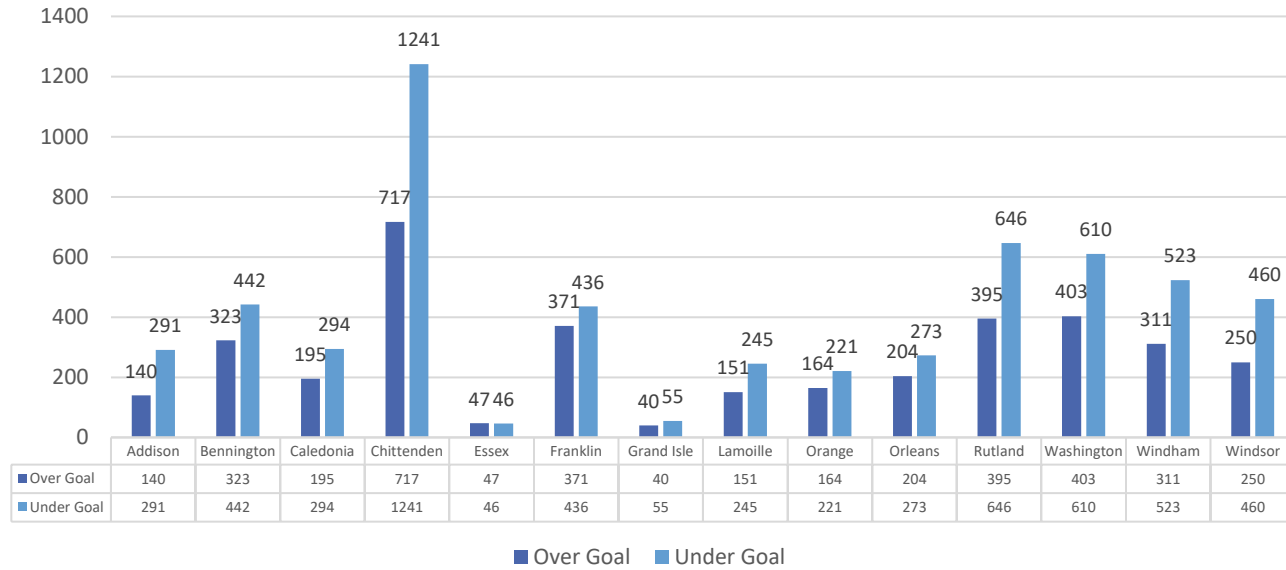
Criminal: Revised Guidelines (Judgments Only)



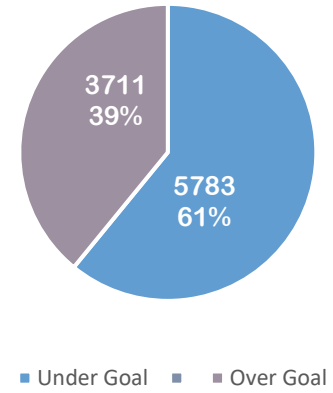
Criminal: Revised Guidelines



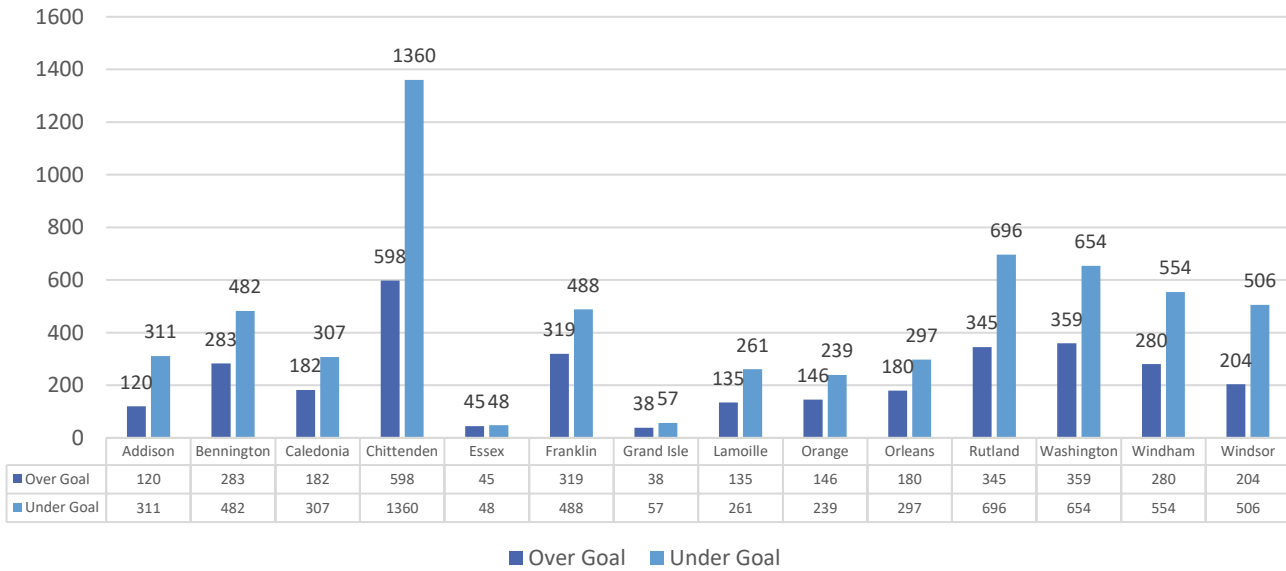
Family: Supreme Court Guidelines



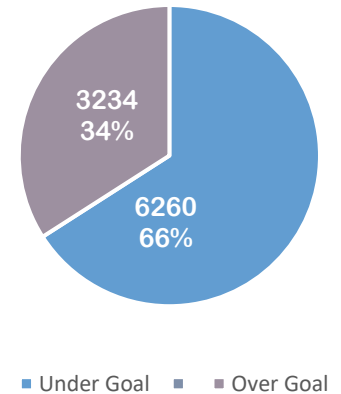
Family: Supreme Court Guidelines



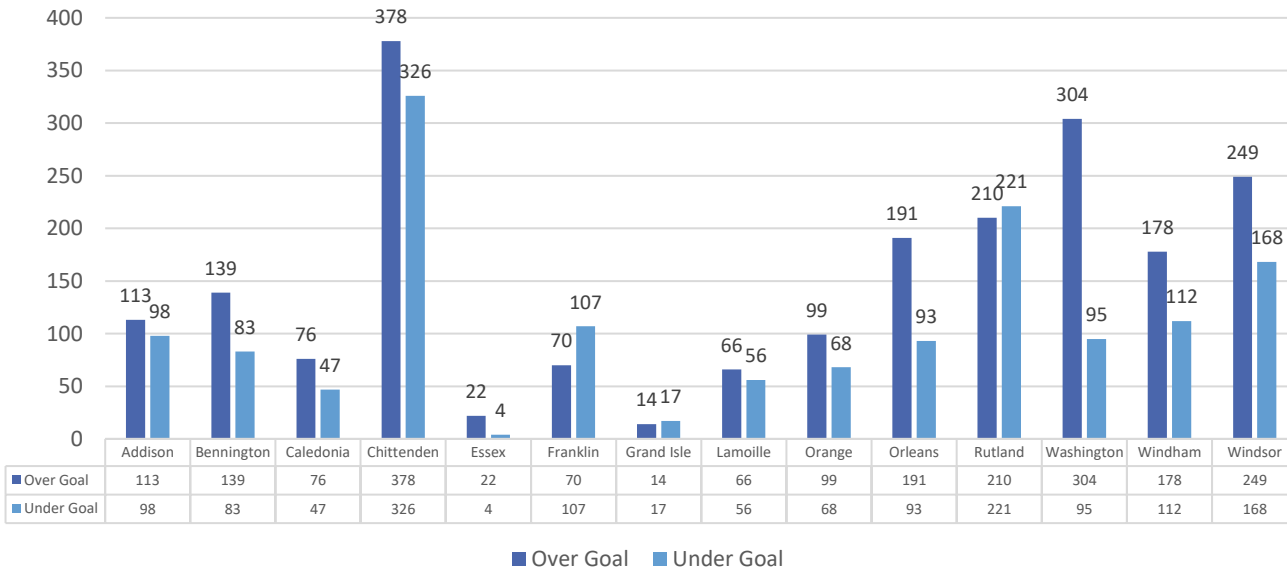
Family: Revised Guidelines



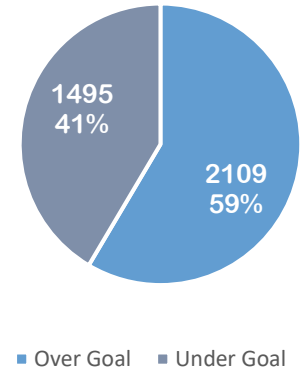
Family: Revised Guidelines



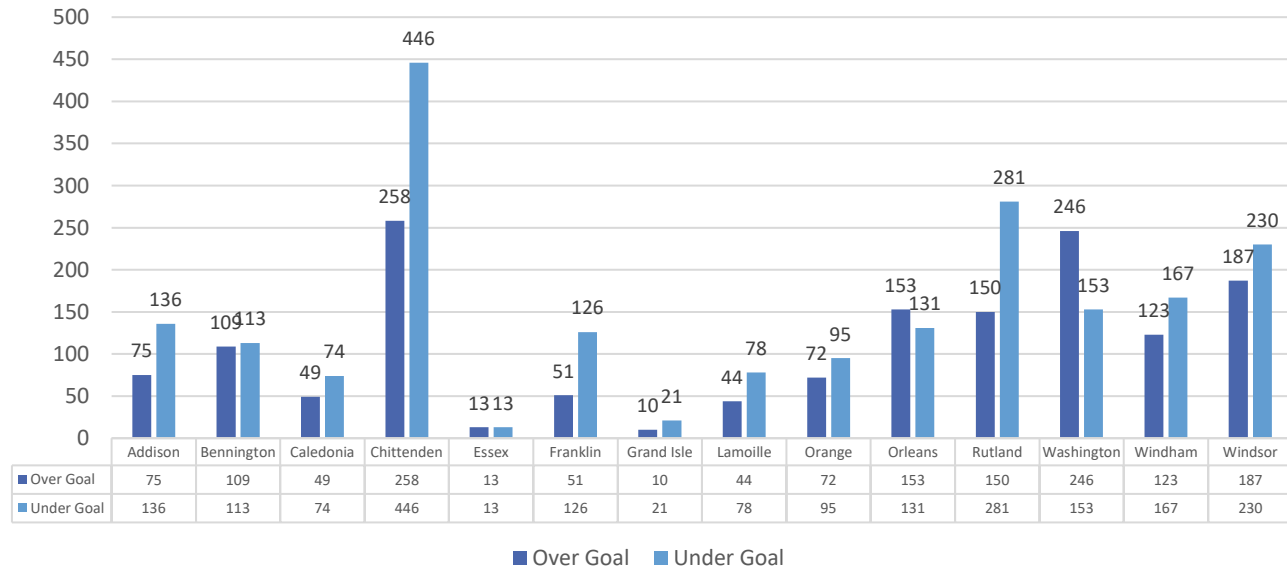
Probate: Supreme Court Guidelines



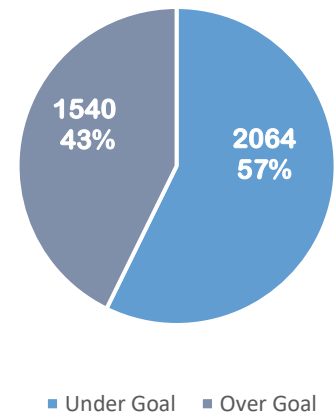
Probate: Supreme Court Guidelines



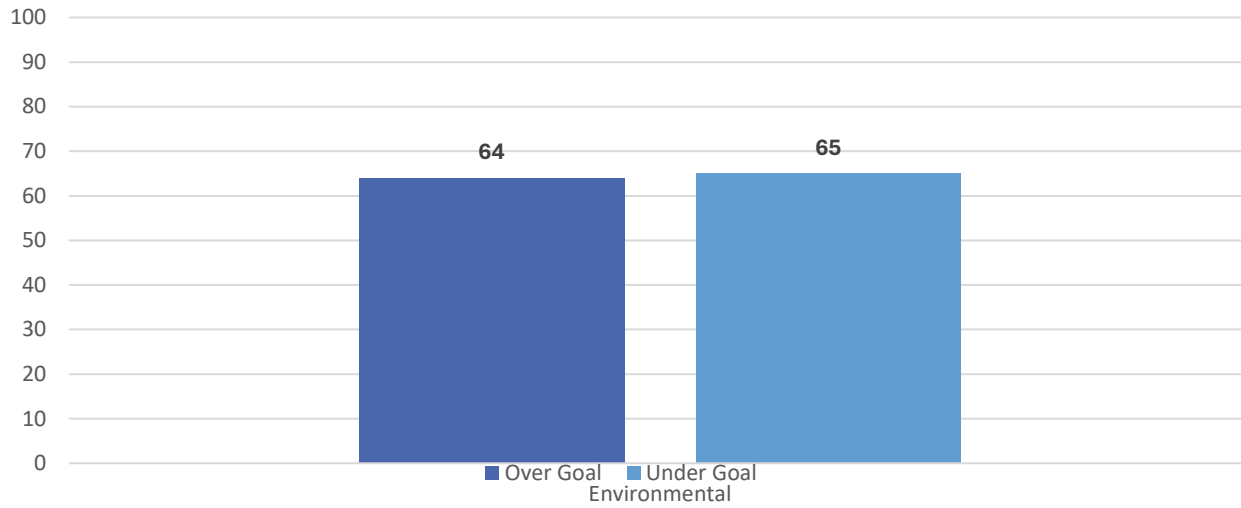
Probate: Revised Guidelines



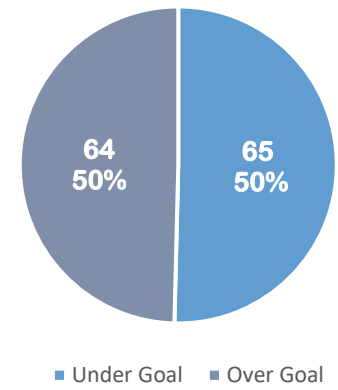
Probate: Revised Guidelines



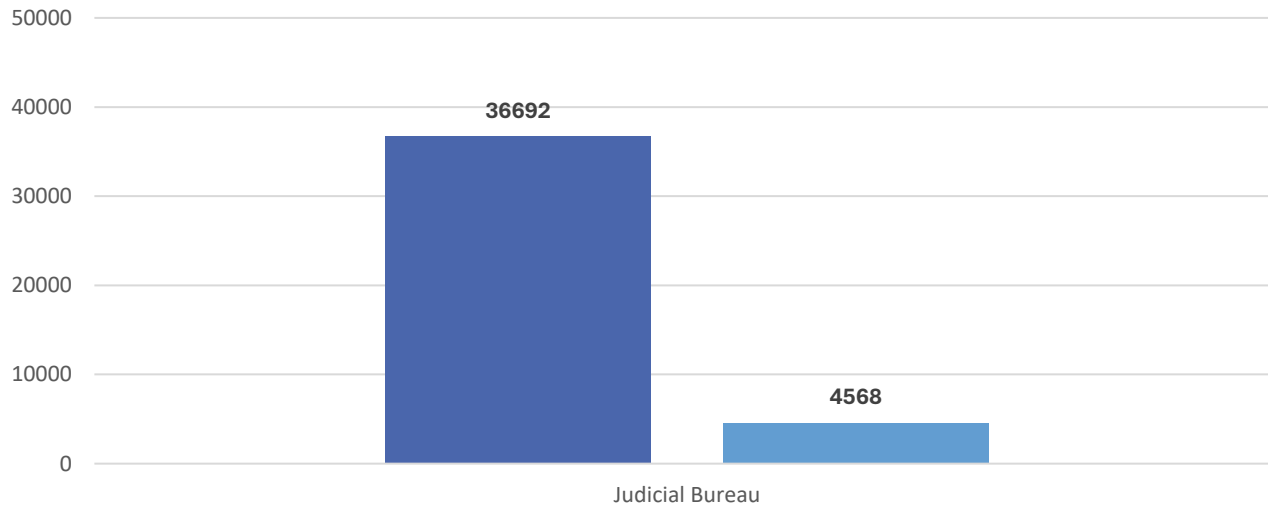
Environmental Division: Supreme Court / Target Guidelines



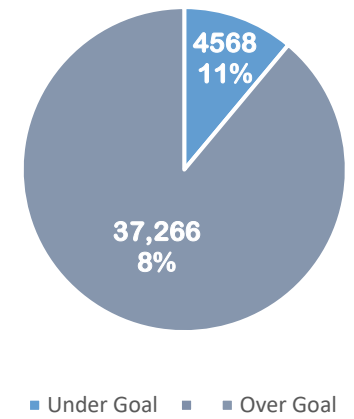
Environmental Division



Judicial Bureau: Supreme Court / Target Guidelines



Judicial Bureau



APPENDIX I: INCOMING CASES BY DIVISION

CIVIL

Unit	Appeal	Govt. Claim	Collection	Declaratory			Foreclosure	Landlord/ Tenant	Misc. Civil	Prisoner	Real Property	Small Claims	Stalking	Tort	Civil Total
				Contract	Relief	Employment									
Addison	5	0	52	10	2	2	30	76	12	6	3	150	85	14	447
Bennington	5	1	56	13	5	1	42	129	24	8	0	235	141	25	685
Caledonia	13	0	57	20	4	1	25	87	8	54	2	144	85	11	511
Chittenden	30	10	218	41	11	7	80	439	48	84	6	819	235	129	2157
Essex	1	0	7	0	1	0	8	11	7	4	1	35	19	6	100
Franklin	18	0	101	8	7	3	43	144	13	48	7	312	162	26	892
Grand Isle	1	1	18	9	2	0	12	17	1	1	0	44	26	2	134
Lamoille	5	0	41	12	6	0	45	38	14	1	2	149	38	19	370
Orange	1	0	58	4	8	0	19	53	6	2	2	113	60	12	338
Orleans	28	1	53	15	2	1	24	58	12	151	6	173	61	21	606
Rutland	21	1	108	13	4	4	62	260	32	26	1	341	174	43	1090
Washington	20	9	125	10	10	0	39	126	39	88	4	267	124	37	898
Windham	8	3	82	12	4	1	39	174	26	23	5	297	83	31	788
Windsor	27	2	98	13	4	3	59	157	55	51	9	285	118	40	921
Total	183	28	1074	180	70	23	527	1769	297	547	48	3364	1411	416	9937

Unit	Property	Eviction	Other	Tenant
Addison	0	74	2	76
Bennington	2	126	1	129
Caledonia	0	87	0	87
Chittenden	4	423	12	439
Essex	0	11	0	11
Franklin	4	138	2	144
Grand Isle	0	17	0	17
Lamoille	1	37	0	38
Orange	3	50	0	53
Orleans	0	58	0	58
Rutland	1	255	4	260
Washington	1	122	3	126
Windham	2	170	2	174
Windsor	1	149	7	157
Total	19	1717	33	1769

Assault	SA obo Minor	Stalking	Stalking obo Minor	Stalking
1	0	83	1	85
0	1	130	10	141
0	0	76	9	85
10	0	213	12	235
0	0	16	3	19
0	0	156	6	162
0	0	24	2	26
1	0	36	1	38
1	3	47	9	60
2	2	54	3	61
3	0	151	20	174
1	1	108	14	124
0	0	79	4	83
6	0	107	5	118
25	9	1181	103	1411

CRIMINAL

Unit	Civil Misc.	Civil Suspension	Felony	Fish and Game	Jud. Bureau Appeal	Misc. Criminal	Misdemeanor	Fire Prevention	Criminal Total
Addison	15	32	144	4	2	0	430	0	627
Bennington	18	107	584	11	0	0	1132	0	1852
Caledonia	18	80	290	14	2	0	780	0	1184
Chittenden	126	295	1167	7	20	0	3131	0	4746
Essex	3	2	60	4	0	0	110	0	179
Franklin	20	68	454	15	1	0	1488	0	2046
Grand Isle	5	8	26	3	0	0	121	0	163
Lamoille	7	87	217	10	3	0	851	0	1175
Orange	11	38	158	3	1	0	456	0	667
Orleans	19	41	380	22	1	0	852	0	1315
Rutland	19	83	570	22	2	0	1849	0	2545
Washington	28	108	606	11	4	0	1886	0	2643
Windham	44	85	448	15	3	0	1374	0	1969
Windsor	71	60	553	56	4	0	1370	0	2114
Total	404	1094	5657	197	43	0	15830	0	23225

Unit	Investigative Requests
Addison	103
Bennington	338
Caledonia	192
Chittenden	636
Essex	6
Franklin	189
Grand Isle	14
Lamoille	183
Orange	80
Orleans	164
Rutland	236
Washington	203
Windham	225
Windsor	161
Total	2730

FAMILY

Unit	Annulment	Desertion	Diss w/ Children	Diss. w/out Children	Juvenile	Mental Health	Misc. Family	Parentage	Protection Order	Foreign Order	Separation	UIFSA	Family Total
Addison	0	0	35	67	124	22	2	39	148	0	0	3	440
Bennington	0	0	61	77	156	18	6	75	343	7	0	8	751
Caledonia	0	0	39	43	74	39	7	43	237	1	0	6	489
Chittenden	0	0	185	267	334	305	7	121	714	5	0	11	1949
Essex	0	0	11	16	14	1	0	3	48	0	0	3	96
Franklin	0	0	67	91	244	22	3	85	309	1	0	5	827
Grand Isle	0	0	6	12	26	1	0	8	51	1	0	4	109
Lamoille	0	0	33	46	89	32	1	26	140	2	0	2	371
Orange	0	0	46	59	39	21	4	33	172	6	0	5	385
Orleans	0	0	48	56	142	37	2	42	191	2	0	2	522
Rutland	0	0	86	121	168	121	1	99	448	1	0	14	1059
Washington	0	0	95	117	202	134	7	73	342	4	0	8	982
Windham	0	0	59	84	84	265	3	70	228	2	0	8	803
Windsor	0	0	74	96	158	40	6	70	267	3	0	8	722
Total	0	0	845	1152	1854	1058	49	787	3638	35	0	87	9505

Unit	CHINS A	CHINS B	CHINS C	CHINS D	Vulnerable		Total CHINS	Delinquency	Youthful Offender	Total Delinquency	All Juvenile
					Noncitizen	Total CHINS					
Addison	1	53	3	2	1	60	48	16	64	124	
Bennington	1	38	8	29	0	76	57	23	80	156	
Caledonia	0	41	0	7	0	48	15	11	26	74	
Chittenden	22	127	6	15	0	170	100	64	164	334	
Essex	1	10	0	0	0	11	1	2	3	14	
Franklin	5	43	10	18	0	76	104	64	168	244	
Grand Isle	2	7	1	3	0	13	6	7	13	26	
Lamoille	1	28	2	13	0	44	40	5	45	89	
Orange	0	8	0	10	0	18	16	5	21	39	
Orleans	13	49	6	1	0	69	56	17	73	142	
Rutland	2	73	6	15	0	96	60	12	72	168	
Washington	7	17	5	12	0	41	94	67	161	202	
Windham	0	42	3	8	0	53	29	2	31	84	
Windsor	3	41	5	10	0	59	77	22	99	158	
Total	58	577	55	143	1	834	703	317	1020	1854	

Unit	Continued Treatment	Involuntary Medication	Involuntary Treatment	Emergency Exam	Total Mental Health
Addison	3	0	12	7	22
Bennington	1	0	11	6	18
Caledonia	10	0	12	17	39
Chittenden	52	5	172	76	305
Essex	1	0	0	0	1
Franklin	9	0	5	8	22
Grand Isle	0	0	1	0	1
Lamoille	15	0	11	6	32
Orange	15	0	2	4	21
Orleans	5	0	14	18	37
Rutland	27	10	52	32	121
Washington	45	23	65	1	134
Windham	20	45	177	23	265
Windsor	2	0	20	18	40
Total	205	83	554	216	1058

Extreme Risk Protection	Foreign Abuse Prevention	Relief from Abuse	Relief from Abuse obo Minor	RFA/Neglect/Exploitation	Total Protection Order
3	0	113	27	5	148
1	0	278	54	10	343
3	0	203	29	2	237
4	0	642	47	21	714
1	0	43	4	0	48
2	0	274	30	3	309
0	0	40	10	1	51
0	0	121	14	5	140
2	0	129	41	0	172
1	0	154	34	2	191
2	0	398	35	13	448
1	0	289	51	1	342
0	0	193	32	3	228
1	1	229	31	5	267
21	1	3106	439	71	3638

PROBATE

Unit	Adoption	Estate	Guardianship Adult Involuntary	Guardianship Adult Voluntary	Guardianship Minor	Misc. Probate	Trust	Probate
Addison	19	124	14	2	14	3	3	179
Bennington	22	191	16	8	32	2	3	274
Caledonia	8	149	22	5	23	1	2	210
Chittenden	72	491	82	16	39	1	9	710
Essex	2	30	4	0	6	0	0	42
Franklin	32	181	31	11	41	1	2	299
Grand Isle	4	34	3	0	0	1	0	42
Lamoille	6	103	8	1	7	0	0	125
Orange	11	132	19	2	21	3	5	193
Orleans	25	128	31	5	25	1	1	216
Rutland	28	310	43	7	43	6	1	438
Washington	20	205	36	12	31	5	2	311
Windham	19	225	25	5	31	4	2	311
Windsor	14	306	36	5	38	4	5	408
Total	282	2609	370	79	351	32	35	3758

Unit	Adoption Adult	Adoption Minor - Agency	Adoption Minor-Private	Surrender & Relinquishment	Total Adoption
Addison	2	10	7	0	19
Bennington	1	19	2	0	22
Caledonia	2	0	2	4	8
Chittenden	9	41	21	1	72
Essex	2	0	0	0	2
Franklin	8	19	5	0	32
Grand Isle	0	0	4	0	4
Lamoille	3	0	3	0	6
Orange	4	0	5	2	11
Orleans	8	12	5	0	25
Rutland	7	10	11	0	28
Washington	3	12	5	0	20
Windham	0	16	3	0	19
Windsor	3	6	5	0	14
Total	52	145	78	7	282

Unit	Administrative Matters
Addison	329
Bennington	237
Caledonia	161
Chittenden	929
Essex	55
Franklin	185
Grand Isle	67
Lamoille	185
Orange	159
Orleans	139
Rutland	486
Washington	445
Windham	344
Windsor	348
Total	4069

ENVIRONMENTAL

Unit	Act 250 and ANR De Novo Appeals	ANR & NRB Enforcement	Civil Citation	Misc. (Environmental)	Municipal De Novo Appeal	Municipal Enforcement	On the Record Appeal	Total
Environmental	23	22	5	2	62	15	4	133
Total	23	22	5	2	62	15	4	133

JUDICIAL BUREAU

Unit	Fish & Wildlife	Municipal Complaint	Vermont Civil Violation	Judicial Bureau Total
Judicial Bureau	224	953	40,540	41717
Total	224	953	40540	41717

APPENDIX II: OUTGOING CASES BY DIVISION

CIVIL

Unit	Appeal	Govt. Claim	Collection	Contract	Declaratory			Foreclosure	Landlord/Tenant	Misc. Civil	Prisoner	Real Property	Small Claims	Stalking	Tort	Civil Total
					Relief	Employment										
Addison	4	1	62	6	3	1	28	51	7	6	3	166	92	18	448	
Bennington	6	2	65	8	3	3	33	98	16	15	2	250	141	24	666	
Caledonia	18	0	65	9	3	0	37	83	7	50	2	259	85	15	633	
Chittenden	30	8	291	60	18	12	81	347	55	56	5	960	292	144	2359	
Essex	0	0	12	1	0	0	8	9	3	3	0	54	11	5	106	
Franklin	20	0	120	10	5	1	42	124	10	35	3	338	155	27	890	
Grand Isle	0	1	17	2	1	0	13	7	2	1	0	49	28	2	123	
Lamoille	4	1	49	12	6	1	22	50	7	4	1	176	41	21	395	
Orange	1	0	58	4	8	0	23	47	6	1	3	113	58	11	333	
Orleans	24	6	57	10	4	2	26	64	13	130	6	225	52	19	638	
Rutland	23	4	102	8	6	0	68	207	23	15	7	403	174	34	1074	
Washington	30	10	130	18	10	2	53	109	42	101	1	317	124	37	984	
Windham	13	0	92	12	7	4	42	136	18	15	7	338	73	29	786	
Windsor	27	2	102	4	7	2	74	148	19	76	9	428	105	53	1056	
Total	200	35	1222	164	81	28	550	1480	228	508	49	4076	1431	439	10491	

Unit	Abandoned Property	Eviction	Other	Landlord Tenant Total
Addison	0	49	2	51
Bennington	1	95	2	98
Caledonia	0	81	2	83
Chittenden	4	334	9	347
Essex	0	9	0	9
Franklin	4	120	0	124
Grand Isle	0	7	0	7
Lamoille	1	48	1	50
Orange	2	44	1	47
Orleans	0	63	1	64
Rutland	2	204	1	207
Washington	1	107	1	109
Windham	3	132	1	136
Windsor	2	138	8	148

Sexual Assault	SA obo Minor	Stalking	Stalking obo Minor	SA / Stalking Total
1	0	90	1	92
0	1	130	10	141
0	0	78	7	85
12	0	266	14	292
0	0	8	3	11
0	0	150	5	155
0	0	26	2	28
1	0	38	2	41
0	3	46	9	58
1	1	47	3	52
2	0	155	17	174
2	1	107	14	124
0	0	70	3	73
6	0	94	5	105

CRIMINAL

Unit	Civil Misc.	Civil Suspension	Felony	Fish and Game	Jud. Bureau Appeal	Misc. Criminal	Misdemeanor	Fire Prevention	Criminal Total
Addison	5	45	141	4	7	0	413	0	615
Bennington	14	92	536	15	0	0	1022	0	1679
Caledonia	14	66	313	14	2	0	833	0	1242
Chittenden	106	317	1134	11	27	0	3105	0	4700
Essex	16	4	67	7	0	0	104	0	198
Franklin	14	90	502	33	1	0	1808	0	2448
Grand Isle	8	10	27	10	0	0	140	0	195
Lamoille	7	95	185	5	3	0	920	0	1215
Orange	13	51	135	4	1	0	467	0	671
Orleans	14	58	334	18	0	0	728	0	1152
Rutland	23	135	554	34	4	0	2092	0	2842
Washington	31	154	693	12	10	0	2034	0	2934
Windham	16	116	496	14	5	1	1517	0	2165
Windsor	72	111	643	63	9	0	1641	0	2539
Total	353	1344	5760	244	69	1	16824	0	24595

Unit	Investigative Requests
Addison	326
Bennington	246
Caledonia	150
Chittenden	906
Essex	52
Franklin	192
Grand Isle	69
Lamoille	179
Orange	159
Orleans	164
Rutland	470
Washington	447
Windham	331
Windsor	370
Total	4061

FAMILY

Unit	Annulment	Desertion	Diss w/ Children	Diss. w/out Children	Juvenile	Mental Health	Misc. Family	Parentage	Protection Order	Foreign Order	Separation	UIFSA	Family Total
Addison	0	0	45	55	118	22	3	35	150	0	0	3	431
Bennington	0	0	57	80	174	20	5	65	351	5	0	8	765
Caledonia	0	0	24	65	73	41	5	42	232	2	1	4	489
Chittenden	0	0	176	269	337	312	6	123	711	7	0	18	1959
Essex	0	0	10	17	11	1	0	6	44	1	0	3	93
Franklin	0	0	58	91	255	21	2	78	297	1	2	2	807
Grand Isle	0	0	5	10	22	1	0	4	50	0	0	3	95
Lamoille	0	0	31	50	118	31	0	29	135	0	0	2	396
Orange	0	0	31	56	60	20	3	34	169	3	0	9	385
Orleans	0	0	41	67	93	37	2	51	183	1	0	4	479
Rutland	0	0	74	122	173	112	3	88	455	3	0	11	1041
Washington	0	0	91	117	216	141	3	64	372	2	0	9	1015
Windham	0	0	45	79	108	267	4	65	242	4	0	20	834
Windsor	0	0	72	113	134	41	5	69	264	4	0	11	713
Total	0	0	760	1191	1892	1067	41	753	3655	33	3	107	9502

Unit	CHINS A	CHINS B	CHINS C	CHINS D	Vulnerable Noncitizen	Total CHINS	Delinquency	Youthful Offender	Total Delinquency	All Juvenile
Addison	0	56	4	2	1	63	40	15	55	118
Bennington	1	40	9	35	0	85	65	24	89	174
Caledonia	0	34	1	7	0	42	15	16	31	73
Chittenden	30	150	6	10	0	196	61	80	141	337
Essex	1	6	0	0	0	7	3	1	4	11
Franklin	5	64	12	14	0	95	104	56	160	255
Grand Isle	1	3	1	4	0	9	5	8	13	22
Lamoille	0	48	2	19	0	69	44	5	49	118
Orange	0	19	0	9	0	28	23	9	32	60
Orleans	0	33	7	4	0	44	39	10	49	93
Rutland	1	87	1	18	0	107	50	16	66	173
Washington	5	61	4	11	0	81	78	57	135	216
Windham	0	54	6	6	0	66	39	3	42	108
Windsor	3	31	3	5	0	42	68	24	92	134
Total	47	686	56	144	1	934	634	324	958	1892

Unit	Continued Treatment	Involuntary Medication	Involuntary Treatment	Emergency Exam	Total Mental Health
Addison	4	0	11	7	22
Bennington	1	0	13	6	20
Caledonia	11	0	12	18	41
Chittenden	53	5	178	76	312
Essex	1	0	0	0	1
Franklin	9	0	4	8	21
Grand Isle	0	0	1	0	1
Lamoille	15	0	10	6	31
Orange	14	0	2	4	20
Orleans	5	0	14	18	37
Rutland	25	10	46	31	112
Washington	52	25	63	1	141
Windham	21	45	178	23	267
Windsor	3	0	20	18	41
Total	214	85	552	216	1067

Extreme Risk Protection	Foreign Abuse Prevention	Relief from Abuse	Relief from Abuse obo Minor	RFA/Neglect/Exploitation	Total Protection Order
4	0	114	27	5	150
1	1	288	52	9	351
3	0	200	27	2	232
5	0	639	45	22	711
1	0	39	4	0	44
1	0	267	26	3	297
0	0	39	10	1	50
0	0	116	16	3	135
2	0	126	41	0	169
0	0	146	35	2	183
3	0	407	33	12	455
1	0	316	54	1	372
0	0	203	36	3	242
1	1	225	34	3	264
22	2	3125	440	66	3655

PROBATE

Unit	Adoption	Estate	Guardianship Adult Involuntary	Guardianship Adult Voluntary	Guardianship Minor	Misc. Probate	Trust	Probate
Addison	18	136	18	4	18	2	15	211
Bennington	27	149	12	10	20	2	2	222
Caledonia	13	76	15	5	12	1	1	123
Chittenden	79	487	78	13	36	0	11	704
Essex	3	13	5	0	5	0	0	26
Franklin	28	123	8	1	16	0	1	177
Grand Isle	5	24	1	0	0	1	0	31
Lamoille	6	86	16	2	10	0	2	122
Orange	13	75	23	3	47	3	3	167
Orleans	17	168	58	7	29	0	5	284
Rutland	31	277	52	9	50	7	5	431
Washington	10	316	30	7	28	3	5	399
Windham	23	214	19	3	23	5	3	290
Windsor	16	290	40	12	49	4	5	416
Total	289	2434	375	76	343	28	58	3603

Unit	Adoption Adult	Adoption Conversion	Adoption Minor-Agency	Adoption Minor-Private	Surrender & Relinquishment	Total Adoption
Addison	3	0	10	5	0	18
Bennington	2	0	0	20	5	27
Caledonia	2	2	6	3	0	13
Chittenden	7	1	49	21	1	79
Essex	3	0	0	0	0	3
Franklin	9	0	16	3	0	28
Grand Isle	0	0	4	1	0	5
Lamoille	3	0	0	3	0	6
Orange	4	0	5	4	0	13
Orleans	7	0	9	1	0	17
Rutland	6	3	12	10	0	31
Washington	2	0	6	2	0	10
Windham	0	1	16	6	0	23
Windsor	5	0	8	3	0	16
Total	53		141	82	6	289

Unit	Administrative Matters
Addison	326
Bennington	246
Caledonia	150
Chittenden	906
Essex	52
Franklin	192
Grand Isle	69
Lamoille	179
Orange	159
Orleans	164
Rutland	470
Washington	447
Windham	331
Windsor	370
Total	4061

ENVIRONMENTAL

Unit	Act 250 and ANR De Novo Appeals	ANR & NRB Enforcement	Civil Citation	Misc. (Environmental)	Municipal De Novo Appeal	Municipal Enforcement	On the Record Appeal	Total
Environmental	15	21	3	2	60	24	4	129
Total	15	21	3	2	60	24	4	129

JUDICIAL BUREAU

Unit	Fish & Wildlife	Municipal Complaint	Vermont Civil Violation	Judicial Bureau Total
Judicial Bureau	216	939	40,105	41260
Total	216	939	40105	41260

Appendix III: FY23 SUMMARY OF CASELOAD BY UNIT

ADDISON

Civil Division	Incoming	Outgoing	Pending End of Year Active	Clearance Rate
Appeal	5	4	5	80%
Claim Against Government	0	1	0	
Collection	52	62	25	119%
Contract	10	6	14	60%
Declaratory Relief	2	3	3	150%
Employment	2	1	3	50%
Foreclosure	30	28	29	93%
Landlord/Tenant	76	51	46	67%
Abandoned Property	0	0	0	
Eviction	74	49	45	66%
Other	2	2	1	100%
Miscellaneous Civil	12	7	11	58%
Prisoner	6	6	4	100%
Real Property	3	3	3	100%
Small Claims	150	166	52	111%
Stalking	75	75	2	100%
Sexual Assault	1	1	0	100%
Sexual Assault on behalf of Minor	0	0	0	
Stalking	83	90	2	108%
Stalking on behalf of Minor	1	1	0	100%
Tort	14	18	27	129%
Total	447	448	224	100%

Criminal Division	Incoming	Outgoing	Pending End of Year Active	Clearance Rate
Civil Miscellaneous	15	5	12	33%
Civil Suspension	32	45	14	141%
Felony	144	141	127	98%
Domestic Violence	19	24	14	126%
Drugs	9	5	6	56%
Elder Abuse	0	0	0	
Motor Vehicle-DWI/DUI	15	19	9	127%
Motor Vehicle-Other	8	11	11	138%
Other	3	4	1	133%
Person	32	33	38	103%
Property	50	38	40	76%
Protection Order Violation	0	1	0	
Public Order	8	6	8	75%
Weapons	0	0	0	
Fish and Game	4	4	1	100%
Judicial Bureau Appeal	2	7	1	
Miscellaneous (Criminal)	0	0	0	
Misdemeanor	430	413	256	96%
Domestic Violence	24	34	11	142%
Drugs	4	4	3	100%
Elder Abuse	0	0	0	
Motor Vehicle-DWI/DUI	87	93	52	107%
Motor Vehicle-Other	85	73	47	86%
Other	22	26	11	118%
Person	31	24	22	77%
Property	68	58	37	85%
Protection Order Violation	11	17	13	155%
Public Order	97	84	59	87%
Weapons	1	0	1	
Uniform Fire Prevention Ticket	0	0	0	
Total	627	615	411	98%
Investigative Requests	103	133	24	129%

Family Division	Incoming	Outgoing	Pending End of Year Active	Clearance Rate
Annulment	0	0	0	
Desertion	0	0	0	
Dissolution with Children	35	45	27	129%
Dissolution without Children	67	55	23	82%
Juvenile	124	118	56	95%
CHINS A- Abandoned or Abused	1	0	1	
CHINS B- Neglect	53	56	15	106%
CHINS C- Beyond Control	3	4	0	133%
CHINS D- Truant	2	2	0	100%
Delinquency	48	40	31	83%
Vulnerable Noncitizen Child	1	1	0	100%
Youthful Offender	16	15	9	94%
Mental Health	22	22	1	100%
Continued Treatment	3	4	0	133%
Involuntary Medication	0	0	0	
Involuntary Treatment	12	11	1	92%
Warrant for Emergency Exam	7	7	0	100%
Misc. Family	2	3	4	150%
Parentage	39	35	26	90%
Protection Order	148	150	4	101%
Extreme Risk Protection Order	3	4	1	133%
Registration of Foreign Abuse Prevention	0	0	0	
Relief from Abuse	113	114	3	101%
Relief from Abuse on behalf of a Minor	27	27	0	100%
Relief from Abuse/Neglect/Exploitation	5	5	0	100%
Registration of Foreign Order	0	0	0	
Separation	0	0	0	
UIFSA	3	3	1	100%
Total	440	431	142	98%

Probate Division	Incoming	Outgoing	Pending End of Year Active	Clearance Rate
Adoption	19	18	4	95%
Adult	2	3	0	150%
Minor- Agency	10	10	0	100%
Minor- Private	7	5	4	71%
Surrender & Relinquishment	0	0	0	
Estate	124	136	218	110%
Guardianship Adult	16	22	1	138%
Involuntary	14	18	1	129%
Voluntary	2	4	0	200%
Guardianship Minor	14	18	4	129%
Custodial	12	17	3	142%
Financial	2	1	1	50%
Permanent	0	0	0	
Vulnerable Noncitizen Child	0	0	0	
Misc. Probate	3	2	1	67%
Trust	3	15	10	500%
Total	179	211	238	118%
Administrative Matters	329	326	12	99%

BENNINGTON

Civil Division	Incoming	Outgoing	Pending End of Year Active	Clearance Rate
Appeal	5	6	1	120%
Claim Against Government	1	2	0	200%
Collection	56	65	26	116%
Contract	13	8	13	62%
Declaratory Relief	5	3	5	60%
Employment	1	3	1	300%
Foreclosure	42	33	30	79%
Landlord/Tenant	129	98	71	76%
Abandoned Property	2	1	1	50%
Eviction	126	95	69	75%
Other	1	2	1	200%
Miscellaneous Civil	24	16	19	67%
Prisoner	8	15	17	188%
Real Property	0	2	2	
Small Claims	235	250	57	106%
Stalking	141	141	5	100%
Sexual Assault	0	0	0	
Sexual Assault on behalf of Minor	1	1	0	100%
Stalking	130	130	5	100%
Stalking on behalf of Minor	10	10	0	100%
Tort	25	24	35	96%
Total	685	666	282	97%

Criminal Division	Incoming	Outgoing	Pending End of Year Active	Clearance Rate
Civil Miscellaneous	18	14	24	78%
Civil Suspension	107	92	67	86%
Felony	584	536	519	92%
Domestic Violence	53	48	51	91%
Drugs	125	103	110	82%
Elder Abuse	0	0	0	
Motor Vehicle-DWI/DUI	24	33	18	138%
Motor Vehicle-Other	28	25	17	89%
Other	3	1	2	
Person	136	118	139	87%
Property	154	150	127	97%
Protection Order Violation	19	10	17	53%
Public Order	38	44	33	116%
Weapons	4	4	5	
Fish and Game	11	15	4	136%
Judicial Bureau Appeal	0	0	0	
Miscellaneous (Criminal)	0	0	0	
Misdemeanor	1132	1022	1022	90%
Domestic Violence	33	38	33	115%
Drugs	102	97	84	95%
Elder Abuse	0	0	0	
Motor Vehicle-DWI/DUI	175	161	118	92%
Motor Vehicle-Other	269	232	232	86%
Other	4	4	1	100%
Person	50	45	57	90%
Property	235	213	190	91%
Protection Order Violation	38	29	38	76%
Public Order	226	202	268	89%
Weapons	0	1	1	
Uniform Fire Prevention Ticket	0	0	0	
Total	1852	1679	1636	91%
Investigative Requests	338	352	25	104%

Family Division	Incoming	Outgoing	Pending End of Year Active	Clearance Rate
Annulment	0	0	0	
Desertion	0	0	0	
Dissolution with Children	61	57	47	93%
Dissolution without Children	77	80	25	104%
Juvenile	156	174	59	112%
CHINS A- Abandoned or Abused	1	1	1	100%
CHINS B- Neglect	38	40	11	105%
CHINS C- Beyond Control	8	9	0	113%
CHINS D- Truant	29	35	14	121%
Delinquency	57	65	24	114%
Vulnerable Noncitizen Child	0	0	0	
Youthful Offender	23	24	9	104%
Mental Health	18	20	0	111%
Continued Treatment	1	1	0	100%
Involuntary Medication	0	0	0	
Involuntary Treatment	11	13	0	118%
Warrant for Emergency Exam	6	6	0	100%
Misc. Family	6	5	1	83%
Parentage	75	65	41	87%
Protection Order	343	351	17	102%
Extreme Risk Protection Order	1	1	0	100%
Registration of Foreign Abuse Prevention	0	1	0	
Relief from Abuse	278	288	10	104%
Relief from Abuse on behalf of a Minor	54	52	6	96%
Relief from Abuse/Neglect/Exploitation	10	9	1	90%
Registration of Foreign Order	7	5	5	71%
Separation	0	0	0	
UIFSA	8	8	5	100%
Total	751	765	200	102%

Probate Division	Incoming	Outgoing	Pending End of Year Active	Clearance Rate
Adoption	22	27	5	123%
Adult	1	2	0	200%
Minor- Agency	19	20	0	105%
Minor- Private	2	5	5	250%
Surrender & Relinquishment	0	0	0	
Estate	191	149	515	78%
Guardianship Adult	24	22	13	92%
Involuntary	16	12	10	75%
Voluntary	8	10	3	125%
Guardianship Minor	32	20	23	63%
Custodial	18	14	12	78%
Financial	6	3	6	50%
Permanent	8	3	5	38%
Vulnerable Noncitizen Child	0	0	0	
Misc. Probate	2	2	1	100%
Trust	3	2	2	67%
Total	274	222	559	81%
Administrative Matters	237	246	8	104%

CALEDONIA

Civil Division	Incoming	Outgoing	Pending End of Year Active	Clearance Rate
Appeal	13	18	5	138%
Claim Against Government	0	0	1	
Collection	57	65	28	114%
Contract	20	9	22	45%
Declaratory Relief	4	3	5	75%
Employment	1	0	2	0%
Foreclosure	25	37	14	148%
Landlord/Tenant	87	83	51	95%
Abandoned Property	0	0	0	
Eviction	87	81	51	93%
Other	0	2	0	
Miscellaneous Civil	8	7	6	88%
Prisoner	54	50	36	93%
Real Property	2	2	2	100%
Small Claims	144	259	55	180%
Stalking	85	85	3	100%
Sexual Assault	0	0	0	
Sexual Assault on behalf of Minor	0	0	0	
Stalking	76	78	1	103%
Stalking on behalf of Minor	9	7	2	78%
Tort	11	15	23	136%
Total	511	633	253	124%

Criminal Division	Incoming	Outgoing	Pending End of Year Active	Clearance Rate
Civil Miscellaneous	18	14	22	78%
Civil Suspension	80	66	94	83%
Felony	290	313	329	108%
Domestic Violence	34	38	47	112%
Drugs	46	56	38	122%
Elder Abuse	0	0	0	
Motor Vehicle-DWI/DUI	11	17	10	155%
Motor Vehicle-Other	10	17	11	170%
Other	5	6	0	120%
Person	65	57	100	88%
Property	83	85	91	102%
Protection Order Violation	2	5	5	250%
Public Order	34	32	26	94%
Weapons	0	0	1	
Fish and Game	14	14	5	100%
Judicial Bureau Appeal	2	2	3	100%
Miscellaneous (Criminal)	0	0	30	
Misdemeanor	780	833	933	107%
Domestic Violence	41	54	54	132%
Drugs	26	25	37	96%
Elder Abuse	0	0	0	
Motor Vehicle-DWI/DUI	156	136	164	87%
Motor Vehicle-Other	111	158	134	142%
Other	8	9	0	113%
Person	54	55	78	102%
Property	121	131	140	108%
Protection Order Violation	11	12	20	109%
Public Order	252	252	306	100%
Weapons	0	1	0	
Uniform Fire Prevention Ticket	0	0	0	
Total	1184	1242	1416	105%
Investigative Requests	192	190	6	99%

Family Division	Incoming	Outgoing	Pending End of Year Active	Clearance Rate
Annulment	0	0	0	
Desertion	0	0	0	
Dissolution with Children	39	24	44	62%
Dissolution without Children	43	65	30	151%
Juvenile	74	73	75	99%
CHINS A- Abandoned or Abused	0	0	0	
CHINS B- Neglect	41	34	35	83%
CHINS C- Beyond Control	0	1	0	
CHINS D- Truant	7	7	8	100%
Delinquency	15	15	22	100%
Vulnerable Noncitizen Child	0	0	0	
Youthful Offender	11	16	10	145%
Mental Health	39	41	1	105%
Continued Treatment	10	11	1	110%
Involuntary Medication	0	0	0	
Involuntary Treatment	12	12	0	100%
Warrant for Emergency Exam	17	18	0	106%
Misc. Family	7	5	3	71%
Parentage	43	42	64	98%
Protection Order	237	232	12	98%
Extreme Risk Protection Order	3	3	0	100%
Registration of Foreign Abuse Prevention	0	0	0	
Relief from Abuse	203	200	7	99%
Relief from Abuse on behalf of a Minor	29	27	5	93%
Relief from Abuse/Neglect/Exploitation	2	2	0	100%
Registration of Foreign Order	1	2	1	200%
Separation	0	1	0	
UIFSA	6	4	3	67%
Total	489	489	233	100%

Probate Division	Incoming	Outgoing	Pending End of Year Active	Clearance Rate
Adoption	8	13	15	163%
Adult	2	2	1	100%
Adoption- Conversion	0	2	2	
Minor- Agency	2	6	1	300%
Minor- Private	4	3	11	75%
Surrender & Relinquishment	0	0	0	
Estate	149	76	684	51%
Guardianship Adult	22	20	43	91%
Involuntary	22	15	36	68%
Voluntary	5	5	7	100%
Guardianship Minor	23	12	188	52%
Custodial	16	9	151	56%
Financial	3	2	19	67%
Permanent	4	1	18	25%
Vulnerable Noncitizen Child	0	0	0	
Misc. Probate	1	1	2	100%
Trust	2	1	81	50%
Total	210	123	1013	59%
Administrative Matters	161	150	49	93%

CHITTENDEN

Civil Division	Incoming	Outgoing	Pending End of Year Active	Clearance Rate
Appeal	30	30	17	100%
Claim Against Government	10	8	8	80%
Collection	218	291	91	133%
Contract	41	60	39	146%
Declaratory Relief	11	18	8	164%
Employment	7	12	10	171%
Foreclosure	80	81	70	101%
Landlord/Tenant	439	347	176	79%
Abandoned Property	4	4	0	100%
Eviction	423	334	168	79%
Other	12	9	8	75%
Miscellaneous Civil	48	55	36	115%
Prisoner	84	56	55	67%
Real Property	6	5	7	83%
Small Claims	819	960	349	117%
Stalking	235	292	5	124%
Sexual Assault	10	12	0	120%
Sexual Assault on behalf of Minor	0	0	0	
Stalking	213	266	5	125%
Stalking on behalf of Minor	12	14	0	117%
Tort	129	144	181	112%
Total	2157	2359	1052	109%

Criminal Division	Incoming	Outgoing	Pending End of Year Active	Clearance Rate
Civil Miscellaneous	126	106	93	84%
Civil Suspension	295	317	93	107%
Felony	1167	1134	828	97%
Domestic Violence	131	128	78	98%
Drugs	90	93	59	103%
Elder Abuse	0	0	0	
Motor Vehicle-DWI/DUI	67	73	32	109%
Motor Vehicle-Other	108	79	73	73%
Other	1	3	0	300%
Person	271	281	239	104%
Property	439	426	313	97%
Protection Order Violation	4	2	2	50%
Public Order	55	49	31	89%
Weapons	1	0	1	
Fish and Game	7	11	15	157%
Judicial Bureau Appeal	20	27	9	135%
Miscellaneous (Criminal)	0	0	67	
Misdemeanor	3131	3105	2021	99%
Domestic Violence	157	162	91	103%
Drugs	91	89	61	98%
Elder Abuse	0	0	0	
Motor Vehicle-DWI/DUI	560	600	327	107%
Motor Vehicle-Other	461	504	265	109%
Other	9	11	1	
Person	372	355	241	95%
Property	853	804	580	94%
Protection Order Violation	84	93	59	111%
Public Order	541	486	393	90%
Weapons	3	1	3	33%
Uniform Fire Prevention Ticket	0	0	0	
Total	4746	4700	3126	99%
Investigative Requests	636	657	30	103%

Family Division	Incoming	Outgoing	Pending End of Year Active	Clearance Rate
Annulment	0	0	0	
Desertion	0	0	0	
Dissolution with Children	185	176	151	95%
Dissolution without Children	267	269	135	101%
Juvenile	334	336	264	101%
CHINS A- Abandoned or Abused	22	30	10	136%
CHINS B- Neglect	127	149	57	117%
CHINS C- Beyond Control	6	6	4	100%
CHINS D- Truant	15	10	11	67%
Delinquency	100	61	126	61%
Vulnerable Noncitizen Child	0	0	0	
Youthful Offender	64	80	56	125%
Mental Health	305	312	13	102%
Continued Treatment	52	53	1	102%
Involuntary Medication	5	5	0	100%
Involuntary Treatment	172	178	12	103%
Warrant for Emergency Exam	76	76	0	100%
Misc. Family	7	6	11	86%
Parentage	121	123	102	102%
Protection Order	714	711	43	100%
Extreme Risk Protection Order	4	5	0	125%
Registration of Foreign Abuse Prevention	0	0	0	
Relief from Abuse	642	639	29	100%
Relief from Abuse on behalf of a Minor	47	45	3	96%
Relief from Abuse/Neglect/Exploitation	21	22	0	105%
Registration of Foreign Order	5	7	2	140%
Separation	0	0	0	
UIFSA	11	18	7	164%
Total	1949	1958	717	100%

Probate Division	Incoming	Outgoing	Pending End of Year Active	Clearance Rate
Adoption	72	79	16	110%
Adult	9	7	2	78%
Conversion	0	1	0	
Minor- Agency	41	49	1	120%
Minor- Private	21	21	12	100%
Surrender & Relinquishment	1	1	1	100%
Estate	491	487	797	99%
Guardianship Adult	82	91	30	111%
Involuntary	82	78	24	95%
Voluntary	16	13	6	81%
Guardianship Minor	39	36	17	92%
Custodial	26	25	6	96%
Financial	7	7	8	100%
Permanent	5	4	2	80%
Vulnerable Noncitizen Child	1	0	1	
Misc. Probate	1	0	7	0%
Trust	9	11	24	122%
Total	710	704	891	99%
Administrative Matters	929	906	97	98%

ESSEX

Civil Division	Incoming	Outgoing	Pending End of Year Active	Clearance Rate
Appeal	1	0	1	
Claim Against Government	0	0	0	
Collection	7	12	6	171%
Contract	0	1	0	
Declaratory Relief	1	0	2	0%
Employment	0	0	0	
Foreclosure	8	8	9	100%
Landlord/Tenant	11	9	6	82%
Abandoned Property	0	0	0	
Eviction	11	9	6	82%
Other	0	0	0	
Miscellaneous Civil	7	3	5	43%
Prisoner	4	3	3	75%
Real Property	1	0	1	
Small Claims	35	54	10	154%
Stalking	19	11	9	58%
Sexual Assault	0	0	0	
Sexual Assault on behalf of Minor	0	0	0	
Stalking	16	8	9	50%
Stalking on behalf of Minor	3	3	0	100%
Tort	6	5	6	83%
Total	100	106	58	106%

Criminal Division	Incoming	Outgoing	Pending End of Year Active	Clearance Rate
Civil Miscellaneous	3	16	3	533%
Civil Suspension	2	4	4	200%
Felony	60	67	85	112%
Domestic Violence	12	10	11	83%
Drugs	1	5	4	500%
Elder Abuse	0	0	0	
Motor Vehicle-DWI/DUI	2	3	1	150%
Motor Vehicle-Other	3	2	3	67%
Other	0	0	0	
Person	11	11	20	100%
Property	27	24	31	89%
Protection Order Violation	0	2	0	
Public Order	4	10	15	250%
Weapons	0	0	0	
Fish and Game	4	7	2	175%
Judicial Bureau Appeal	0	0	1	
Miscellaneous (Criminal)	0	0	4	
Misdemeanor	110	104	134	95%
Domestic Violence	4	6	14	150%
Drugs	5	4	7	80%
Elder Abuse	0	0	0	
Motor Vehicle-DWI/DUI	11	13	16	118%
Motor Vehicle-Other	41	32	29	78%
Other	3	3	0	100%
Person	6	8	7	133%
Property	16	15	12	94%
Protection Order Violation	7	4	7	57%
Public Order	17	19	42	112%
Weapons	0	0	0	
Uniform Fire Prevention Ticket	0	0	0	
Total	179	198	233	111%
Investigative Requests	6	7	0	117%

Family Division	Incoming	Outgoing	Pending End of Year Active	Clearance Rate
Annulment	0	0	0	
Desertion	0	0	0	
Dissolution with Children	11	10	12	91%
Dissolution without Children	16	17	8	106%
Juvenile	14	11	15	79%
CHINS A- Abandoned or Abused	1	1	1	100%
CHINS B- Neglect	10	6	11	60%
CHINS C- Beyond Control	0	0	0	
CHINS D- Truant	0	0	0	
Delinquency	1	3	1	300%
Vulnerable Noncitizen Child	0	0	0	
Youthful Offender	2	1	2	50%
Mental Health	1	1	0	100%
Continued Treatment	1	1	0	100%
Involuntary Medication	0	0	0	
Involuntary Treatment	0	0	0	
Warrant for Emergency Exam	0	0	0	
Misc. Family	0	0	0	
Parentage	3	6	6	200%
Protection Order	48	44	43	92%
Extreme Risk Protection Order	1	1	0	100%
Registration of Foreign Abuse Prevention	0	0	0	
Relief from Abuse	43	39	5	91%
Relief from Abuse on behalf of a Minor	4	4	0	100%
Relief from Abuse/Neglect/Exploitation	0	0	0	
Registration of Foreign Order	0	1	1	
Separation	0	3	0	
UIFSA	3	0	0	
Total	96	93	47	97%

Probate Division	Incoming	Outgoing	Pending End of Year Active	Clearance Rate
Adoption	2	3	2	150%
Adult	2	3	1	150%
Conversion	0	0	1	
Minor- Agency	0	0	0	
Minor- Private	0	0	0	
Surrender & Relinquishment	0	0	0	
Estate	30	13	165	43%
Guardianship Adult	4	5	4	125%
Involuntary	4	5	2	125%
Voluntary	0	0	2	
Guardianship Minor	6	5	7	83%
Custodial	6	5	7	83%
Financial	0	0	0	
Permanent	0	0	0	
Vulnerable Noncitizen Child	0	0	0	
Misc. Probate	0	0	1	
Trust	0	0	4	
Total	42	26	183	62%
Administrative Matters	55	52	8	95%

FRANKLIN

Civil Division	Incoming	Outgoing	Pending End of Year Active	Clearance Rate
Appeal	18	20	4	111%
Claim Against Government	0	0	0	
Collection	101	120	33	119%
Contract	8	10	12	125%
Declaratory Relief	7	5	12	71%
Employment	3	1	5	33%
Foreclosure	43	42	42	98%
Landlord/Tenant	144	124	51	86%
Abandoned Property	4	4	0	100%
Eviction	138	120	49	87%
Other	2	0	2	0%
Miscellaneous Civil	13	10	10	77%
Prisoner	48	35	34	73%
Real Property	7	3	8	43%
Small Claims	312	338	86	108%
Stalking	162	155	14	96%
Sexual Assault	0	0	0	
Sexual Assault on behalf of Minor	0	0	0	
Stalking	156	150	13	96%
Stalking on behalf of Minor	6	5	1	83%
Tort	26	27	34	104%
Total	892	890	345	100%

Criminal Division	Incoming	Outgoing	Pending End of Year Active	Clearance Rate
Civil Miscellaneous	20	14	11	70%
Civil Suspension	68	90	57	132%
Felony	454	502	306	111%
Domestic Violence	64	83	27	130%
Drugs	53	41	37	77%
Elder Abuse	2	1	1	50%
Motor Vehicle-DWI/DUI	26	38	17	146%
Motor Vehicle-Other	37	48	20	130%
Other	6	6	0	100%
Person	86	111	101	129%
Property	144	135	81	94%
Protection Order Violation	4	6	4	150%
Public Order	31	32	17	103%
Weapons	1	1	1	100%
Fish and Game	15	33	9	220%
Judicial Bureau Appeal	1	1	0	100%
Miscellaneous (Criminal)	0	0	1	
Misdemeanor	1488	1808	741	122%
Domestic Violence	56	85	19	152%
Drugs	55	54	25	98%
Elder Abuse	2	1	1	50%
Motor Vehicle-DWI/DUI	221	283	115	128%
Motor Vehicle-Other	373	506	195	136%
Other	13	16	0	123%
Person	119	135	78	113%
Property	306	299	146	98%
Protection Order Violation	39	47	12	121%
Public Order	299	379	147	127%
Weapons	5	3	3	60%
Uniform Fire Prevention Ticket	0	0	0	
Total	2046	2448	1125	120%
Investigative Requests	189	236	11	125%

Family Division	Incoming	Outgoing	Pending End of Year Active	Clearance Rate
Annulment	0	0	0	
Desertion	0	0	0	
Dissolution with Children	67	58	67	87%
Dissolution without Children	91	91	54	100%
Juvenile	244	254	195	104%
CHINS A- Abandoned or Abused	5	5	4	100%
CHINS B- Neglect	43	63	48	147%
CHINS C- Beyond Control	10	12	7	120%
CHINS D- Truant	18	14	18	78%
Delinquency	104	104	77	100%
Vulnerable Noncitizen Child	0	0	0	
Youthful Offender	64	56	41	88%
Mental Health	22	21	1	95%
Continued Treatment	9	9	0	100%
Involuntary Medication	0	0	0	
Involuntary Treatment	5	4	1	80%
Warrant for Emergency Exam	8	8	0	100%
Misc. Family	3	2	2	67%
Parentage	85	78	77	92%
Protection Order	309	297	43	96%
Extreme Risk Protection Order	2	1	1	50%
Registration of Foreign Abuse Prevention	0	0	0	
Relief from Abuse	274	267	25	97%
Relief from Abuse on behalf of a Minor	30	26	4	87%
Relief from Abuse/Neglect/Exploitation	3	3	0	100%
Registration of Foreign Order	1	1	1	100%
Separation	0	2	0	
UIFSA	5	2	4	40%
Total	827	806	431	97%

Probate Division	Incoming	Outgoing	Pending End of Year Active	Clearance Rate
Adoption	32	28	8	88%
Adult	8	9	0	113%
Conversion	0	0	0	
Minor- Agency	19	16	4	84%
Minor- Private	5	3	4	60%
Surrender & Relinquishment	0	0	0	
Estate	181	123	357	68%
Guardianship Adult	42	9	43	21%
Involuntary	31	8	30	26%
Voluntary	11	1	13	9%
Guardianship Minor	41	16	43	39%
Custodial	29	10	32	34%
Financial	8	5	7	63%
Permanent	4	1	4	25%
Vulnerable Noncitizen Child	0	0	0	
Misc. Probate	1	0	1	0%
Trust	2	1	2	50%
Total	299	177	454	59%
Administrative Matters	185	192	7	104%

GRAND ISLE

Civil Division	Incoming	Outgoing	Pending End of Year Active	Clearance Rate
Appeal	1	0	1	0%
Claim Against Government	1	1	0	100%
Collection	18	17	20	94%
Contract	9	2	11	22%
Declaratory Relief	2	1	4	50%
Employment	0	0	0	
Foreclosure	12	13	15	108%
Landlord/Tenant	17	7	14	41%
Abandoned Property	0	0	0	
Eviction	17	7	14	41%
Other	0	0	0	
Miscellaneous Civil	1	2	0	200%
Prisoner	1	1	1	100%
Real Property	0	0	1	
Small Claims	44	49	30	111%
Stalking	26	28	0	108%
Sexual Assault	0	0	0	
Sexual Assault on behalf of Minor	0	0	0	
Stalking	24	26	0	108%
Stalking on behalf of Minor	2	2	0	100%
Tort	2	2	3	100%
Total	134	123	100	92%

Criminal Division	Incoming	Outgoing	Pending End of Year Active	Clearance Rate
Civil Miscellaneous	5	8	7	160%
Civil Suspension	8	10	7	125%
Felony	26	27	22	104%
Domestic Violence	6	4	6	67%
Drugs	4	1	5	25%
Elder Abuse	0	0	0	
Motor Vehicle-DWI/DUI	4	7	1	175%
Motor Vehicle-Other	0	0	0	
Other	0	0	0	
Person	2	5	5	250%
Property	7	6	4	86%
Protection Order Violation	0	0	0	
Public Order	3	4	1	133%
Weapons	0	0	0	
Fish and Game	3	10	1	333%
Judicial Bureau Appeal	0	0	1	
Miscellaneous (Criminal)	0	0	4	
Misdemeanor	121	140	61	116%
Domestic Violence	5	5	6	100%
Drugs	3	2	2	67%
Elder Abuse	0	0	0	
Motor Vehicle-DWI/DUI	17	16	9	94%
Motor Vehicle-Other	39	50	20	128%
Other	1	1	0	100%
Person	11	8	9	73%
Property	13	15	5	115%
Protection Order Violation	8	9	0	113%
Public Order	24	34	10	142%
Weapons	0	0	0	
Uniform Fire Prevention Ticket	0	0	0	
Total	163	195	103	120%
Investigative Requests	14	10	4	71%

Family Division	Incoming	Outgoing	Pending End of Year Active	Clearance Rate
Annulment	0	0	0	
Desertion	0	0	0	
Dissolution with Children	6	5	9	83%
Dissolution without Children	12	10	6	83%
Juvenile	26	22	25	85%
CHINS A- Abandoned or Abused	2	1	2	50%
CHINS B- Neglect	7	3	11	43%
CHINS C- Beyond Control	1	1	1	100%
CHINS D- Truant	3	4	4	133%
Delinquency	6	5	3	83%
Vulnerable Noncitizen Child	0	0	0	
Youthful Offender	7	8	4	114%
Mental Health	1	1	3	100%
Continued Treatment	0	0	0	
Involuntary Medication	0	0	0	
Involuntary Treatment	1	1	0	100%
Warrant for Emergency Exam	0	0	0	
Misc. Family	0	0	0	
Parentage	8	4	9	50%
Protection Order	51	50	43	98%
Extreme Risk Protection Order	0	0	0	
Registration of Foreign Abuse Prevention	0	0	0	
Relief from Abuse	40	39	1	98%
Relief from Abuse on behalf of a Minor	10	10	0	100%
Relief from Abuse/Neglect/Exploitation	1	1	0	100%
Registration of Foreign Order	1	0	1	
Separation	0	0	0	
UIFSA	4	3	1	75%
Total	109	95	52	87%

Probate Division	Incoming	Outgoing	Pending End of Year Active	Clearance Rate
Adoption	4	5	0	125%
Adult	0	0	0	
Conversion	0	0	0	
Minor- Agency	4	4	0	100%
Minor- Private	0	1	0	
Surrender & Relinquishment	0	0	0	
Estate	34	24	89	71%
Guardianship Adult	3	1	7	33%
Involuntary	3	1	7	33%
Voluntary	0	0	0	
Guardianship Minor	0	0	5	
Custodial	0	0	2	
Financial	0	0	0	
Permanent	0	0	3	
Vulnerable Noncitizen Child	0	0	0	
Misc. Probate	1	1	0	
Trust	0	0	3	
Total	42	31	104	74%
Administrative Matters	67	69	3	103%

LAMOILLE

Civil Division	Incoming	Outgoing	Pending End of Year Active	Clearance Rate
Appeal	5	4	4	80%
Claim Against Government	0	1	0	
Collection	41	49	19	120%
Contract	12	12	17	100%
Declaratory Relief	6	6	8	100%
Employment	0	1	0	
Foreclosure	45	22	39	49%
Landlord/Tenant	38	50	27	132%
Abandoned Property	1	1	0	100%
Eviction	37	48	27	130%
Other	0	1	0	
Miscellaneous Civil	14	7	9	50%
Prisoner	1	4	1	400%
Real Property	2	1	2	50%
Small Claims	149	176	72	118%
Stalking	38	41	1	108%
Sexual Assault	1	1	0	100%
Sexual Assault on behalf of Minor	0	0	0	
Stalking	36	38	1	106%
Stalking on behalf of Minor	1	2	0	200%
Tort	19	21	28	111%
Total	370	395	227	107%

Criminal Division	Incoming	Outgoing	Pending End of Year Active	Clearance Rate
Civil Miscellaneous	7	7	5	100%
Civil Suspension	87	95	87	109%
Felony	217	185	221	85%
Domestic Violence	21	18	31	86%
Drugs	28	24	18	86%
Elder Abuse	0	0	0	
Motor Vehicle-DWI/DUI	26	19	33	73%
Motor Vehicle-Other	14	12	9	86%
Other	7	8	0	114%
Person	43	35	63	81%
Property	63	58	53	92%
Protection Order Violation	1	3	1	300%
Public Order	14	8	13	57%
Weapons	0	0	0	
Fish and Game	10	5	8	50%
Judicial Bureau Appeal	3	3	0	100%
Miscellaneous (Criminal)	0	0	0	
Misdemeanor	851	920	579	108%
Domestic Violence	17	21	20	124%
Drugs	61	58	27	95%
Elder Abuse	0	0	0	
Motor Vehicle-DWI/DUI	175	209	131	119%
Motor Vehicle-Other	221	281	109	127%
Other	10	8	2	80%
Person	28	30	32	107%
Property	158	135	111	85%
Protection Order Violation	14	16	25	114%
Public Order	166	162	120	98%
Weapons	1	0	2	
Uniform Fire Prevention Ticket	0	0	0	
Total	1175	1215	900	103%
Investigative Requests	183	209	15	114%

Family Division	Incoming	Outgoing	Pending End of Year Active	Clearance Rate
Annulment	0	0	1	
Desertion	0	0	0	
Dissolution with Children	33	31	29	94%
Dissolution without Children	46	50	17	109%
Juvenile	89	118	97	133%
CHINS A- Abandoned or Abused	1	0	3	
CHINS B- Neglect	28	48	49	171%
CHINS C- Beyond Control	2	2	1	100%
CHINS D- Truant	13	19	10	146%
Delinquency	40	44	27	110%
Vulnerable Noncitizen Child	0	0	0	
Youthful Offender	5	5	7	100%
Mental Health	32	31	4	97%
Continued Treatment	15	15	3	100%
Involuntary Medication	0	0	0	
Involuntary Treatment	11	10	1	91%
Warrant for Emergency Exam	6	6	0	100%
Misc. Family	1	0	2	
Parentage	26	29	24	112%
Protection Order	140	135	8	96%
Extreme Risk Protection Order	0	0	0	
Registration of Foreign Abuse Prevention	0	0	0	
Relief from Abuse	121	116	5	96%
Relief from Abuse on behalf of a Minor	14	16	1	114%
Relief from Abuse/Neglect/Exploitation	5	3	2	60%
Registration of Foreign Order	2	0	2	
Separation	0	0	0	
UIFSA	2	2	0	100%
Total	371	396	184	107%

Probate Division	Incoming	Outgoing	Pending End of Year Active	Clearance Rate
Adoption	6	6	2	100%
Adult	3	3	0	100%
Conversion	0	0	0	
Minor- Agency	0	0	0	
Minor- Private	3	3	2	100%
Surrender & Relinquishment	0	0	0	
Estate	103	86	163	83%
Guardianship Adult	9	18	3	200%
Involuntary	8	16	3	200%
Voluntary	1	2	0	200%
Guardianship Minor	7	10	1	143%
Custodial	2	5	1	250%
Financial	2	2	0	100%
Permanent	3	3	0	100%
Vulnerable Noncitizen Child	0	0	0	
Misc. Probate	0	0	0	
Trust	0	2	0	
Total	125	122	169	98%
Administrative Matters	185	179	10	97%

ORANGE

Civil Division	Incoming	Outgoing	Pending End of Year Active	Clearance Rate
Appeal	1	1	1	100%
Claim Against Government	0	0	0	
Collection	58	58	27	100%
Contract	4	4	7	100%
Declaratory Relief	8	8	6	100%
Employment	0	0	0	
Foreclosure	19	23	18	121%
Landlord/Tenant	53	47	28	89%
Abandoned Property	3	2	2	67%
Eviction	50	44	26	88%
Other	0	1	0	
Miscellaneous Civil	6	6	3	100%
Prisoner	2	1	1	50%
Real Property	2	3	5	150%
Small Claims	113	113	78	100%
Stalking	60	58	3	97%
Sexual Assault	1	0	1	
Sexual Assault on behalf of Minor	3	3	0	100%
Stalking	47	46	2	98%
Stalking on behalf of Minor	9	9	0	100%
Tort	12	11	16	92%
Total	338	333	193	99%

Criminal Division	Incoming	Outgoing	Pending End of Year Active	Clearance Rate
Civil Miscellaneous	11	13	5	118%
Civil Suspension	38	51	22	134%
Felony	158	135	111	85%
Domestic Violence	22	23	14	105%
Drugs	20	19	11	95%
Elder Abuse	0	0	0	
Motor Vehicle-DWI/DUI	12	10	11	83%
Motor Vehicle-Other	10	11	5	110%
Other	0	1	0	
Person	24	21	31	88%
Property	57	40	31	70%
Protection Order Violation	4	3	2	75%
Public Order	9	7	6	78%
Weapons	0	0	0	
Fish and Game	3	4	1	133%
Judicial Bureau Appeal	1	1	1	100%
Miscellaneous (Criminal)	0	0	16	
Misdemeanor	456	467	255	102%
Domestic Violence	28	35	19	125%
Drugs	15	14	8	93%
Elder Abuse	0	0	0	
Motor Vehicle-DWI/DUI	93	110	49	118%
Motor Vehicle-Other	100	90	61	90%
Other	1	1	2	100%
Person	24	27	17	113%
Property	55	51	32	93%
Protection Order Violation	19	15	11	79%
Public Order	119	123	55	103%
Weapons	2	1	1	50%
Uniform Fire Prevention Ticket	0	0	0	
Total	667	671	411	101%
Investigative Requests	80	78	5	98%

Family Division	Incoming	Outgoing	Pending End of Year Active	Clearance Rate
Annulment	0	0	0	
Desertion	0	0	0	
Dissolution with Children	46	31	52	67%
Dissolution without Children	59	56	27	95%
Juvenile	39	60	17	154%
CHINS A- Abandoned or Abused	0	0	0	
CHINS B- Neglect	8	19	0	238%
CHINS C- Beyond Control	0	0	0	
CHINS D- Truant	10	9	5	90%
Delinquency	16	23	9	144%
Vulnerable Noncitizen Child	0	0	0	
Youthful Offender	5	9	3	180%
Mental Health	21	20	1	95%
Continued Treatment	15	14	1	93%
Involuntary Medication	0	0	0	
Involuntary Treatment	2	2	0	100%
Warrant for Emergency Exam	4	4	0	100%
Misc. Family	4	3	1	75%
Parentage	33	34	34	103%
Protection Order	172	169	7	98%
Extreme Risk Protection Order	2	2	0	100%
Registration of Foreign Abuse Prevention	0	0	0	
Relief from Abuse	129	126	5	98%
Relief from Abuse on behalf of a Minor	41	41	2	100%
Relief from Abuse/Neglect/Exploitation	0	0	0	
Registration of Foreign Order	6	3	4	50%
Separation	0	0	0	
UIFSA	5	9	1	180%
Total	385	385	144	100%

Probate Division	Incoming	Outgoing	Pending End of Year Active	Clearance Rate
Adoption	11	13	5	118%
Adult	4	4	2	100%
Conversion	0	0	0	
Minor- Agency	5	5	0	100%
Minor- Private	2	4	3	200%
Surrender & Relinquishment	0	0	0	
Estate	132	75	371	57%
Guardianship Adult	21	26	11	124%
Involuntary	19	23	10	121%
Voluntary	2	3	1	150%
Guardianship Minor	21	47	17	224%
Custodial	18	41	14	228%
Financial	2	5	2	250%
Permanent	1	1	1	100%
Vulnerable Noncitizen Child	0	0	0	
Misc. Probate	3	3	1	100%
Trust	5	3	21	60%
Total	193	167	426	87%
Administrative Matters	159	160	18	101%

ORLEANS

Civil Division	Incoming	Outgoing	Pending End of Year Active	Clearance Rate
Appeal	28	24	9	86%
Claim Against Government	1	6	3	600%
Collection	53	57	24	108%
Contract	15	10	19	67%
Declaratory Relief	2	4	3	200%
Employment	1	2	1	200%
Foreclosure	24	26	31	108%
Landlord/Tenant	58	64	31	110%
Abandoned Property	0	0	0	
Eviction	58	63	31	109%
Other	0	1	0	
Miscellaneous Civil	12	13	11	108%
Prisoner	151	130	77	86%
Real Property	6	6	8	100%
Small Claims	173	225	72	130%
Stalking	61	52	11	85%
Sexual Assault	2	1	1	50%
Sexual Assault on behalf of Minor	2	1	2	50%
Stalking	54	47	8	87%
Stalking on behalf of Minor	3	3	0	100%
Tort	21	19	42	90%
Total	606	638	342	105%

Criminal Division	Incoming	Outgoing	Pending End of Year Active	Clearance Rate
Civil Miscellaneous	19	14	23	74%
Civil Suspension	41	58	57	141%
Felony	380	334	542	88%
Domestic Violence	45	38	65	84%
Drugs	37	46	41	124%
Elder Abuse	0	0	0	
Motor Vehicle-DWI/DUI	17	17	31	100%
Motor Vehicle-Other	16	24	31	150%
Other	3	1	3	33%
Person	101	75	176	74%
Property	105	86	124	82%
Protection Order Violation	6	6	7	100%
Public Order	50	41	63	82%
Weapons	0	0	1	
Fish and Game	22	18	15	82%
Judicial Bureau Appeal	1	0	1	0%
Miscellaneous (Criminal)	0	0	0	
Misdemeanor	852	728	1044	85%
Domestic Violence	30	35	62	117%
Drugs	40	31	24	78%
Elder Abuse	0	0	0	
Motor Vehicle-DWI/DUI	100	99	115	99%
Motor Vehicle-Other	191	160	213	84%
Other	9	9	4	100%
Person	45	41	64	91%
Property	151	134	175	89%
Protection Order Violation	18	14	27	78%
Public Order	268	205	359	76%
Weapons	0	0	1	
Uniform Fire Prevention Ticket	0	0	0	
Total	1315	1152	1682	88%
Investigative Requests	164	177	8	108%

Family Division	Incoming	Outgoing	Pending End of Year Active	Clearance Rate
Annulment	0	0	0	
Desertion	0	0	0	
Dissolution with Children	48	41	46	85%
Dissolution without Children	56	67	34	120%
Juvenile	142	93	135	65%
CHINS A- Abandoned or Abused	13	0	17	0%
CHINS B- Neglect	49	33	53	67%
CHINS C- Beyond Control	6	7	3	117%
CHINS D- Truant	1	4	1	400%
Delinquency	56	39	46	70%
Vulnerable Noncitizen Child	0	0	0	
Youthful Offender	17	10	15	59%
Mental Health	37	37	1	100%
Continued Treatment	5	5	1	100%
Involuntary Medication	0	0	0	
Involuntary Treatment	14	14	0	100%
Warrant for Emergency Exam	18	18	0	100%
Misc. Family	2	2	1	100%
Parentage	42	51	35	121%
Protection Order	191	183	17	96%
Extreme Risk Protection Order	1	0	1	
Registration of Foreign Abuse Prevention	0	0	0	
Relief from Abuse	154	146	14	95%
Relief from Abuse on behalf of a Minor	34	35	2	103%
Relief from Abuse/Neglect/Exploitation	2	2	0	100%
Registration of Foreign Order	2	1	2	50%
Separation	0	0	0	
UIFSA	2	4	1	200%
Total	522	479	272	92%

Probate Division	Incoming	Outgoing	Pending End of Year Active	Clearance Rate
Adoption	25	17	12	68%
Adult	8	7	1	88%
Conversion	0	0	0	
Minor- Agency	12	9	3	75%
Minor- Private	5	1	8	20%
Surrender & Relinquishment	0	0	0	
Estate	128	168	308	131%
Guardianship Adult	36	65	55	181%
Involuntary	31	58	48	187%
Voluntary	5	7	7	140%
Guardianship Minor	25	29	41	116%
Custodial	16	24	31	150%
Financial	7	2	7	29%
Permanent	2	3	3	150%
Vulnerable Noncitizen Child	0	0	0	
Misc. Probate	1	0	1	0%
Trust	1	5	17	500%
Total	216	284	434	131%
Administrative Matters	139	164	7	118%

RUTLAND

Civil Division	Incoming	Outgoing	Pending End of Year Active	Clearance Rate
Appeal	21	23	8	110%
Claim Against Government	1	4	0	400%
Collection	108	102	42	94%
Contract	13	8	16	62%
Declaratory Relief	4	6	3	150%
Employment	4	0	5	
Foreclosure	62	68	46	110%
Landlord/Tenant	260	207	99	80%
Abandoned Property	1	2	0	200%
Eviction	255	204	96	80%
Other	4	1	3	25%
Miscellaneous Civil	32	23	19	72%
Prisoner	26	15	22	58%
Real Property	1	7	2	700%
Small Claims	341	403	98	118%
Stalking	174	174	10	100%
Sexual Assault	3	2	1	67%
Sexual Assault on behalf of Minor	0	0	0	
Stalking	151	155	6	103%
Stalking on behalf of Minor	20	17	3	85%
Tort	43	34	55	79%
Total	1090	1074	425	99%

Criminal Division	Incoming	Outgoing	Pending End of Year Active	Clearance Rate
Civil Miscellaneous	19	23	7	121%
Civil Suspension	83	135	83	163%
Felony	570	554	625	97%
Domestic Violence	102	118	84	116%
Drugs	66	56	56	85%
Elder Abuse	0	0	0	
Motor Vehicle-DWI/DUI	16	26	27	163%
Motor Vehicle-Other	19	20	32	105%
Other	3	6	0	200%
Person	139	122	214	88%
Property	184	157	173	85%
Protection Order Violation	18	16	19	89%
Public Order	22	33	19	150%
Weapons	1	0	1	
Fish and Game	22	34	116	155%
Judicial Bureau Appeal	2	4	4	200%
Miscellaneous (Criminal)	0	0	60	
Misdemeanor	1849	2092	1523	113%
Domestic Violence	92	92	132	100%
Drugs	68	68	32	100%
Elder Abuse	0	0	0	
Motor Vehicle-DWI/DUI	224	307	222	137%
Motor Vehicle-Other	308	428	235	139%
Other	19	20	3	105%
Person	143	149	154	104%
Property	659	647	404	98%
Protection Order Violation	50	57	63	114%
Public Order	286	324	277	113%
Weapons	0	0	1	
Uniform Fire Prevention Ticket	0	0	0	
Total	2545	2842	2418	112%
Investigative Requests	236	228	21	97%

Family Division	Incoming	Outgoing	Pending End of Year Active	Clearance Rate
Annulment	0	0	0	
Desertion	0	0	0	
Dissolution with Children	86	74	77	86%
Dissolution without Children	121	122	43	101%
Juvenile	168	173	77	103%
CHINS A- Abandoned or Abused	2	1	1	50%
CHINS B- Neglect	73	87	31	119%
CHINS C- Beyond Control	6	1	5	17%
CHINS D- Truant	15	18	10	120%
Delinquency	60	50	52	83%
Vulnerable Noncitizen Child	0	0	0	
Youthful Offender	12	16	6	133%
Mental Health	121	112	11	93%
Continued Treatment	27	25	3	93%
Involuntary Medication	10	10	0	100%
Involuntary Treatment	52	46	7	88%
Warrant for Emergency Exam	32	31	1	97%
Misc. Family	1	3	1	300%
Parentage	99	88	63	89%
Protection Order	448	455	22	102%
Extreme Risk Protection Order	2	3	0	150%
Registration of Foreign Abuse Prevention	0	0	0	
Relief from Abuse	398	407	17	102%
Relief from Abuse on behalf of a Minor	35	33	4	94%
Relief from Abuse/Neglect/Exploitation	13	12	1	92%
Registration of Foreign Order	1	3	0	300%
Separation	0	0	0	
UIFSA	14	11	6	79%
Total	1059	1041	328	98%

Probate Division	Incoming	Outgoing	Pending End of Year Active	Clearance Rate
Adoption	28	31	18	111%
Adult	7	6	2	86%
Conversion	0	3	0	
Minor- Agency	10	12	2	120%
Minor- Private	11	10	14	91%
Surrender & Relinquishment	0	0	0	
Estate	310	277	541	89%
Guardianship Adult	50	61	10	122%
Involuntary	43	52	9	121%
Voluntary	7	9	1	129%
Guardianship Minor	43	50	13	116%
Custodial	32	35	11	109%
Financial	5	7	2	140%
Permanent	6	8	0	133%
Vulnerable Noncitizen Child	0	0	0	
Misc. Probate	6	7	1	117%
Trust	1	5	5	500%
Total	438	431	588	98%
Administrative Matters	486	470	24	97%

WASHINGTON

Civil Division	Incoming	Outgoing	Pending End of Year Active	Clearance Rate
Appeal	20	30	11	150%
Claim Against Government	9	10	7	111%
Collection	125	130	44	104%
Contract	10	18	15	180%
Declaratory Relief	10	10	9	100%
Employment	0	2	1	
Foreclosure	39	53	47	136%
Landlord/Tenant	126	109	52	87%
Abandoned Property	1	1	0	100%
Eviction	122	107	49	88%
Other	3	1	3	33%
Miscellaneous Civil	39	42	24	108%
Prisoner	88	101	75	115%
Real Property	4	1	5	25%
Small Claims	267	317	128	119%
Stalking	124	124	4	100%
Sexual Assault	1	2	0	200%
Sexual Assault on behalf of Minor	1	1	0	100%
Stalking	108	107	4	99%
Stalking on behalf of Minor	14	14	0	100%
Tort	37	37	54	100%
Total	898	984	476	110%

Criminal Division	Incoming	Outgoing	Pending End of Year Active	Clearance Rate
Civil Miscellaneous	28	31	15	111%
Civil Suspension	108	154	55	143%
Felony	606	693	335	114%
Domestic Violence	58	66	35	114%
Drugs	104	130	56	125%
Elder Abuse	0	0	0	
Motor Vehicle-DWI/DUI	45	50	22	111%
Motor Vehicle-Other	45	50	21	111%
Other	3	3	1	100%
Person	132	146	103	111%
Property	147	154	72	105%
Protection Order Violation	8	10	4	125%
Public Order	63	83	20	132%
Weapons	1	1	1	100%
Fish and Game	11	12	18	109%
Judicial Bureau Appeal	4	10	6	250%
Miscellaneous (Criminal)	0	0	39	
Misdemeanor	1886	2034	968	108%
Domestic Violence	81	96	47	119%
Drugs	135	136	65	101%
Elder Abuse	1	1	1	
Motor Vehicle-DWI/DUI	211	243	111	115%
Motor Vehicle-Other	401	433	215	108%
Other	9	10	1	111%
Person	165	169	85	102%
Property	339	350	144	103%
Protection Order Violation	58	66	32	114%
Public Order	481	528	262	110%
Weapons	5	2	5	40%
Uniform Fire Prevention Ticket	0	0	0	
Total	2643	2934	1436	111%
Investigative Requests	203	200	20	99%

Family Division	Incoming	Outgoing	Pending End of Year Active	Clearance Rate
Annulment	0	0	0	
Desertion	0	0	0	
Dissolution with Children	95	91	81	96%
Dissolution without Children	117	117	54	100%
Juvenile	202	216	129	107%
CHINS A- Abandoned or Abused	7	5	4	71%
CHINS B- Neglect	17	61	13	359%
CHINS C- Beyond Control	5	4	2	80%
CHINS D- Truant	12	11	7	92%
Delinquency	94	78	68	83%
Vulnerable Noncitizen Child	0	0	0	
Youthful Offender	67	57	35	85%
Mental Health	134	141	11	105%
Continued Treatment	45	52	4	116%
Involuntary Medication	23	25	0	109%
Involuntary Treatment	65	63	7	97%
Warrant for Emergency Exam	1	1	0	100%
Misc. Family	7	3	4	43%
Parentage	73	64	75	88%
Protection Order	342	372	18	109%
Extreme Risk Protection Order	1	1	0	100%
Registration of Foreign Abuse Prevention	0	0	0	
Relief from Abuse	289	316	14	109%
Relief from Abuse on behalf of a Minor	51	54	3	106%
Relief from Abuse/Neglect/Exploitation	1	1	1	100%
Registration of Foreign Order	4	2	4	50%
Separation	0	0	0	
UIFSA	8	9	2	113%
Total	982	1015	378	103%

Probate Division	Incoming	Outgoing	Pending End of Year Active	Clearance Rate
Adoption	20	10	21	50%
Adult	3	2	5	67%
Conversion	0	0	0	
Minor- Agency	12	6	7	50%
Minor- Private	5	2	9	40%
Surrender & Relinquishment	0	0	0	
Estate	205	316	667	154%
Guardianship Adult	48	37	38	77%
Involuntary	36	30	28	83%
Voluntary	12	7	10	58%
Guardianship Minor	31	28	25	90%
Custodial	15	13	11	87%
Financial	15	10	10	67%
Permanent	1	5	4	500%
Vulnerable Noncitizen Child	0	0	0	
Misc. Probate	5	3	6	60%
Trust	2	5	29	250%
Total	311	399	786	128%
Administrative Matters	445	447	55	100%

WINDHAM

Civil Division	Incoming	Outgoing	Pending End of Year Active	Clearance Rate
Appeal	8	13	6	163%
Claim Against Government	3	0	4	
Collection	82	92	26	112%
Contract	12	12	13	100%
Declaratory Relief	4	7	6	175%
Employment	1	4	3	400%
Foreclosure	39	42	37	108%
Landlord/Tenant	174	136	86	78%
Abandoned Property	2	3	1	150%
Eviction	170	132	84	78%
Other	2	1	1	50%
Miscellaneous Civil	26	18	20	69%
Prisoner	23	15	16	65%
Real Property	5	7	7	140%
Small Claims	297	338	111	114%
Stalking	83	73	15	88%
Sexual Assault	0	0	0	
Sexual Assault on behalf of Minor	0	0	0	
Stalking	79	70	14	89%
Stalking on behalf of Minor	4	3	1	75%
Tort	31	29	51	94%
Total	788	786	401	100%

Criminal Division	Incoming	Outgoing	Pending End of Year Active	Clearance Rate
Civil Miscellaneous	44	16	56	36%
Civil Suspension	85	116	40	136%
Felony	448	496	392	111%
Domestic Violence	88	103	65	117%
Drugs	78	105	60	135%
Elder Abuse	0	0	0	
Motor Vehicle-DWI/DUI	27	32	26	119%
Motor Vehicle-Other	13	14	9	108%
Other	4	4	0	100%
Person	91	94	104	103%
Property	125	123	104	98%
Protection Order Violation	6	10	10	167%
Public Order	16	11	14	69%
Weapons	0	0	0	
Fish and Game	15	14	4	93%
Judicial Bureau Appeal	3	5	4	167%
Miscellaneous (Criminal)	0	1	164	
Misdemeanor	1374	1517	972	110%
Domestic Violence	80	92	79	115%
Drugs	85	116	56	136%
Elder Abuse	0	0	0	
Motor Vehicle-DWI/DUI	200	246	110	123%
Motor Vehicle-Other	176	185	92	105%
Other	6	6	0	100%
Person	130	140	99	108%
Property	361	363	248	101%
Protection Order Violation	24	25	29	104%
Public Order	308	342	256	111%
Weapons	4	2	3	50%
Uniform Fire Prevention Ticket	0	0	0	
Total	1969	2165	1632	110%
Investigative Requests	225	560	46	249%

Family Division	Incoming	Outgoing	Pending End of Year Active	Clearance Rate
Annulment	0	0	0	
Desertion	0	0	0	
Dissolution with Children	59	45	60	76%
Dissolution without Children	84	79	49	94%
Juvenile	84	108	39	129%
CHINS A- Abandoned or Abused	0	0	0	
CHINS B- Neglect	42	54	14	129%
CHINS C- Beyond Control	3	6	0	200%
CHINS D- Truant	8	6	5	75%
Delinquency	29	39	19	134%
Vulnerable Noncitizen Child	0	0	0	
Youthful Offender	2	3	1	150%
Mental Health	265	267	18	101%
Continued Treatment	20	21	4	105%
Involuntary Medication	45	45	2	100%
Involuntary Treatment	177	178	12	101%
Warrant for Emergency Exam	23	23	0	100%
Misc. Family	3	4	0	133%
Parentage	70	65	69	93%
Protection Order	228	242	43	106%
Extreme Risk Protection Order	0	0	0	
Registration of Foreign Abuse Prevention	0	0	0	
Relief from Abuse	193	203	6	105%
Relief from Abuse on behalf of a Minor	32	36	0	113%
Relief from Abuse/Neglect/Exploitation	3	3	0	100%
Registration of Foreign Order	2	4	1	200%
Separation	0	0	0	
UIFSA	8	20	5	250%
Total	803	834	247	104%

Probate Division	Incoming	Outgoing	Pending End of Year Active	Clearance Rate
Adoption	19	23	3	121%
Adult	0	0	0	
Conversion	0	1	0	
Minor- Agency	16	16	1	100%
Minor- Private	3	6	2	200%
Surrender & Relinquishment	0	0	0	
Estate	225	214	496	95%
Guardianship Adult	30	22	21	73%
Involuntary	25	19	16	76%
Voluntary	5	3	5	60%
Guardianship Minor	31	23	21	74%
Custodial	23	15	14	65%
Financial	7	5	7	71%
Permanent	1	3	0	300%
Vulnerable Noncitizen Child	0	0	0	
Misc. Probate	4	5	0	125%
Trust	2	3	3	150%
Total	311	290	544	93%
Administrative Matters	344	331	33	96%

WINDSOR

Civil Division	Incoming	Outgoing	Pending End of Year Active	Clearance Rate
Appeal	27	27	7	100%
Claim Against Government	2	2	4	100%
Collection	98	102	39	104%
Contract	13	4	14	31%
Declaratory Relief	4	7	5	175%
Employment	3	2	3	67%
Foreclosure	59	74	58	125%
Landlord/Tenant	157	148	69	94%
Abandoned Property	1	2	0	200%
Eviction	149	138	67	93%
Other	7	8	2	114%
Miscellaneous Civil	55	19	50	35%
Prisoner	51	76	20	149%
Real Property	9	9	14	100%
Small Claims	285	428	79	150%
Stalking	118	105	17	89%
Sexual Assault	6	6	0	100%
Sexual Assault on behalf of Minor	0	0	0	
Stalking	107	94	17	88%
Stalking on behalf of Minor	5	5	0	100%
Tort	40	53	60	133%
Total	921	1056	439	115%

Criminal Division	Incoming	Outgoing	Pending End of Year Active	Clearance Rate
Civil Miscellaneous	71	72	24	101%
Civil Suspension	60	111	44	185%
Felony	553	643	289	116%
Domestic Violence	79	105	28	133%
Drugs	73	81	33	111%
Elder Abuse	0	0	0	
Motor Vehicle-DWI/DUI	61	66	23	108%
Motor Vehicle-Other	30	40	12	133%
Other	10	12	1	120%
Person	109	124	101	114%
Property	152	171	74	113%
Protection Order Violation	10	8	3	80%
Public Order	28	36	13	129%
Weapons	1	0	1	
Fish and Game	56	63	4	113%
Judicial Bureau Appeal	4	9	4	225%
Miscellaneous (Criminal)	0	0	75	
Misdemeanor	1370	1641	552	120%
Domestic Violence	106	118	42	111%
Drugs	101	106	38	105%
Elder Abuse	0	0	0	
Motor Vehicle-DWI/DUI	229	279	78	122%
Motor Vehicle-Other	347	429	155	124%
Other	6	5	2	83%
Person	86	106	48	123%
Property	233	272	68	117%
Protection Order Violation	20	28	14	140%
Public Order	239	294	107	123%
Weapons	3	4	0	133%
Uniform Fire Prevention Ticket	0	0	0	
Total	2114	2539	992	120%
Investigative Requests	161	284	17	176%

Family Division	Incoming	Outgoing	Pending End of Year Active	Clearance Rate
Annulment	0	0	0	
Desertion	0	0	0	
Dissolution with Children	74	72	60	97%
Dissolution without Children	96	113	36	118%
Juvenile	158	134	83	85%
CHINS A- Abandoned or Abused	3	3	3	100%
CHINS B- Neglect	41	31	16	76%
CHINS C- Beyond Control	5	3	2	60%
CHINS D- Truant	10	5	8	50%
Delinquency	77	68	42	88%
Vulnerable Noncitizen Child	0	0	0	
Youthful Offender	22	24	12	109%
Mental Health	40	41	1	103%
Continued Treatment	2	3	0	150%
Involuntary Medication	0	0	0	
Involuntary Treatment	20	20	1	100%
Warrant for Emergency Exam	18	18	0	100%
Misc. Family	6	5	1	83%
Parentage	70	69	56	99%
Protection Order	267	264	43	99%
Extreme Risk Protection Order	1	1	0	100%
Registration of Foreign Abuse Prevention	1	1	0	100%
Relief from Abuse	229	225	18	98%
Relief from Abuse on behalf of a Minor	31	34	0	110%
Relief from Abuse/Neglect/Exploitation	5	3	0	60%
Registration of Foreign Order	3	4	0	133%
Separation	0	0	0	
UIFSA	8	11	8	138%
Total	722	713	263	99%

Probate Division	Incoming	Outgoing	Pending End of Year Active	Clearance Rate
Adoption	14	16	8	114%
Adult	3	5	0	167%
Conversion	0	0	0	
Minor- Agency	6	8	1	133%
Minor- Private	5	3	7	60%
Surrender & Relinquishment	0	0	0	
Estate	306	290	654	95%
Guardianship Adult	41	52	24	127%
Involuntary	36	40	20	111%
Voluntary	5	12	4	240%
Guardianship Minor	38	49	18	129%
Custodial	34	38	17	112%
Financial	4	10	0	250%
Permanent	0	1	1	
Vulnerable Noncitizen Child	0	0	0	
Misc. Probate	4	4	1	100%
Trust	5	5	23	100%
Total	408	416	728	102%
Administrative Matters	348	370	20	106%

APPENDIX IV: CASE TYPES AND DISPOSITION GROUPS

CIVIL

Division	Enterprise Justice Case Type	Case Type	Disposition Group
Civil	Administrative Document	Administrative	No Disposition Group
Civil	Appeal of Decision on Access to Court Records	Administrative	No Disposition Group
Civil	Collection - Credit Card	Contract	Collection
Civil	Collection - Non-Credit Card	Contract	Collection
Civil	Collection - Other	Contract	Collection
Civil	Contract - Buyer Plaintiff	Contract	Contract
Civil	Contract - Other	Contract	Contract
Civil	Employment - Discrimination	Contract	Employment
Civil	Employment - Other	Contract	Employment
Civil	Employment - Wrongful Termination	Contract	Employment
Civil	Foreclosure - Non-Residential	Contract	Foreclosure
Civil	Foreclosure - Residential	Contract	Foreclosure
Civil	Landlord/Tenant - Abandoned Property	Contract	Landlord/Tenant
Civil	Landlord/Tenant - Eviction	Contract	Landlord/Tenant
Civil	Landlord/Tenant - Other	Contract	Landlord/Tenant
Civil	Tort - Fraud	Contract	Contract
Civil	Add Name to Voter Checklist	Other Civil	Miscellaneous (Civil)
Civil	Appeal - Administrative Agency	Other Civil	Appeal (Civil Division)
Civil	Appeal - Municipal	Other Civil	Appeal (Civil Division)
Civil	Appeal - Other	Other Civil	Appeal (Civil Division)
Civil	Appeal - Probate	Other Civil	Appeal (Civil Division)
Civil	Appeal - Professional Licensing Board	Other Civil	Appeal (Civil Division)
Civil	Appeal - Property Tax	Other Civil	Appeal (Civil Division)
Civil	Appeal - Small Claims	Other Civil	Appeal (Civil Division)
Civil	Appeal - Worker's Compensation	Other Civil	Appeal (Civil Division)
Civil	Claim Against Gov. - Access to Records	Other Civil	Claim Against Government
Civil	Claim Against Gov. - Election	Other Civil	Claim Against Government
Civil	Claim Against Gov. - Open Meeting	Other Civil	Claim Against Government

Civil	Claim Against Gov. - Other	Other Civil	Claim Against Government
Civil	Claim Against Gov. - Rule 75 (Non-Prisoner)	Other Civil	Claim Against Government
Civil	Collection - Restitution Unit	Other Civil	Collection
Civil	Collection - Tax	Other Civil	Collection
Civil	Conversion Default Civil	Other Civil	Miscellaneous (Civil)
Civil	Declaratory Judgment	Other Civil	Declaratory Relief
Civil	Enforcement Action by Government	Other Civil	Miscellaneous (Civil)
Civil	Foreign Subpoena	Other Civil	Miscellaneous (Civil)
Civil	Miscellaneous - Discovery	Other Civil	Miscellaneous (Civil)
Civil	Miscellaneous - Grand Jury	Other Civil	Miscellaneous (Civil)
Civil	Miscellaneous - Lottery	Other Civil	Miscellaneous (Civil)
Civil	Miscellaneous - Minor Settlement	Other Civil	Miscellaneous (Civil)
Civil	Miscellaneous - Other	Other Civil	Miscellaneous (Civil)
Civil	Miscellaneous - Structured Settlement	Other Civil	Miscellaneous (Civil)
Civil	Miscellaneous - Wrongful Death Settlement	Other Civil	Tort
Civil	Permission to File Pursuant to 15 VSA Sec 1185	Other Civil	Miscellaneous (Civil)
Civil	Prisoner Case - Habeas Corpus	Other Civil	Prisoner
Civil	Prisoner Case - Other	Other Civil	Prisoner
Civil	Prisoner Case - Post Conviction Relief	Other Civil	Prisoner
Civil	Prisoner Case - Review of Governmental Action	Other Civil	Prisoner
Civil	Restricting Abusive Litigation Pursuant to 15 VSA Sec 1182	Other Civil	Miscellaneous (Civil)
Civil	Sexual Assault	Other Civil	Stalking
Civil	Sexual Assault on Behalf of Minor	Other Civil	Stalking
Civil	Stalking	Other Civil	Stalking
Civil	Stalking on Behalf of Minor	Other Civil	Stalking
Civil	Stalking/Sexual Assault for Conversion	Other Civil	Stalking
Civil	Eminent Domain	Real Property	Contract
Civil	Partition	Real Property	Real Property
Civil	Real Property	Real Property	Real Property
Civil	Small Claims \$1,000 or less	Small Claims	Small Claims
Civil	Small Claims \$1,000 or less	Small Claims	Small Claims
Civil	Small Claims \$1,001 to \$10,000	Small Claims	Small Claims
Civil	Small Claims \$1,001 to \$5000	Small Claims	Small Claims
Civil	Small Claims Credit Debt \$1,000 or less	Small Claims	Small Claims

Civil	Small Claims Credit Debt \$1,001 to \$5,000	Small Claims	Small Claims
Civil	Small Claims for Conversion	Small Claims	Small Claims
Civil	Small Claims Medical Debt \$1,000 or less	Small Claims	Small Claims
Civil	Small Claims Medical Debt \$1,001 to \$5,000	Small Claims	Small Claims
Civil	Tort - Automobile	Tort	Tort
Civil	Tort - Intentional Tort	Tort	Tort
Civil	Tort - Malpractice Medical	Tort	Tort
Civil	Tort - Malpractice Other	Tort	Tort
Civil	Tort - Negligence	Tort	Tort
Civil	Tort - Other	Tort	Tort
Civil	Tort - Personal Injury	Tort	Tort
Civil	Tort - Product Liability	Tort	Tort
Civil	Tort - Slander/Libel/Defamation	Tort	Tort

Criminal

Division	Enterprise Justice Case Type	Case Type	Disposition Group
Criminal	Administrative Document	Administrative	No Disposition Group
Criminal	Uniform Fire Prevention Ticket	Miscellaneous	Uniform Fire Prevention Ticket
Criminal	Other - Conversion	Miscellaneous	Miscellaneous (Criminal)
Criminal	Ordinance	Ordinance violation	Miscellaneous (Criminal)
Criminal	Misdemeanor	Misdemeanor	Misdemeanor
Criminal	Miscellaneous - Criminal	Miscellaneous	Miscellaneous (Criminal)
Criminal	Judicial Bureau Appeal	Appeal from Limited Jurisdiction Court	Judicial Bureau Appeal
Criminal	Investigative Request	Administrative	No Disposition Group
Criminal	Fish and Game	Miscellaneous	Fish and Game
Criminal	Felony	Felony	Felony
Criminal	Conversion Default Traffic Ticket	Miscellaneous	Miscellaneous (Criminal)
Criminal	Conversion Default Fish and Game	Miscellaneous	Fish and Game
Criminal	Conversion Default Criminal	Miscellaneous	Miscellaneous (Criminal)
Criminal	Conversion Default Civil Suspension	Miscellaneous	Civil Suspension
Criminal	Conversion Default Civil Miscellaneous	Miscellaneous	Civil Miscellaneous
Criminal	Civil Suspension	Miscellaneous	Civil Suspension
Criminal	Civil Miscellaneous	Miscellaneous	Civil Miscellaneous
Criminal	Appeal of Decision on Access to Court Records	Administrative	No Disposition Group

Family

Family	Administrative Document	Administrative	No Disposition Group
Family	Administrative Document - Family Division	Administrative	No Disposition Group
Family	Annulment	Domestic Relations-Other	Annulment
Family	Appeal of Decision on Access to Court Records	Administrative	No Disposition Group
Family	Appeal to Family Division from Probate Division	Other Civil	Miscellaneous (Family)
Family	CHINS A - Abandoned or Abused by Parent/Guardian/Custodian	CHINS	Juvenile
Family	CHINS B - Without Parental Care or Subsistence (Neglect)	CHINS	Juvenile
Family	CHINS C - Is Without or Beyond the Control of P/G/C	CHINS	Juvenile
Family	CHINS D - Habitually and Without Justification Truant	CHINS	Juvenile
Family	Civil Union Dissolution	Dissolution/Divorce	Dissolution without Children
Family	Civil Union Dissolution - Married Persons	Dissolution/Divorce	Dissolution without Children
Family	Conversion Default Family	Dissolution/Divorce	Miscellaneous (Family)
Family	Conversion Default Juvenile Cases	Juvenile - Other	Juvenile
Family	Conversion Domestic Cases	Administrative	No Disposition Group
Family	Conversion Mental Health	Other Civil	Mental Health
Family	Desertion	Domestic Relations-Other	Desertion
Family	Desertion Contested with Minor Children	Domestic Relations-Other	Desertion
Family	Desertion Contested with No Minor Children	Domestic Relations-Other	Desertion
Family	Desertion Stipulated with Minor Children	Domestic Relations-Other	Desertion
Family	Desertion Stipulated with No Minor Children	Domestic Relations-Other	Desertion
Family	Dissolution Civil Union Nonresident	Dissolution/Divorce	Dissolution without Children
Family	Dissolution Contested with Minor Children	Dissolution/Divorce	Dissolution with Children
Family	Dissolution Contested with No Minor Children	Dissolution/Divorce	Dissolution without Children
Family	Dissolution Stipulated with Minor Children	Dissolution/Divorce	Dissolution with Children
Family	Dissolution Stipulated with No Minor Children	Dissolution/Divorce	Dissolution without Children
Family	Divorce	Dissolution/Divorce	Dissolution without Children
Family	Extreme Risk Protection Order	Other Civil	Protection Order (Family)
Family	Generic Chins	CHINS	Juvenile
Family	Juvenile Delinquency	Delinquency	Juvenile
Family	JV - Appeal of Decision on Access to Court Records	Administrative	No Disposition Group

Family	MH - Appeal of Decision on Access to Court Records	Administrative	No Disposition Group
Family	MH-Act 248 Application for Judicial Review of Commitment	Other Civil	Miscellaneous (Family)
Family	MH-Application for Continued Treatment	Other Civil	Mental Health
Family	MH-Application for Involuntary Medication	Other Civil	Mental Health
Family	MH-Application for Involuntary Treatment	Other Civil	Mental Health
Family	MH-Guardianship for Developmentally Disabled Adult	Guardianship - Adult	Miscellaneous (Family)
Family	MH-Warrant for Emergency Exam	Other Civil	Mental Health
Family	Miscellaneous - Family	Domestic Relations-Other	Miscellaneous (Family)
Family	Miscellaneous - Juvenile	Juvenile - Other	Juvenile
Family	Parentage	Parentage	Parentage
Family	Parentage Contested	Parentage	Parentage
Family	Parentage Stipulated	Parentage	Parentage
Family	Permission to File Pursuant to 15 VSA Sec 1185	Domestic Relations-Other	Miscellaneous (Family)
Family	Registration of a Foreign Order	Domestic Relations-Other	Registration of a Foreign Order
Family	Registration of Foreign Abuse Prevention Order	Domestic Protection/Restraining Order	Protection Order (Family)
Family	Relief From Abuse	Domestic Protection/Restraining Order	Protection Order (Family)
Family	Relief from Abuse on Behalf of a Minor	Domestic Protection/Restraining Order	Protection Order (Family)
Family	Relief From Abuse/Neglect/Exploitation	Other Civil	Protection Order (Family)
Family	Restricting Abusive Litigation Pursuant to 15 VSA Sec 1182	Domestic Relations-Other	Miscellaneous (Family)
Family	Separation	Dissolution/Divorce	Separation
Family	Support	Domestic Relations-Other	Miscellaneous (Family)
Family	UIFSA	Domestic Relations-Other	UIFSA
Family	Vulnerable Noncitizen Child	CHINS	Juvenile
Family	Youthful Offender	Delinquency	Juvenile

Environmental

Environmental	Act 250 and ANR De Novo Appeals	Other Civil	Act 250 and ANR De Novo Appeals
Environmental	ANR & NRB Enforcement Actions	Other Civil	ANR & NRB Enforcement
Environmental	Civil Citation	Violation - other	Civil Citation
Environmental	Environmental Court Civil Case - Conversion	Other Civil	Miscellaneous (Environmental)
Environmental	Municipal De Novo Appeal	Other Civil	Municipal De Novo Appeal

Environmental Municipal Enforcement
 Environmental Municipal On the Record Appeal
 Environmental Other Jurisdiction

Other Civil
 Other Civil
 Other Civil

Municipal Enforcement
 On the Record Appeal
 Miscellaneous (Environmental)

Judicial Bureau

Division Enterprise Justice Case Type
 Judicial Bureau Fish and Wildlife
 Judicial Bureau Municipal Complaint
 Judicial Bureau Vermont Civil Violation

Case Type
 Violation-Other
 Ordinance violation
 Non-criminal traffic violation

Disposition Group
 Fish and Wildlife
 Municipal Complaint
 Vermont Civil Violation

APPENDIX V: DISPOSITIONAL GUIDELINES

Civil

Division	Disposition Group	Interim	Standard Guideline	Revised Standard Guideline	Complex Case Guideline	Revised Complex Case Guideline
Civil	Appeal (Civil Division)		180	180	365	365
Civil	Claim Against Government		365	365	540	540
Civil	Collection		120	180	180	300
Civil	Contract		365	540	540	540
Civil	Declaratory Relief		365	365	540	540
Civil	Employment		540	540	731	731
Civil	Foreclosure		450	605	731	910
Civil	Landlord/Tenant		180	180	270	270
Civil	Miscellaneous (Civil)		90	180	180	365
Civil	Prisoner		270	270	365	540
Civil	Real Property		365	540	540	731
Civil	Small Claims		120	180	180	270
Civil	Stalking		30	30	90	90
Civil	Tort		540	731	731	910

Criminal

Division	Disposition Group	Interim	Standard Guideline	Revised Standard Guideline	Complex Case Guideline	Revised Complex Case Guideline
Criminal	Civil Miscellaneous	Yes	90	90	0	0
Criminal	Civil Suspension	Yes	90	90	0	0
Criminal	Felony		180	365	365	545
Criminal	Fish and Game	Yes	90	90	0	0
Criminal	Judicial Bureau Appeal	Yes	60	60	0	0
Criminal	Miscellaneous (Criminal)	Yes	90	120	0	0
Criminal	Misdemeanor		120	180	180	270
Criminal	Uniform Fire Prevention Ticket	Yes	90	90	0	0

Family

Division	Disposition Group	Interim	Standard Guideline	Revised Standard Guideline	Complex Case Guideline	Revised Complex Case Guideline
Family	Annulment	Yes	270	270	540	540
Family	Desertion	Yes	270	270	540	540
Family	Dissolution with Children		270	365	540	731
Family	Dissolution without Children		270	365	540	731
Family	Juvenile		98	120	158	240
Family	Mental Health	Yes	30	30	0	0
Family	Miscellaneous (Family)	Yes	90	90	0	0
Family	Parentage		180	270	270	365
Family	Protection Order (Family)	Yes	14	14	0	0
Family	Registration of a Foreign Order	Yes	14	14	0	0
Family	Separation	Yes	270	270	540	540
Family	UIFSA	Yes	90	90	120	120

Probate

Division	Disposition Group	Interim	Standard Guideline	Revised Standard Guideline	Complex Case Guideline	Revised Complex Case Guideline
Probate	Adoption		90	90	270	365
Probate	Estate		365	540	540	731
Probate	Guardianship - Adult (Involuntary)		90	180	180	270
Probate	Guardianship - Adult (Voluntary)		30	60	90	180
Probate	Guardianship - Minor		90	150	180	270
Probate	Miscellaneous (Probate)	Yes	90	90	0	0
Probate	Trust		90	90	365	540

Environmental

Division	Disposition Group	Interim	Standard Guideline	Revised Standard Guideline	Complex Case Guideline	Revised Complex Case Guideline
Environmental	Act 250 and ANR De Novo Appeals		330	365	390	540
Environmental	ANR & NRB Enforcement		240	240	0	0
Environmental	Civil Citation	Yes	30	30	90	90
Environmental	Miscellaneous (Environmental)	Yes	90	90	0	0
Environmental	Municipal De Novo Appeal		300	300	365	480
Environmental	Municipal Enforcement		150	150	0	0
Environmental	On the Record Appeal		210	365	0	0

Judicial Bureau

Division	Disposition Group	Interim	Standard Guideline	Revised Standard Guideline	Complex Case Guideline	Revised Complex Case Guideline
Judicial Bureau	Fish and Wildlife		90	90	0	0
Judicial Bureau	Municipal Complaint		90	90	0	0
Judicial Bureau	Vermont Civil Violation		90	90	0	0